

Kangol Magnet Limited

(Registered Number 41174)

A member of the
Kangol Group of Companies
Manufacturers of
Seat Belts

Mr Todd A Clarke
22 N. Main Street
Doylestown
PA
18901
U.S.A.

Norfolk Street
Carlisle Cumbria CA2 5HX
telephone Carlisle 31711
std 0228
cables Safety Carlisle
telex Kangol G 64163

Our Ref: CAN/EC

19th November, 1979

Dear Mr Clarke,

Thank you for your letter dated 27th October 1979 enquiring as to whether we could supply seat belts to fit your MGA Car.

Unfortunately in this instance we are unable to be of assistance.

Whilst we have supplied belts as original equipment for this model when it was manufactured we no longer carry stocks. Furthermore, we regret we would in any case not be in a position to supply to the U.S.A. in the light of the heavy premium costs for product liability in the U.S.A.

We apologise that we cannot be more positive in our reply and wish you success in your endeavours in finding a possible alternative source of supply.

Yours faithfully,

C. A. WILSON
SERVICE EXPORTATION



Registered in England

Registered Office
Norfolk Street
Carlisle Cumbria CA2 5HX
telephone std 0228 31711
telex Kangol G 64163

Directors:
J. G. Ogg S. Measner
A. G. Tucker R. A. Ashworth
A. E. Pearson & Company Secretary
R. C. Atwood

SEAT BELT INFORMATION

Kangol's response to my interest in having seat belts manufactured... We believe Kangol "magnet belts" were available during late MGA production.

C.S.R. has since reproduced most of the brackets and hardware BMC supplied for proper seat belt mounting.



A new-old stock seat belt kit... Britax supplied BMC with belts and hardware for MGA applications. BMC specified harness style belts for all of their "sports" models. Basic lap belts were never recommended for "front" seat use.

INSTALLATION INSTRUCTIONS FOR M70a, M70b AND M70c MOUNT & HARDWARE KITS

to service MGA harness seat belts/typical BMC seat belt assemblies

IMPORTANT - PLEASE READ BEFORE INSTALLATION

A Note on MGA Seat Belts - Harness type seat belts were offered as optional equipment by the manufacturer BMC during MGA production years. Original belts were supplied in kits or came pre-installed (if ordered) as per later MGA production. For example, MK II's were fitted with the anchorage brackets. For more information on original seat belts see factory literature including section S and SS of the MGA Workshop Manual.

Clarke Spares & Restorations has reproduced the mounting hardware and brackets to accommodate both single point - one hole (as per typical seat belt end brackets) and double point - two holes (as per typical BMC tonneau/wheel arch seat belt end brackets). Most currently produced belts call for a 7/16" to 1/2" mounting bolt size....this size has become an industry standard. All bolts and nuts used in our kits are hardened and match the strength of fasteners used on new vehicle seat belt assemblies.

GENERAL INSTRUCTIONS - for the best and safest results please follow instructions. If you have any questions please feel free to contact us.

- 1) Welding is required to install brackets. An experienced welder will be able to install pieces without damage to panels, exterior paint finish, etc. An electric welding process should be used. Paint and rust will have to be removed from areas where brackets attach. See more specific instructions further on.
- 2) Inspect kit to be sure you have all brackets and hardware. See itemized listing below. If you are missing any of the pieces contact us immediately.
- 3) ITEMIZED LISTING - M70a Kit - ROADSTER - services two seats
 - 2 M70-01 QUICK RELEASE BRACKETS with hardware - (4 - 5/16-24 hex bolts, 4 - locking washers).
 - 2 M70-10 FRAME "U" BRACKETS - LH & RH.
 - 2 M70-02 CIRCULAR BRACKETS with hardware - (12 - 10-32 X 5/8" pan head machine screws, 12 - #10 locking washers, 12 - 10-32 hex nuts, 2 - 7/16-20 hex bolts, 2 - 7/16" locking washers, 2 - 7/16" flat washers, 2 - 7/16" hex nuts and 4 - 7/16" wave/tension washers).
 - 2 M70-08 TONNEAU BRACKET with hardware - (2 - 7/16" hex bolts, 2 - 7/16-20 hex nuts, 2 - 7/16" locking washers, 2 - 7/16" flat washers, 4 - 7/16" wave/tension washers, 2 - 10-32 hex bolts, 2 - 10-32 hex nuts, 2 - #10 locking washers, 4 - #10 flat washers, 4 - 5/16-24 hex bolts and 4 - 5/16" locking washers).
- 4) ITEMIZED LISTING - M70b Kit - Coupe' - services two seats

Includes 2 - M70-01, 2 - M70-10, 2 - M70-02 - see M70a listing for details.

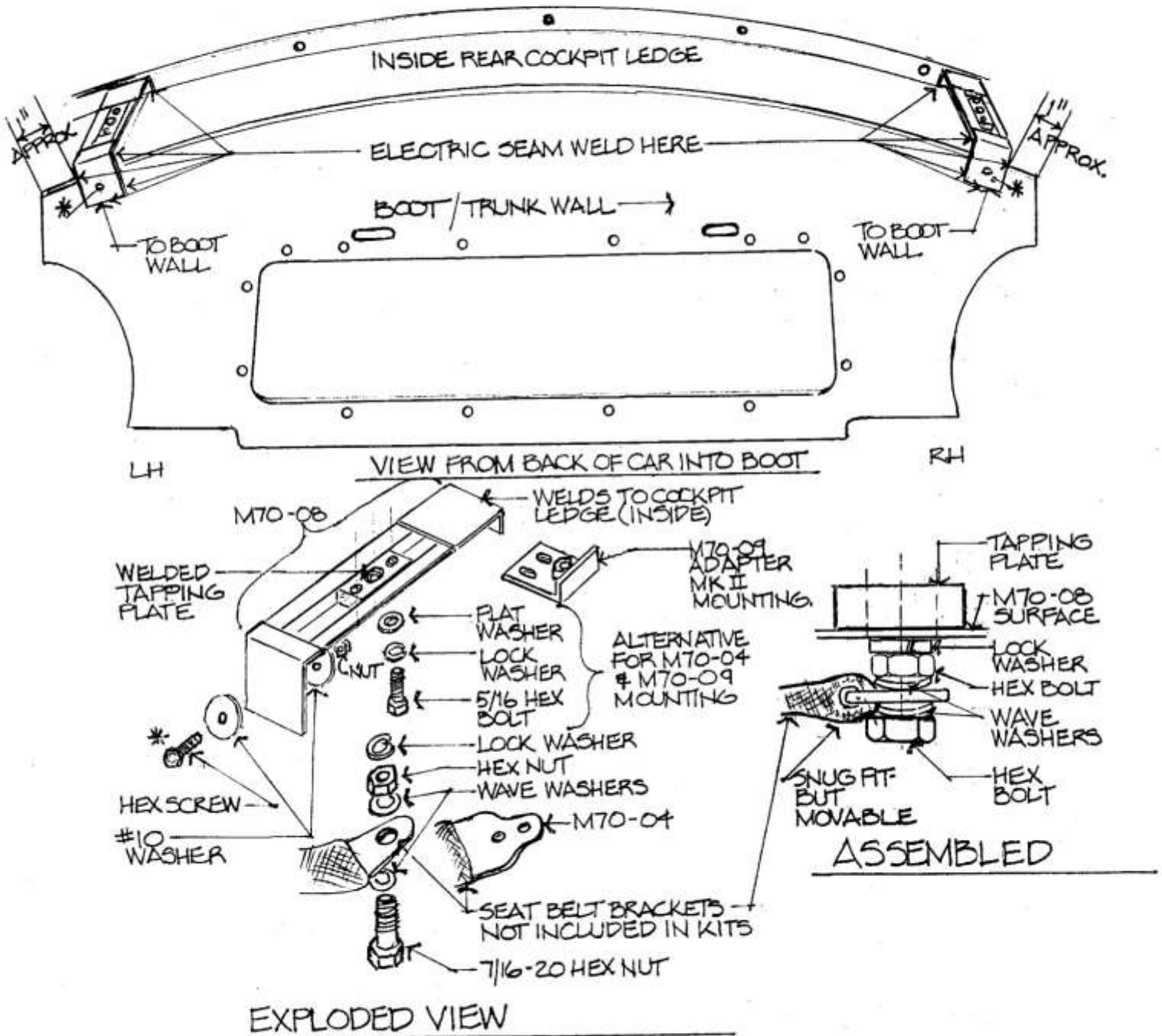
 - 2 M70-03 BOLT ASSEMBLY - (2 - 7/16-20 hex bolts, 4 - 7/16-20 hex nuts, 2 - 7/16" locking washers, 2 - 7/16" flat washers and 4 - 7/16" wave/tension washers).
- 5) ITEMIZED LISTING - M70c Kit - MK II Roadster & Coupe' with factory fitted anchorage brackets.

Includes 2 - M70-01 - see M70a listing for details.

 - 2 M70-09 ADAPTER BRACKET - (4 - 5/16" hex bolts, 4 - 5/16" locking washers, 4 - 5/16" flat washers, 2 - 7/16-20 hex bolts, 2 - 7/16" hex nuts, 2 - 7/16" locking washers, 2 - 7/16" flat washers, 4 - 7/16" wave/tension washers, 4 - 5/16" hex nuts).
 - 2 M70-03 See M70b listing for details.

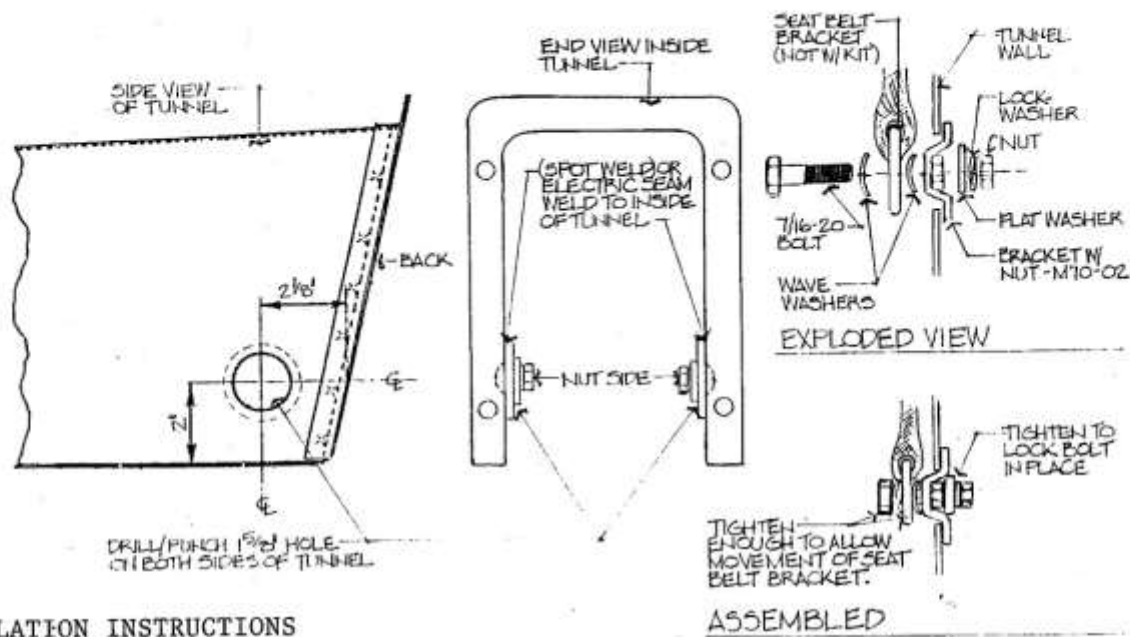
A - TONNEAU ANCHORAGE - Roadster Only

- 1) Locate and install brackets in position - see diagram. Electric-seam weld as per notations on diagram.
- 2) Prime and paint - avoid painting welded nut threads.
- 3) Install hardware as per diagram making sure bolt is not over tightened - seat belt bracket should fit snugly but be left loose enough so belt will swivel. Be sure bolt, lock washer, and nut are tight and locked in position.



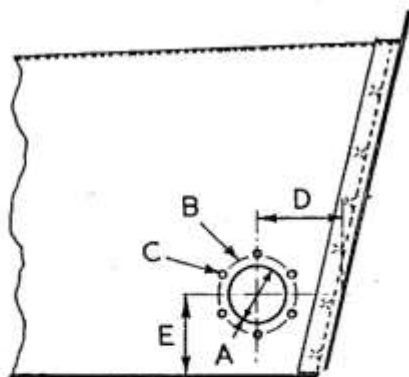
* BRACKET CAN ALSO BE ATTACHED AT THIS POINT W/ ENCLOSED #10 HEX HEAD SCREW, WASHERS AND NUTS. DRILL HOLE AFTER BRACKET IS POSITIONED W/ OTHER WELDS MADE.

B - TUNNEL ANCHORAGE - Roadster & Coupe

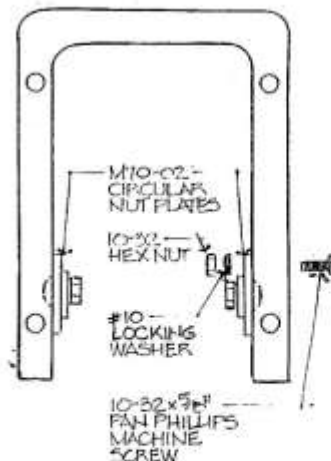


INSTALLATION INSTRUCTIONS

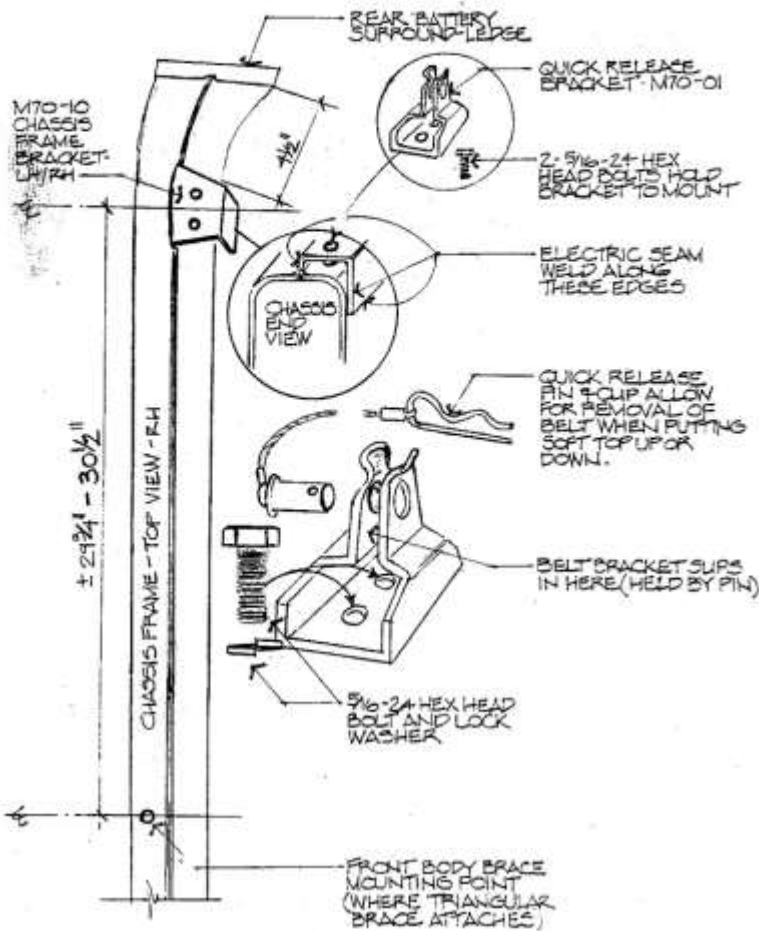
- 1) Remove carpet.
 - 2) Locate and drill/punch 1-1/2" holes as per diagram.
 - 3) Install circular bracket.
 By Weld: electric seam weld (or spot weld) in position.
 See diagram. Prime and paint - avoid painting threads.
 By Fasteners: use bracket as template and mark the six holes around perimeter on tunnel.
 Drill or punch holes to 13/64". See below diagram for proper positioning.
 Tighten - always use locking washers.
 - 4) Cut holes in carpet to coincide with positioned bracket. Install carpet.
 - 5) Install hardware as per diagram making sure bolt is not over tightened - seat belt bracket should fit snugly but be left loose enough so belt will swivel. Be sure bolt, locking washer, and nut are tight and locked in position.
- Note- The tunnel wall is prone to severe rusting and may have become 'thin' and weak over the years. It is recommended that a reinforcement plate be welded in position to insure the integrity of the mounting bracket. It is also recommended that alterations performed on the tunnel be done while it is off the car. A better perspective can be had of the extent of damage due to corrosion when the tunnel is 'in hand'.



| | |
|---|-----------------|
| A | 1.625" (1 5/8") |
| B | 2.125" (2 1/8") |
| C | .203" (13/64") |
| D | 2.125" (2 1/8") |
| E | 2.00" (2") |



C - FRAME ANCHORAGE - Roadster & Coupe



INSTRUCTIONS

- 1) Remove carpeting from area of frame where bracket will be welded.
 - 2) Locate and electric-seam weld bracket in position. See diagram.
 - 3) Prime and paint being careful to avoid painting threaded area of welded nuts.
 - 4) Position and bolt down 'quick' release bracket using the 5/16-24 Hex Hd. bolts and 5/16 locking washers - Tighten.
 - 5) Remove clip and pin, place seat belt end in bracket - install pin to hold belt - install hitch clip to hold pin.
 - 6) Clip-pin assembly will have to be removed when putting top up or down. Be sure clip-pin assembly is always installed properly - hitch clip is locked in position. (as per pre-assembled unit in this kit - examine before dismantling).
- Note- When installing carpeting always trim carpet to fit around bracket. Never place carpet between welded bracket and 'quick' release bracket.



INSTRUCTIONS

- 1) Remove carpeting from wheel arches.
- 2) Locate and drill/punch hole to accommodate 1/2" bolt. A 17/32" hole is ideal. See diagram.
- 3) Cut hole in carpet to match hole in arch - install carpet (carpet may be optional).
- 4) Install hardware as per diagram making sure bolt is not over tightened. Seat belt bracket should fit snugly but be left loose enough so belt will swivel. Be sure bolt, lock washer and nut are tight and locked in position.

D- WHEEL ARCH ANCHORAGE - Coupe' Only

