

CSR

Clarke Spares & Restorations

MGA Parts Catalogue

11th edition

Clarke Spares & Restorations

PO Box 1501

Doylestown, PA 18901

(215) 348-0595

Shop (215) 822-6411

FAX (215) 348-4160

clarkespares@att.net / www.clarkespares.com

ABOUT CLARKE SPARES & RESTORATIONS

The concept for Clarke Spares began when I initiated my first frame-up MGA restoration in 1976. While dismantling the '59 roadster, it became evident that there would be difficulties locating replacements for a number of parts and materials which, after 17 years of wear, were in need of renewal. Research began and, eventually, the production and marketing of many of these hard-to-find parts became a reality.

Presently, Clarke Spares offers over 400 reproduction spares with more being added continually. With the exception of supplies of used parts and a few new-old-stock parts which materialize from time to time, all parts are either specially built for or manufactured by Clarke Spares & Restorations. Chances are you will find many items in this catalogue which you never knew were on your "A" when it rolled out of Abingdon-on-Thames years ago.

Your comments and suggestions on this and future catalogues are welcome and appreciated. Thank you for your interest in my spares and restorations.

Todd A. Clarke

© 2010 Clarke Spares & Restorations
11th Edition Catalogue
First Electronic Printing, October 2010
First Printing, December 2010



CONTENTS

Particulars.....	3
MGA Specification.....	4
Mechanical Sundries: cooling, suspension, engine	5-6
Fuel and Exhaust System Sundries.....	7-8
Brake and Wheel Sundries.....	9-10
Electrical and Instrument Control Sundries.....	11-12
Inner Body Panels/Metal Stampings.....	13-14
Packings, Gaskets, and Seals: felt, rubber, cork, pvc, fibreboard components	15-16
Chassis Frame and Sundries.....	17-18
Interior, Top, Doors, Windows	19-21
Metal Loop Clips	22
Special Fittings and Sundries: information, seat belt hardware, tool sundries, ID plate stamping service, speaker mounting, misc. grommets.....	23-24
Grommets.....	25
Fasteners	26-34
About the Catalogue	35
MGA Trivia	36

Particulars *Clarke Spares & Restorations specializes in hard-to-find parts and information to service the complete MGA. If you do not see what you are looking for or you have specific questions or suggestions, please feel free to write or call. I endeavor to be as close to the original in the manufacture of reproduction spares. Steel pieces are supplied unprimed/unpainted unless otherwise specified. Be sure to include a phone/e-mail number along with your mailing address for post.*

Ordering Mail Orders: Please use Clarke Spares order form whenever possible. Order by phone, fax, email, post...
Phone Orders: (A phone machine may be in service when you call. Please leave your order & message; we will get back to you. Be sure to leave a phone number and please repeat it especially if you are calling from a cell phone.)

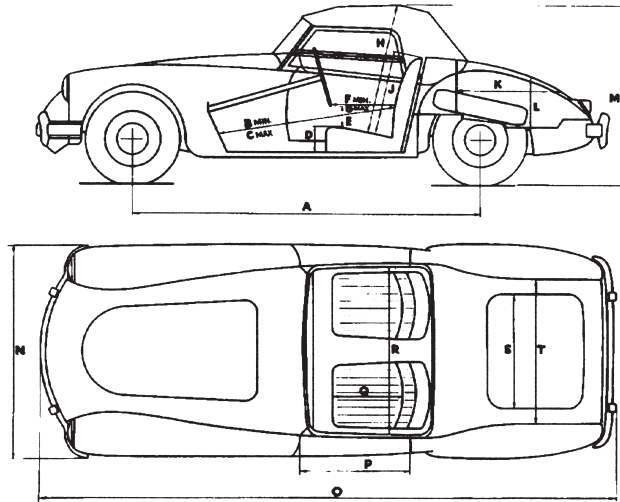
Payment Forward payment information by post, phone, fax or e-mail. Phone (voice mail) and Fax are secure. E-Mail: Many customers forward information in increments via three messages as a security measure. Be sure to include the exp. date of your VISA/MC. VISA/MC numbers are kept in paper file (not electronic) for a period of time and then eliminated. U.S. Customers—VISA/MC accepted or pay by check/money order made out to Clarke Spares & Restorations. Foreign Customers—VISA/MC accepted or pay via bank check in U.S. dollars. Mail all checks/M.O.s to P.O. Box 1501 Doylestown, Pa. 18901. No PayPal or C.O.D.s at this time.

Shipping See separate sheet for shipping rates. U.S. orders will be shipped in the most cost effective way. Be sure to note proper addresses for Post/UPS/FedX. Foreign Customers: parts will be shipped via US mail. If you want your order shipped by UPS/FedX please supply your customer number for collect shipping.

Backorders Please check appropriate box on order form. If an item is placed on B.O. it will be shipped to you immediately once fresh stock is available. You may cancel a backorder at any time and receive a full refund.

Returns If you are not satisfied with the quality of a part, please return it within 30 days of receipt for a full refund. Altered or damaged goods will not be accepted. If goods are damaged during shipping, contact the shipper immediately.

Prices See separate sheet. Parts not priced are not yet available, or are currently out of stock. Be sure you have an up-to-date price sheet.



A 94 in. 239 cm	B 44 in. 112 cm	C 48 in. 122 cm	D 7 in. 18 cm
E 6 in. 15 cm	F 13 in. 33 cm	G 16 in. 41 cm	H 37 in. 94 cm
J 21 in. 53 cm	K 30 in. 76 cm	L 14 in. 41 cm	M 50 in. 127 cm
N 57 1/4 in. 145 cm	O 156 in. 396 cm	P 29 in. 74 cm	Q 18 1/2 in. 47 cm
R 45 in. 114 cm	S 30 in. 76 cm	T 39 in. 99 cm	Weight 17 3/4 cwt 902 kg.

Track (front):	Disc wheels	...	47 1/2 in. (1.206 m.)
	Wire wheels	...	47 7/8 in. (1.216 m.)
Track (rear):	Disc wheels	...	48 3/4 in. (1.238 m.)
	Wire wheels	...	48 3/4 in. (1.238 m.)
Ground clearance	6 in. (15 cm.)

The M.G. Series MGA is a car that demands personal inspection. You must sit at the wheel..... handle the gears drive it. Only then will you appreciate how, through superb design, even the smallest part of this car adds its quota to total perfection.

The MGA has proved to be one of the most restorable British sports cars of the period. The body—frame separation provides the MGA enthusiast with a relatively easy restoration project. Parts—new and used are readily available. With the exception of just a few pcs. every part on the car has been reproduced. Over 100,000 MGAs were manufactured from 1955–1962. Eighty thousand units were shipped to North America. The number of MGAs that still exist remains a mystery...

SPECIFICATION

ENGINE : Four cylinders ; bore 73.025 mm (2.875 in.), stroke 89 mm. (3.5 in.), capacity 1489 c.c (90.88 cu. in.); o.h.v push rod operated ; three-bearing counterbalanced crankshaft ; compression ratio 8.3 to 1; 72 b.h.p. at 5,500 r.p.m.; cooling by water pump and fan with thermostatic control ; forced-feed engine lubrication by eccentric rotor pump ; external renewable element full-flow oil filter ; oil capacity 7 pints (4 liters); filler on valve cover ; aluminum alloy pistons with one scraper and three compression rings ; 14 mm. sparking plugs ; pressed-steel sump.

FUEL SYSTEM : Twin S.U. semi-downdraught carburetors with individual air cleaners ; rear-mounted S.U. electric high-duty fuel pump ; tank capacity 10 galls. (45 liters); fuel gauge on fascia.

ELECTRICAL EQUIPMENT : Ignition by 12-volt oil-filled coil and fully automatic distributor with vacuum and centrifugal advance control ; suppressor equipment ; belt-driven dynamo ; compensated voltage control ; single-pole positive earth wiring system ; dash-controlled starter switch ; twin-blade self-parking windshield wipers ; twin stop-tail lamps with flashing direction indicators and rear reflector equipment ; double dipping headlamps with pre-focused bulbs and block lenses ; foot-operated dipping switch ; separate sidelamps ; twin Lucas batteries mounted in balanced positions behind seats.

CHASSIS : Exceptionally sturdy box-section frame, specially braced for torsional rigidity ; rear end of chassis swept over rear axle.

TRANSMISSION : Hydraulically operated single dry plate Borg and Beck clutch ; 8 in. (20 cm.) diameter ; four speeds and reverse ; synchromesh on second, third and fourth. Overall gear ratios : first 15.652, second 9.520, third 5.908, top 4.3, reverse 20.468. Central remote-control gear change. Tubular propeller shaft with needle-bearing universal joints.

REAR AXLE : Three-quarter-floating rear axle with hypoid final reduction fears ; ratio 4.3 to 1.

SUSPENSION : semi-elliptic rear springs controlled by hydraulic dampers. Independent front suspension by coil springs and wishbone-type links controlled by hydraulic dampers.

STEERING : Direct rack-and-pinion steering with large-diameter spring-spoke clear-view steering wheel ; left- or right-hand steering according to market.

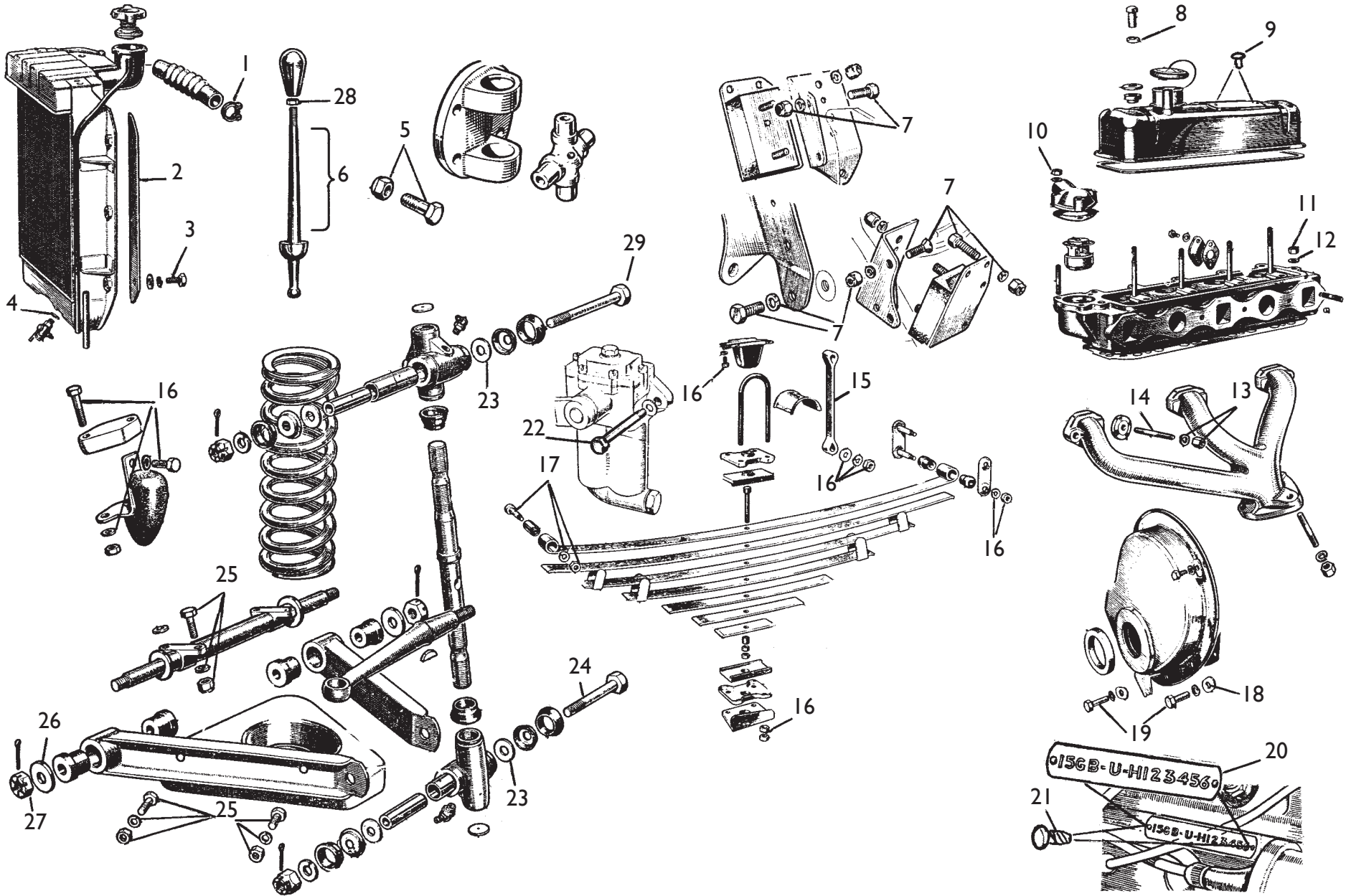
BRAKES : Lockheed hydraulic fully compensated on all four wheels ; 10 in. (25.4 cm.) diameter brake-drums ; central hand-brake lever with press-button ratchet control.

TYRES AND WHEELS : Dunlop 5.60—15 tyres on 4.00Jx15 well-base disc-type wheels with four-stud fixing.

INSTRUMENTS : Large speedometer with dead-beat reading and headlamp high-beam warning lamp ; large revolution indicator with ignition warning light ; oil pressure gauge ; water temperature gauge ; fuel indicator gauge ; ignition switch ; rheostat panel light switch ; mixture control ; map-reading light ; direction indicator switch and warning light ; lighting switch.

BODY DETAILS : Open two-seater streamlined body with enclosed luggage boot ; adjustable bucket-type seats, leather upholstery with leather-cloth on non-wearing parts ; door pockets ; safety glass windshield ; folding waterproof hood with large rear transparent panel ; two detachable side-screens with combined stowage and hood cover ; driving mirror centrally situated ; spare wheel, tools, jack and starting handle housed in rear boot ; quick-release petrol filler cap ; remote-control locks for bonnet and luggage boot lid ; one-piece bonnet hinged at rear, giving easy access to engine unit.

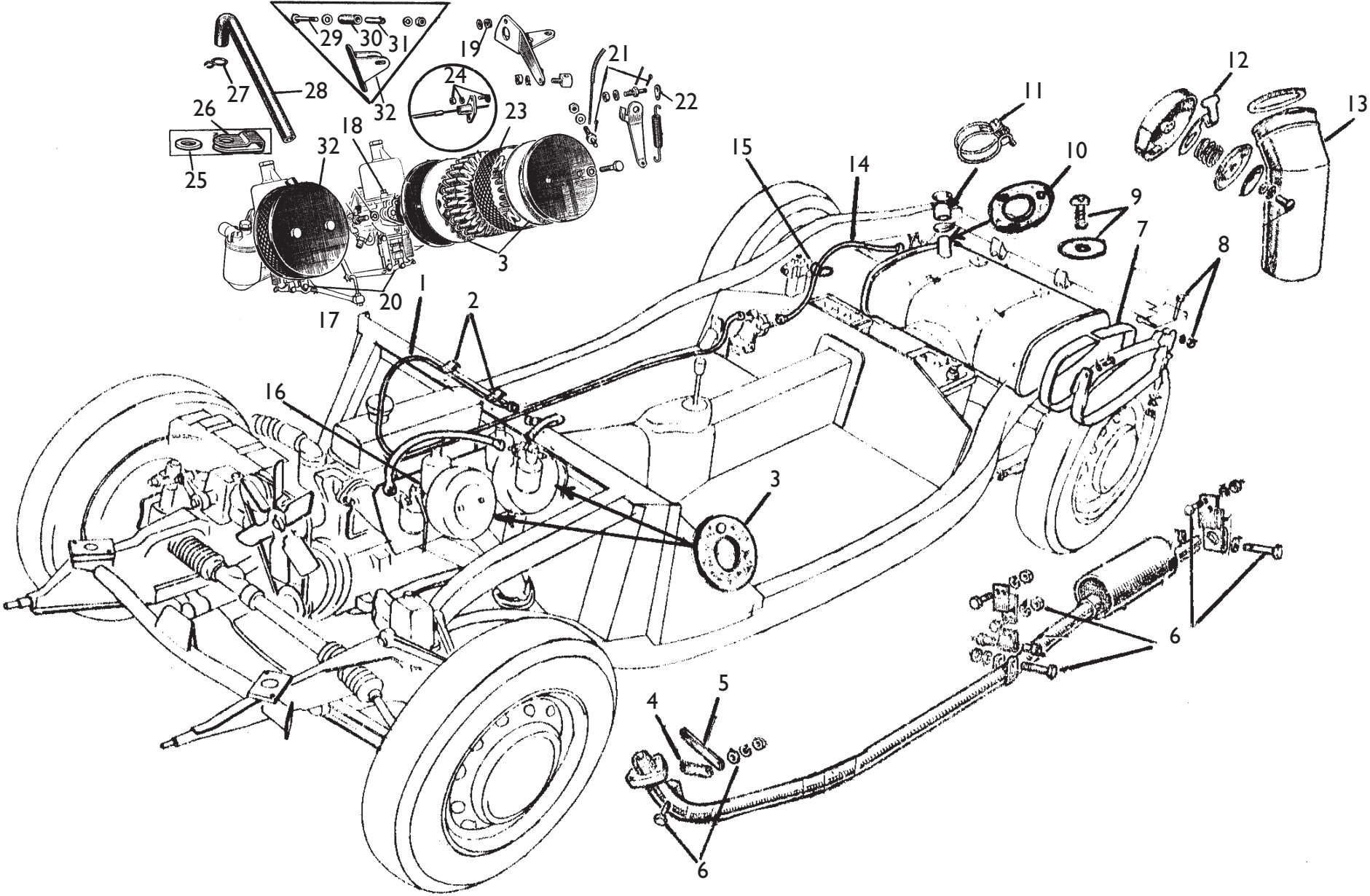
MECHANICAL SUNDRIES COOLING, SUSPENSION, ENGINE



MECHANICAL SUNDRIES—COOLING, SUSPENSION, ENGINE

Ill. #	Part #	Description	Qty. per veh.	<input type="checkbox"/>
1	F34b	WIRE STYLE HOSE CLAMP —radiator hoses	6	<input type="checkbox"/>
2	PI	PACKING/SHIM—radiator to body—supplied in pairs	1	<input type="checkbox"/>
3	F100	FASTENER KIT—radiator to body—18 pc. kit	1	<input type="checkbox"/>
4	P30	FIBRE SEAL/WASHER—drain tap to radiator	1	<input type="checkbox"/>
5	F115	FASTENER KIT—propeller shaft—12 pc. kit	1/2	<input type="checkbox"/>
6	RS-6	RECHROMED GEAR SHIFT LEVER—exchange—see rebuilding service listing	1	<input type="checkbox"/>
7	F98	FASTENER—engine mounting—44 pc. kit	1	<input type="checkbox"/>
8	F55	SPACER—valve cover “bolts”	2	<input type="checkbox"/>
9	F91	RIVET—valve cover information plates	4	<input type="checkbox"/>
10	F103	FASTENER KIT—nuts & washers, therm cover to studs.9 pc. kit	1	<input type="checkbox"/>
11	F54	HEX NUT—hardened, long style—cylinder head to block	11	<input type="checkbox"/>
12	F107	HARDENED WASHER—cylinder head	11	<input type="checkbox"/>
13	F67b	HEX NUT—hardened, long style—manifold to head	6	<input type="checkbox"/>
14	F52	STUD KIT—includes 6 studs plus 6 F67b nuts and washers	1	<input type="checkbox"/>
15	P31	REBOUND STRAP—rubber on reinforced webbing	2	<input type="checkbox"/>
16	F111	FASTENER KIT—services leaf springs, rebound straps and susp. bumpers (F96 bolts not included)—60 pc. kit	1	<input type="checkbox"/>
17	F96	BOLT,WASHER & NUT—front of rear leaf spring	2	<input type="checkbox"/>
18	M61	OBLONG WASHER KIT—timing chain cover to engine.9 pc. kit	1	<input type="checkbox"/>
19	F121	FASTENER KIT—hex hd. bolts and lock washers—18 pcs.	1	<input type="checkbox"/>
20	RS-12	ENGINE NUMBER PLATE—stamped to order—see rebuilding service listing	1	<input type="checkbox"/>
21	F76	RIVET—engine plate to block—supplied in pairs	1	<input type="checkbox"/>
22	F110	FASTENER KIT—for mounting rear dampers to chassis.20 pc. kit	1	<input type="checkbox"/>
23	F87	THRUST WASHER—hardened	8	<input type="checkbox"/>
24	F88	HEX BOLT—lower susp. link	2	<input type="checkbox"/>
25	F86	FASTENER KIT—services susp. wishbone assemblies—66 pc. kit includes F86a, F86b	1	<input type="checkbox"/>
26	F86a	WASHER—also applicable to MG-TD/TF/B	4	<input type="checkbox"/>
27	F86b	SLOTTED HEX NUT—pivot arms	4	<input type="checkbox"/>
	F119	SLOTTED HEX NUT—tie rod ends	2	<input type="checkbox"/>
28	F67a	CHROMED NUT—shift lever	1	<input type="checkbox"/>
29	F89	HEX BOLT-upper susp. link	2	<input type="checkbox"/>
	F113	FASTENER KIT—water pump to block—8 pc. kit	1	<input type="checkbox"/>
	FS014	LARGE O.D. INTERNAL STAR TOOTH LOCK WASHER— for sump to eng. block	13	<input type="checkbox"/>
	M37-48	CLIP—VENT PIPE TO ENG. SIDE	1	<input type="checkbox"/>
	FS005	HEX SCREW—sump to eng. block available in steel and stainless steel	13	<input type="checkbox"/>

FUEL & EXHAUST SYSTEM SUNDRIES



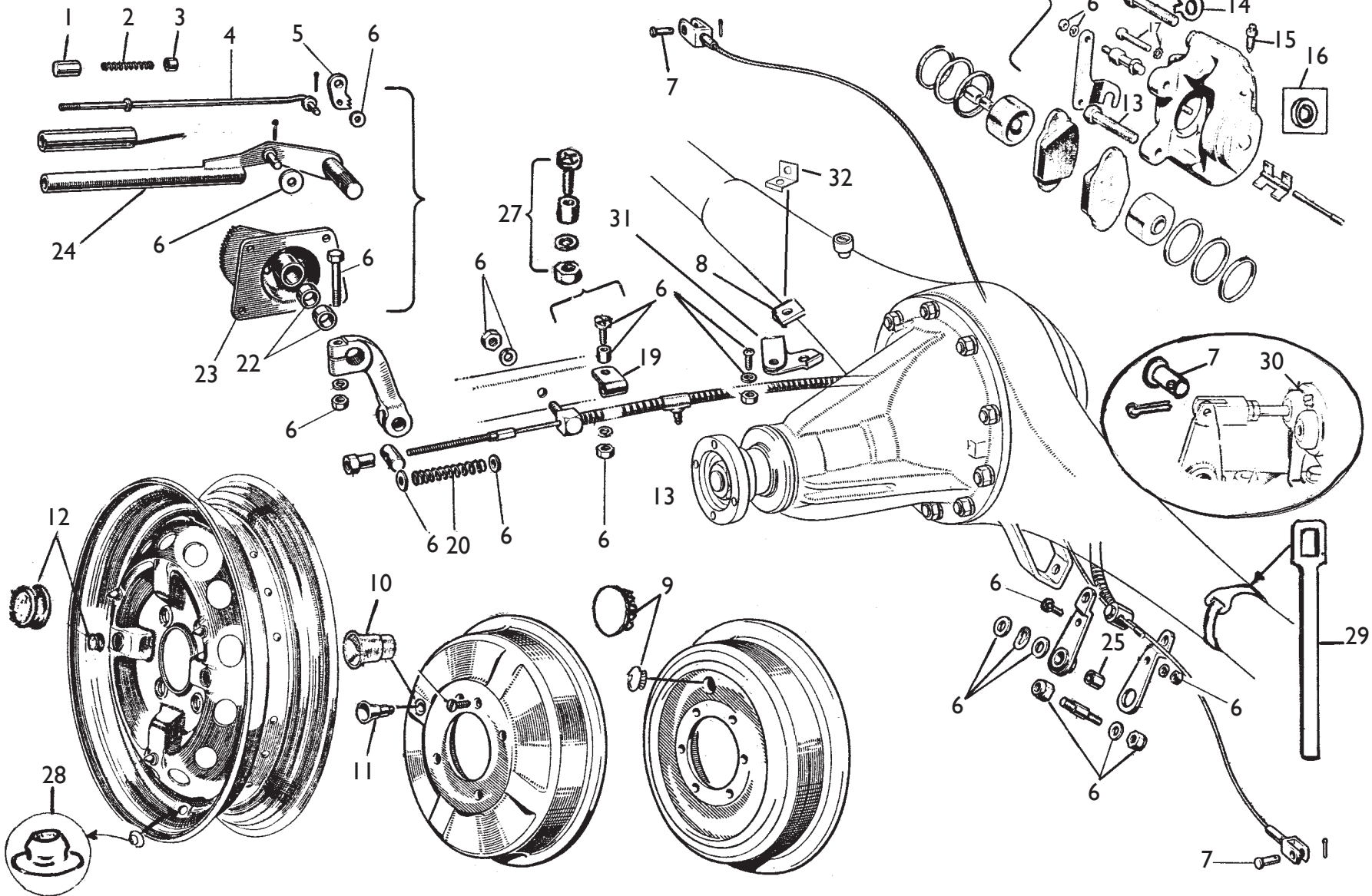
FUEL & EXHAUST SYSTEM SUNDRIES

Ill. #	Part #	Description	Qty. per veh.	<input type="checkbox"/>
1	M52	FUEL PIPE1—carb. to pump, for standard push-rod (also available for twin-cam—ask)	1	<input type="checkbox"/>
2	M37-14	CLIP2—fuel pipe to bulkhead	2	<input type="checkbox"/>
3	P15	FELT SEALS—carb. air cleaners—4 pc. kit	1	<input type="checkbox"/>
4	M22	STRAP, SHORT—exhaust pipe to eng. plate	1	<input type="checkbox"/>
5	M21	STRAP, LONG—ditto	1	<input type="checkbox"/>
6	F99	FASTENER KIT—to service exhaust mounting hangers—33 pc.	1	<input type="checkbox"/>
7	P24	PACKING RUBBER—straps to tank	1	<input type="checkbox"/>
8	F95	FASTENER KIT—24 pc. kit for mounting petrol tank & hanging straps to chassis	1	<input type="checkbox"/>
9	F5f	FASTENER KIT—9 pc. kit for securing petrol filler neck gasket retainer to boot floor	1	<input type="checkbox"/>
10	P9	SEAL, RUBBER—petrol pipe to boot floor	1	<input type="checkbox"/>
11	F34c	WIRE STYLE CLAMP—hose to pipes—2 pc. set	1	<input type="checkbox"/>
12	M24	“LIFT” LEVER—for petrol cap	1	<input type="checkbox"/>
13	RS1	PIPE REPLATING SERVICE—send us your original pipe extension unit along with cap unit and we will rebuild it—see rebuilding service listing		<input type="checkbox"/>
14	M51	FUEL PIPE1—pump to tank	1	<input type="checkbox"/>
15	M37-02	CLIP2—fuel pipe to damper bolt	1	<input type="checkbox"/>
16	F104	FASTENER KIT—all nuts and washers for mounting carbs. and cable bracket to intake manifold—13 pc. kit	1	<input type="checkbox"/>
17	M23	HEAT SHIELD—carb plated with pads riveted in position	1	<input type="checkbox"/>
18	F78	FASTENER KIT—dashpot covers to body—12 pc. kit	1	<input type="checkbox"/>
19	F83a	DOUBLE COIL SPRING WASHER—3/16” size—acts as spring tensioner for misc carb. and bonnet/boot lid release assys.	9	<input type="checkbox"/>
	F83b	DOUBLE COIL SPRING WASHER—choke cam—side of forward carb.	1	<input type="checkbox"/>
	F83	DOUBLE COIL WASHER KIT—10 pcs.	1	<input type="checkbox"/>
20	F85	PUSH-ON NUTS—for misc. carb. fittings (F85a—large, F85b—small)	A/R	<input type="checkbox"/>
21	F29	BRASS COTTER PIN KIT—carb. fittings—10 pcs.	1	<input type="checkbox"/>
22	M79	TOGGLE BRACKET—throttle return spring	1	<input type="checkbox"/>
23	RS20	SCREEN REPLATING SERVICE—satin silver finish—services two screens. See rebuilding service listing		<input type="checkbox"/>
24	F5n	FASTENER KIT—accelerator guide plate to firewall panel 6 pc kit (included in F93 kit)	1	<input type="checkbox"/>
25	F123	WASHER DISTANCE Pc—clip to engine	1	<input type="checkbox"/>
26	M37-03	BRASS CLIP—two overflow pipes to engine	1	<input type="checkbox"/>
27	M53	SPRING CLIP—hose to valve cover and air cleaner	2	<input type="checkbox"/>
28	P28	RUBBER HOSE—breather	1	<input type="checkbox"/>
29	F124	SCREW—with washers and nut—accelerator pedal stops—top and bottom	2	<input type="checkbox"/>
30	P29	RUBBER “STOP”—accelerator pedal stops top and bottom	2	<input type="checkbox"/>
31	F125	DISTANCE TUBE—accelerator pedal stops	2	<input type="checkbox"/>
32	M155	PEDAL STOP-BRACKET	1	<input type="checkbox"/>

1 fuel pipes are produced from fully annealed stainless steel with brass fittings silver soldered in position. The finish of the stainless steel resembles original steel pipes.

2 see M37 Clip listing for complete line of metal clips. These clips are included in M37 kit

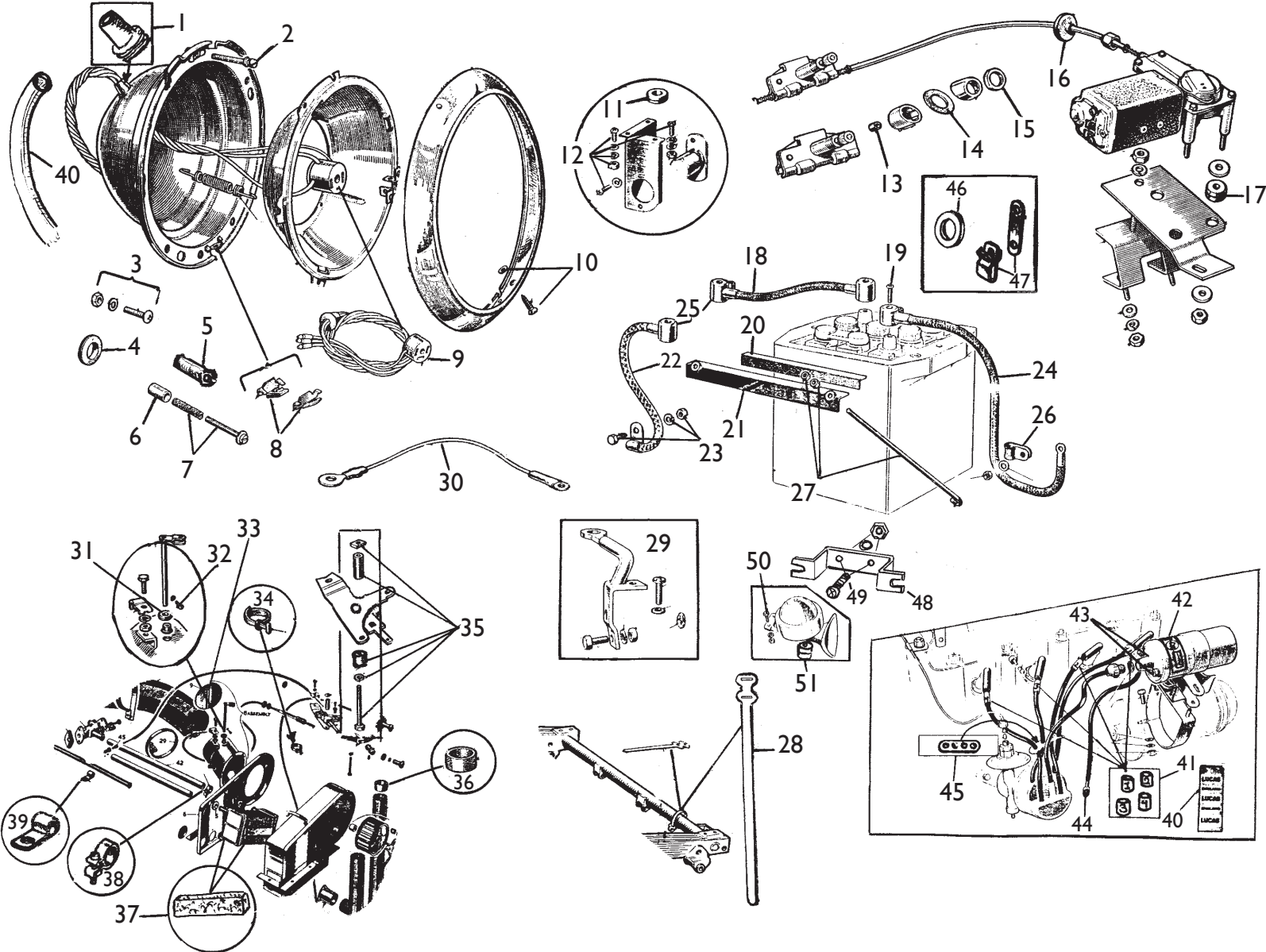
BRAKE & WHEEL SUNDRIES



BRAKE & WHEEL SUNDRIES

Ill. #	Part #	Description	Qty. per veh.	<input type="checkbox"/>
1	M102-03	KNOB—chromed brass	1	<input type="checkbox"/>
2	M102-02	SPRING—inside handle	1	<input type="checkbox"/>
3	M102-07	BUSH—spring plate rod guide	1	<input type="checkbox"/>
4	M102-04	PAWL ROD	1	<input type="checkbox"/>
5	M102-08	PAWL	1	<input type="checkbox"/>
6	M102-05	SUNDRY KIT—special kit includes M102-01, M102-02, F56a, plus all hardware required to service/attach handbrake handle and cable—42 pc. kit incl. diagram	1	<input type="checkbox"/>
7	F94	CLEVIS PIN—with bearing washer and cotter pin	4	<input type="checkbox"/>
8	M123	BRACKET—for mounting brake pipe junction pcs.(welds to housing)	1	<input type="checkbox"/>
9	M104-01	METAL PLUG—1/2" wire wheel brake drum adjustment hole	A/R	<input type="checkbox"/>
9	M104-02	METAL PLUG—3/4" —ditto	A/R	<input type="checkbox"/>
10	P61-02	DUST SEAL FERRULE—3/4" pressed/solid wheel, positions in drum between drum and wheel	A/R	<input type="checkbox"/>
11	P61-01	DUST SEAL FERRULE—1/2" ditto	A/R	<input type="checkbox"/>
12	P57	RUBBER PLUG—pressed/solid wheel, brake adjustment hole	10/5	<input type="checkbox"/>
13	F117	HEX BOLT—I600 calipers	4	<input type="checkbox"/>
14	M126	LOCK TAB—for F117 bolts	4	<input type="checkbox"/>
15		BLEEDER—all models	4/6	<input type="checkbox"/>
16	M122	SPACER SET—for I600 disc brake dust shields—8 pcs.	1	<input type="checkbox"/>
17	F118	HEX BOLT SET—includes all bolts required to hold caliper halves together plus washers and nuts needed to secure calipers to front end. Does not include M126 lock tabs—20 pc. kit	1	<input type="checkbox"/>
19	M37-19	CLIP—cable to RH battery rack—see M37 clip listing pg. 23	1	<input type="checkbox"/>
20	M102-01	SPRING—cable tension	1	<input type="checkbox"/>
21	RS-3	HANDBRAKE REBUILDING SERVICE—see rebuilding service listing	1	<input type="checkbox"/>
22	M102-09	BUSHING SET—ratchet housing	1	<input type="checkbox"/>
23		RATCHET HOUSING ASSEMBLY	1	<input type="checkbox"/>
24		HANDLE—rechromed, exchange—see RS3	1	<input type="checkbox"/>
25	M102-10	BUSHING—swivel bracket	1	<input type="checkbox"/>
26	M102-06	PLASTIC GRIP—black, pressed onto handle	1	<input type="checkbox"/>
27	F56a	SCREW, SPACER, WASHER, & NUT ASSEMBLY—attaches brake pipe and cable clips to RH battery rack	1	<input type="checkbox"/>
28	P53	PLASTIC FERRULE—tube stems to wheel—nest in 5/8" hole	A/R	<input type="checkbox"/>
29	M39	STRAP—brake pipe to rear housing, also applicable to MG-T series cars and MGB	1	<input type="checkbox"/>
30	F24	FASTENER KIT—master cyl. cover plates to body—14 pc. kit	1	<input type="checkbox"/>
31	M156	BRACKET/CLIP—cable to rear housing tab	1	<input type="checkbox"/>
32	M157	BRACKET—for attachment of later style 3 way brass junction	1	<input type="checkbox"/>

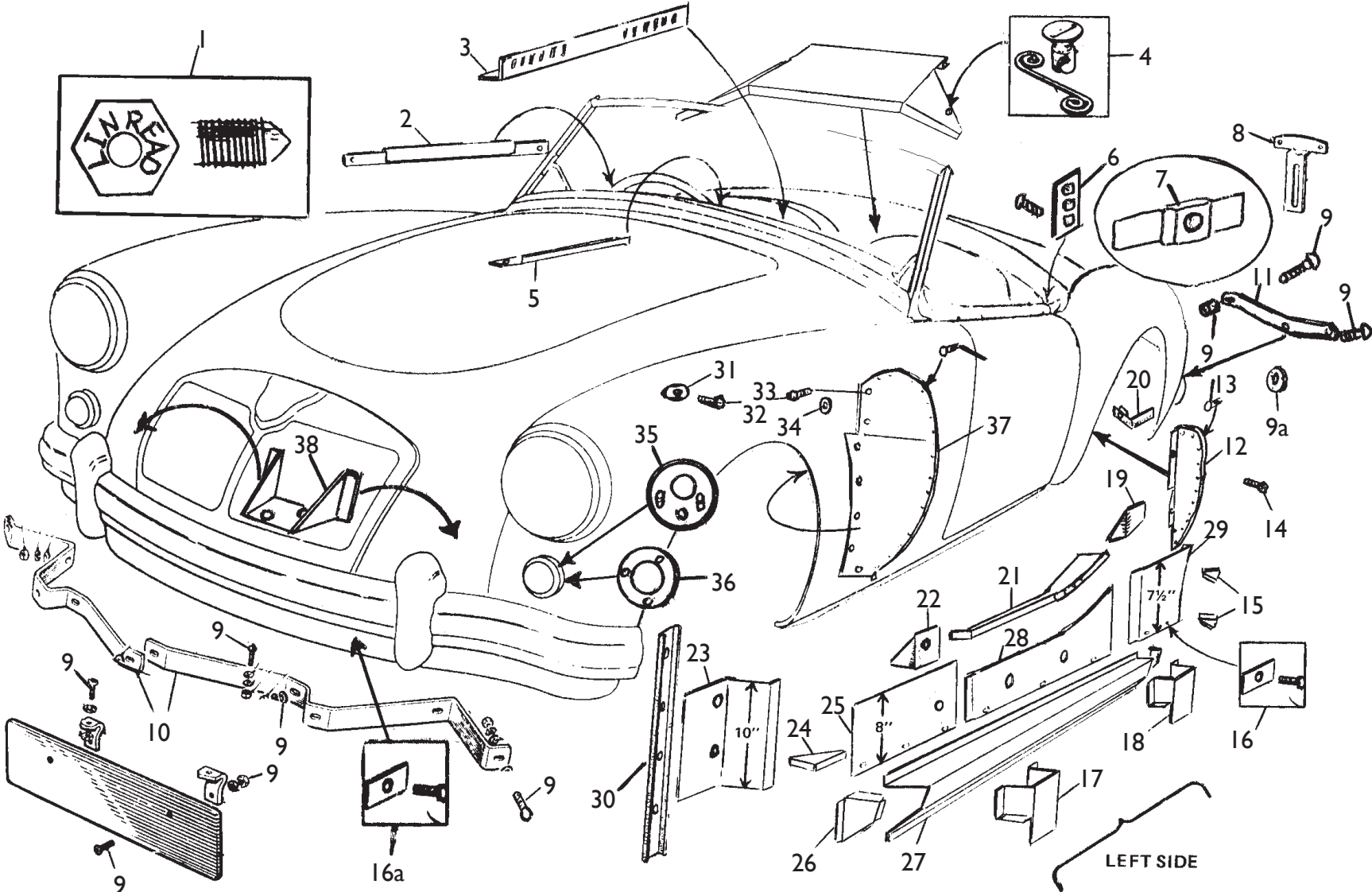
ELECTRICAL & INSTRUMENT CONTROL SUNDRIES



ELECTRICAL & INSTRUMENT CONTROL SUNDRIES

Ill. #	Part #	Description	Qty. per veh.	<input type="checkbox"/>
1	G21	GROMMET/SLEEVE—lamp wiring to bucket—Included in G2 kit	2	<input type="checkbox"/>
2	F40	TRIMMER SCREW—“1600” lamp bucket with two screws	4	<input type="checkbox"/>
3	F5b	FASTENER KIT—headlamp buckets to fenders—24 pcs—services two buckets	1	<input type="checkbox"/>
4	G5	GROMMET—radiator bulkhead area—included in G2 kit	3	<input type="checkbox"/>
5	F39c	SVAGE NUT—for 1500 lamp bucket trimmer screws—can also be used on later buckets	6	<input type="checkbox"/>
6	P58	CAP—seal for swedge nut/trimmer screw	6/4	<input type="checkbox"/>
7	F39	TRIMMER SCREW & SPRING—early headlamp adjustment—12 pc. kit services one vehicle	1	<input type="checkbox"/>
8	F42a	BRACKET—for rim fastening	2	<input type="checkbox"/>
9	E4	SOCKET & WIRING ASSEMBLY—sealed beam	2	<input type="checkbox"/>
10	F42	CHROMED SCREW AND RUBBER RETAINER—4 pc. kit	1	<input type="checkbox"/>
11	G12	GROMMET—high beam switch wiring to shelf—included in G1 kit	1	<input type="checkbox"/>
12		FASTENERS—to service switch and bracket—included in F93 kit	1	<input type="checkbox"/>
13	P72	RUBBER SEAL—wiper wheel box spindles—for 1/4” shafts	2	<input type="checkbox"/>
14	P10	RUBBER SEAL SET—for wheel box covers—2pc. set	1	<input type="checkbox"/>
15	R54	CHROMED NUT—rechroming serviceoriginal brass nuts only—exchange. See rebuilding listing	2	<input type="checkbox"/>
16	G15	GROMMET—wiper drive cable pipe—included in G1 kit	1	<input type="checkbox"/>
17	G3	GROMMET/BUFFER—wiper motor mounting—3 pc. kit	1	<input type="checkbox"/>
18	E7b	CABLE—between batteries	1	<input type="checkbox"/>
19	F49	SCREW—terminal to battery—4 pc. kit	1	<input type="checkbox"/>
20	P22	PAD—clamp to battery—2 pc. set	1	<input type="checkbox"/>
21	M15	CLAMP/BRACKET—battery hold- down	2	<input type="checkbox"/>
22	E7c	CABLE—ground	1	<input type="checkbox"/>
23		FASTENERS—for E7c—5/16” hex bolt, lock washer and nut. See fastener listing	1	<input type="checkbox"/>
24	E7a	CABLE—starter switch to battery	1	<input type="checkbox"/>
25	E7	LUCAS STYLE TERMINAL/END—for battery cables—2 pos. & 2 neg.	4	<input type="checkbox"/>
26	M37-11	CLIP—E7a cable to floorboard rail screw—underside	1	<input type="checkbox"/>
27	M16	“J” BOLT SET—with nuts—services two batteries	1	<input type="checkbox"/>
28	M62	METAL STRAP—wiring harness to frame (9” long)—also used for horn harness when dual horns are fitted	2/4	<input type="checkbox"/>
29	M46	DRIVING LAMP BRACKET—with fasteners—chromed brass LH/RH	2	<input type="checkbox"/>
30	E2	CABLE—ground fuel pump to chassis	2	<input type="checkbox"/>
31	G23	GROMMET—flap pivot shaft—later heater boxes	2	<input type="checkbox"/>
32	F108	SCREW—flap pivot shaft	2	<input type="checkbox"/>
33	P67	RUBBER SEAL—heater box flap—inside 4” tube	1	<input type="checkbox"/>
34	P42	RUBBER CLIP—fastens misc. cables—4 pc. kit	1	<input type="checkbox"/>
35	F105	SCREW, SPACER & WASHER KIT—heater control switch and panel to fascia—10 pc. kit	1	<input type="checkbox"/>
36	P60	RUBBER ADAPTER—defroster hose to vent—2 pc. kit	1	<input type="checkbox"/>
37	P62	FELT KIT—service heater core to box	1	<input type="checkbox"/>
38	F34a	CLAMP SET—band style—6 pc. set	1	<input type="checkbox"/>
39	M37-04	CLIP—heater pipe to intake manifold	2	<input type="checkbox"/>
40	E9	LUCAS LABEL—for wiring harness—wraps around harness near control box	1	<input type="checkbox"/>
41	E11	ID SLEEVE SET—for spark plug cables, BMC 4 cyl—4 pc. kit	1	<input type="checkbox"/>
	E12	DITTO—BMC 6 cyl—6 pc. kit	1	<input type="checkbox"/>
42	E8	LUCAS LABEL—for coil	1	<input type="checkbox"/>
43	F116	BRASS HEX NUT—10-32 thread—5/16” face on hex—on distributor and coil	3	<input type="checkbox"/>
44	E3	CABLE—coil to distributor	1	<input type="checkbox"/>
45	E10	SEPARATOR—for spark plug cables	1	<input type="checkbox"/>
46	P59	LEATHER SEAL—pipe to gauge, oil pressure	1	<input type="checkbox"/>
47	M11	BRACKET & CLIP ASSY—holds water temp. sensor pipe to side of engine head/bottom water valve bolt—com.(c)49148	1	<input type="checkbox"/>
48	M75	BRACKET—horn button	1	<input type="checkbox"/>
49	F126	FASTENER KIT—screws with washers and nuts, horn button to bracket. 6 pc. kit—included in F93 kit	1	<input type="checkbox"/>
50	F106	FASTENER KIT—services front extension and horn mounting—66 pc. kit	1	<input type="checkbox"/>
51	G22	GROMMET—horn cover to body—included in G2 kit	1	<input type="checkbox"/>
	F112	FASTENER KIT—generator mounting—17 pc. kit	1	<input type="checkbox"/>

INNER BODY PANELS & OTHER METAL STAMPINGS



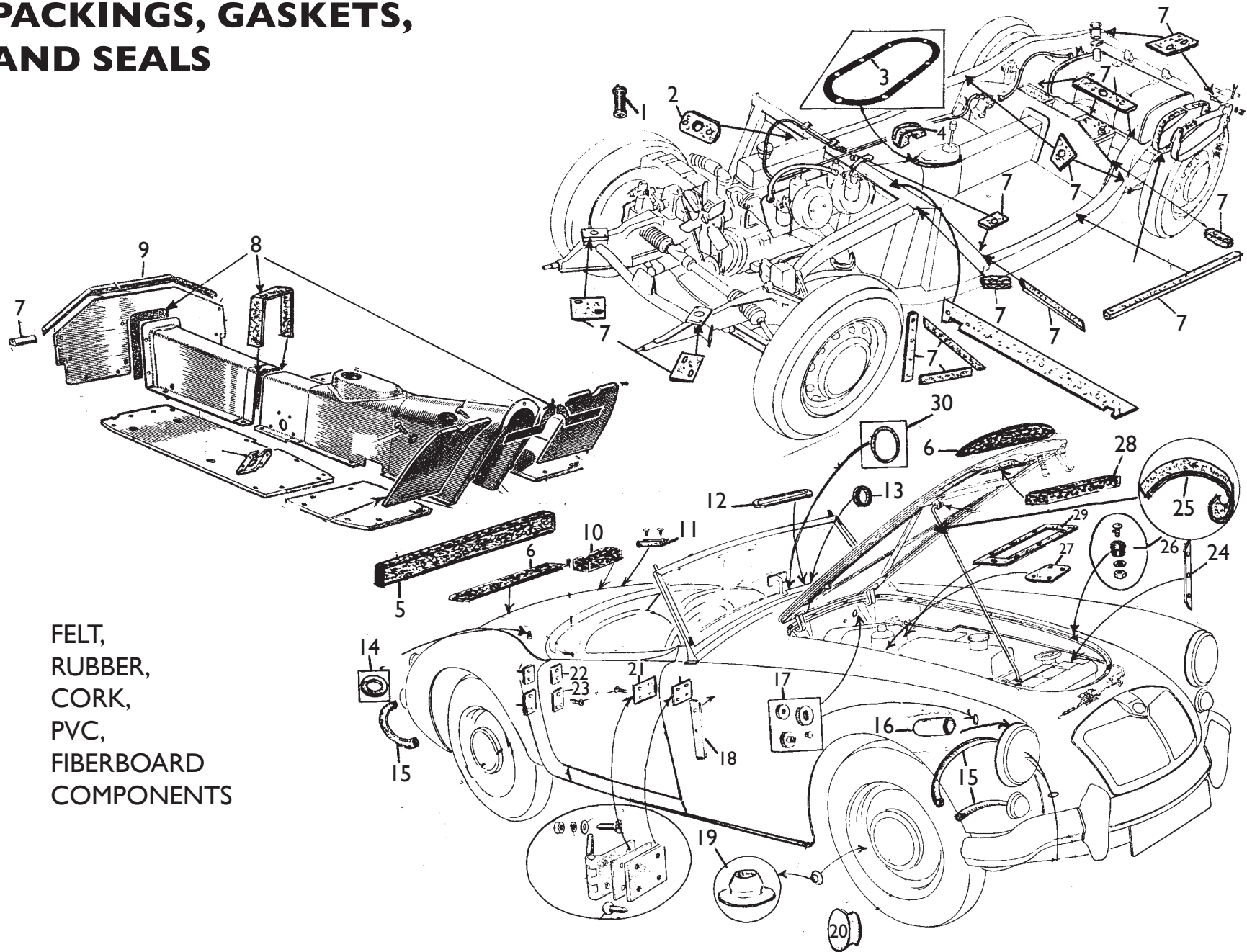
INNER BODY PANELS & OTHER METAL STAMPINGS

Ill. #	Part #	Description	Qty. per veh.	
1	F72	HEX HEAD BODY BOLTS—w/cone point—various lengths (see fastener listing F69b for more information)	A/R	<input type="checkbox"/>
2	M14	STIFFENER—interior door panel, Roadster	2	<input type="checkbox"/>
3	M48	SLIDE RAIL—seat to floor	4	<input type="checkbox"/>
4	*	DZUS FASTENER KIT—4 pcs. battery cover to body	1	<input type="checkbox"/>
5	M18	STIFFENER—facia panel to body—2 LH & 2 RH	4	<input type="checkbox"/>
6	M20	NUT PLATE—repair panel with fasteners—conv. top frame to body sides	2	<input type="checkbox"/>
7	M35	NUT RETAINER—with square nut—10-32 size	40	<input type="checkbox"/>
7	M35a	DITTO—1/4-28 size	24	<input type="checkbox"/>
7	M35b	DITTO—5/16-24 size	A/R	<input type="checkbox"/>
	M12	“T” BRACKET—license lamp	1	<input type="checkbox"/>
9	F35	BUMPER FASTENERS—kits and misc. pcs. (see fastener listing page for more information) F35 kit —100 pcs.		<input type="checkbox"/>
9a	P13	RUBBER AND FIBRE WASHER KIT—rear license bracket	1	<input type="checkbox"/>
10	*	BRACE—front bumper	2	<input type="checkbox"/>
11	*	BRACE—rear bumper	2	<input type="checkbox"/>
12	*	SPLASH PANEL—forward of rear wheel—LH & RH	2	<input type="checkbox"/>
13	F21	SPLIT RIVET KIT—rubber seals to splash plates	1	<input type="checkbox"/>
14	F19	FASTENER KIT—for M13 splash panels—20 pcs.	1	<input type="checkbox"/>
15	*	BRACE SET—for rear pillar (striker post)—4 pc. kit services both sides of the car	1	<input type="checkbox"/>
16	F6a	FASTENER KIT—bottom of fenders to body—38 pcs.	1	<input type="checkbox"/>
16a	F6b	DITTO—front apron to fenders and body—42 pcs.	1	<input type="checkbox"/>
17	*	REPAIR PLATE—front pillar	2	<input type="checkbox"/>
18	*	DITTO—rear pillar	2	<input type="checkbox"/>
19	M57	MOUNT—body to frame, rear—LH/RH	2	<input type="checkbox"/>
20	M55	NUT BRACE—rear fender to splash plate, welds to fender	2	<input type="checkbox"/>
21	M3	SILL SEALING PLATE—LH/RH	2	<input type="checkbox"/>
22	M5	MOUNT—body to frame, front	2	<input type="checkbox"/>
23	M44	REPAIR PLATE—front corner of inner body—LH/RH	2	<input type="checkbox"/>
24	M36	BRACE STIFFENER—LH/RH—included with M4	2	<input type="checkbox"/>
25	M4	REPAIR PLATE—front of inner body—cage nuts and fasteners for attachment of front fender bottoms are included as are M36 braces—LH/RH	2	<input type="checkbox"/>
26	*	END CAP SET—for M8 inner rockers—4pcs., not included with M8s, services 1 pr. of M8s	1	<input type="checkbox"/>
27	*	INNER “ROCKER” PANEL—LH/RH	2	<input type="checkbox"/>
28	M2	INNER SILL PANEL—backing for inner and outer “rockers”—LH/RH	1	<input type="checkbox"/>
29	M1	REPAIR PLATE—rear of inner body, cage nuts and fasteners included for attachment of rear fender bottoms—LH/RH	2	<input type="checkbox"/>
30	M45	CHANNEL STIFFENER—welds to body sides	2	<input type="checkbox"/>
31	M54	FENDER WASHER—oblong shape	42	<input type="checkbox"/>
32	F72	HEX HEAD BODY BOLTS—with cone point, see fastener listings for more information		<input type="checkbox"/>
33	F70	HEX HEAD BOLT—with locking washer fastener kit. See F62 for flat washers, services one pair of splash plates—24 pcs.	1	<input type="checkbox"/>
34	F62	FLAT WASHER—1/4”x3/4” O.D—typical 1/4” body washer	A/R	<input type="checkbox"/>
35	M128	DISHED PLATE—for “1600” front lamp base attachment welds to inside of front fender	2	<input type="checkbox"/>
36	M69	TAPPING RING—for “1500” front lamp base attachment welds to inside of front fender	2	<input type="checkbox"/>
37	*	SPLASH PANEL—front fender—LH/RH	2	<input type="checkbox"/>
38	M125	MOUNT—LH/RH—body to front extension	2	<input type="checkbox"/>
	F109	FASTENER KIT—rear bumper mounting braces to chassis—14 pc. kit	1	<input type="checkbox"/>
	F114	FASTENER KIT—toeboard support/firewall panel and plates to chassis—39 pc. kit	1	<input type="checkbox"/>
	F106	FASTENER KIT—chassis extension to chassis and horn brackets—66 pc. kit	1	<input type="checkbox"/>

Discounts apply to “package” purchases of metal panels. State your needs and price will be quoted.

* parts shown for reference only

PACKINGS, GASKETS, AND SEALS

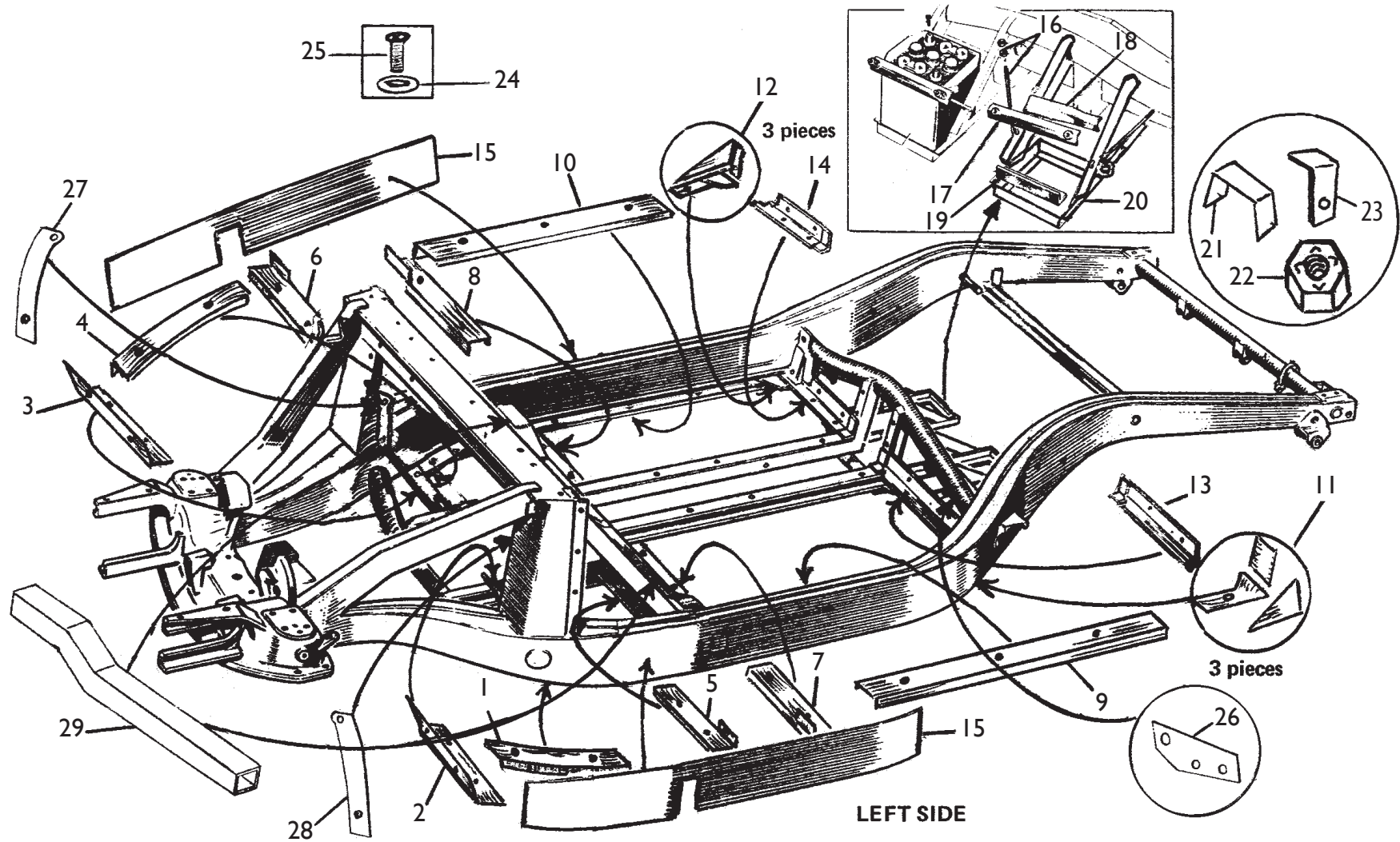


FELT,
RUBBER,
CORK,
PVC,
FIBERBOARD
COMPONENTS

PACKINGS, GASKETS, & SEALS

Ill. #	Part #	Description	Qty. per veh.	<input type="checkbox"/>
1	P50	RUBBER BUFFER/SLEEVE—speedo. cable to firewall plate/toeboard screw	1	<input type="checkbox"/>
2	P12	BLANKING RUBBER & SEAL—steering shaft	2	<input type="checkbox"/>
3	P25	SEAL—gearbox tower cover to tunnel	1	<input type="checkbox"/>
4	P56	RUBBER BUFFER—tunnel to frame	2	<input type="checkbox"/>
5	P55	FELT SEAL—back, inside boot floor to body	1	<input type="checkbox"/>
6	P17/18	FELT PAD SET—bonnet and boot lid wood battens to aluminum—2 pc. kit	1	<input type="checkbox"/>
7	P26	PACKING KIT—body to frame—26 pc. kit	1	<input type="checkbox"/>
8	P27	FELT KIT—toeboards and drive tunnel—approx. 15' of black felt stripping, installation diagram included	1	<input type="checkbox"/>
9	P46	RUBBER SEAL—battery cover to wood	1	<input type="checkbox"/>
10	P20	FELT PADS—spare tire to boot floor—2 pc. kit	1	<input type="checkbox"/>
11	P38	FELT CHANNEL—with screws—boot lid release rod	1	<input type="checkbox"/>
12	P16	FELT SEALS—defroster adapters to body, underside.2 pc. kit	1	<input type="checkbox"/>
13	P49	RUBBER WASHER/SEAL—map lamp to fascia	1	<input type="checkbox"/>
14	P52	FIBRE WASHER—chromed studs to body—protects paint—sold in lots of 10 (not original)	A/R	<input type="checkbox"/>
15	P39	PVC TUBING—kit includes enough tubing to service front and rear lamp wiring—black, non-shrink type	1	<input type="checkbox"/>
16	P58	CAP—for headlamp adjusting screw “nut”	6/4	<input type="checkbox"/>
17	G1	GROMMET KIT—heater box shelf area—33 pc. kit, location diagram included	1	<input type="checkbox"/>
17	G2	GROMMET KIT—wiring harness other than heater box shelf area 9 pc. kit (3 rad. bulkhead, 1 horn, 2 headlamp bucket, 2 rear fender, 1 license lamp harness)	1	<input type="checkbox"/>
17	G3	GROMMET KIT—wiper motor mount—3 pc. kit	1	<input type="checkbox"/>
17	G4	GROMMET KIT—heater box—5 pc. kit	1	<input type="checkbox"/>
17	G5	GROMMET—roadster door pocket	2	<input type="checkbox"/>
17	G6	COMPLETE GROMMET KIT—includes G1 through G5—52 pcs.	1	<input type="checkbox"/>
18	P7	PACKING/SHIM—front fender to body—2 pc. kit	1	<input type="checkbox"/>
19	P53	FERRULE—tire tube stem to rim—5 pc. kit	1	<input type="checkbox"/>
20	P57	PLUG—for pressed/solid wheels brake adj. holes	10/5	<input type="checkbox"/>
21	P4	PAD/SHIM—door hinge—approx. 1/8” thick	A/R	<input type="checkbox"/>
22	P5	PAD/SHIM—roadster striker—approx. 1/8” thick	A/R	<input type="checkbox"/>
23	P6	PAD/SHIM—coupé striker—approx. 1/8” thick	A/R	<input type="checkbox"/>
24	P1	PACKING—radiator to body—2 pc. kit	1	<input type="checkbox"/>
25	P71	FELT PACKING MATERIAL—for MGA body components, positions between inner stiffeners and “skin”. 1/4” thick X1 1/4” wide. Black spongy material will crush as original. Typical door uses 4 1/2’—sold by the foot	A/R	<input type="checkbox"/>
26	P36	BUFFER—bonnet to body—40 pc. kit includes fasteners	1	<input type="checkbox"/>
27	P11	BLANKING RUBBER—heater box shelf, pushrod cars	1	<input type="checkbox"/>
28	P19	FELT SEAL—bonnet to radiator—glues to bonnet directly over radiator	1	<input type="checkbox"/>
29	P8	RUBBER SEAL—heater box to shelf	1	<input type="checkbox"/>
30	P48	RUBBER RING SET—for gauges, rim to gauge and gauge to instrument panel (fascia)—16 pc. kit services 4 gauges	1	<input type="checkbox"/>
	P82	RUBBER SEAL—boot lid to body. Proper fit and durometer insures an easy shut and open	1	<input type="checkbox"/>

CHASSIS FRAME & SUNDRIES



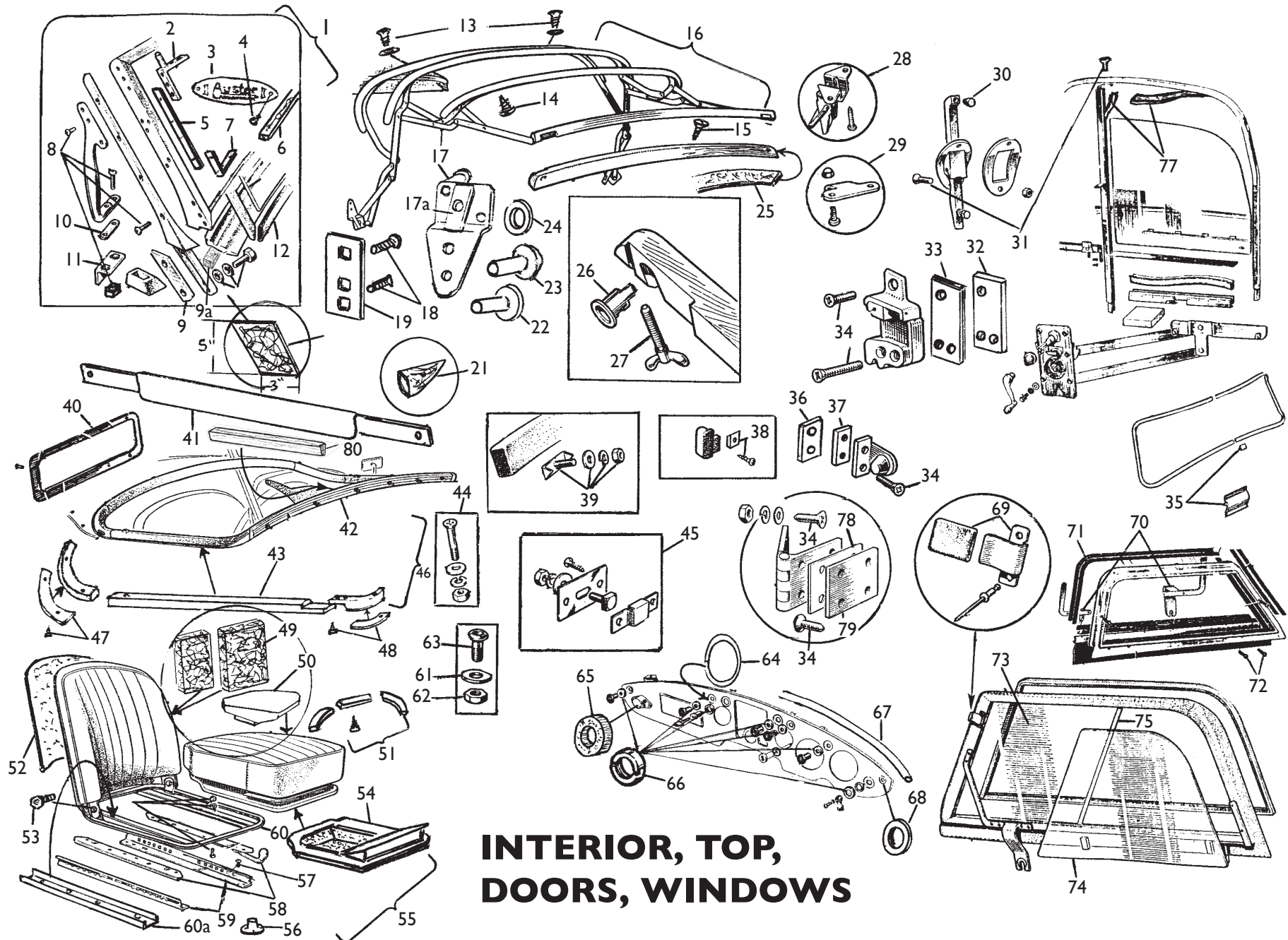
CHASSIS FRAME & SUNDRIES

Ill. #	Part #	Description	Qty. per veh.	<input type="checkbox"/>
1	CF1	CHANNEL—left of front floorboard. LH	1	<input type="checkbox"/>
2	CF2	CHANNEL—front of front floorboard. LH	1	<input type="checkbox"/>
3	CF3	DITTO—RH	1	<input type="checkbox"/>
4	CF4*	CHANNEL—right of front floorboard. RH	1	<input type="checkbox"/>
5	CF5	CHANNEL—rear of front floorboard. LH	1	<input type="checkbox"/>
6	CF6	DITTO—RH	1	<input type="checkbox"/>
7	CF11	CHANNEL—front of main floorboard. LH	1	<input type="checkbox"/>
8	CF12	DITTO—RH	1	<input type="checkbox"/>
9	CF13	CHANNEL—left of main floorboard. LH	1	<input type="checkbox"/>
10	CF14*	CHANNEL—right of main floorboard. RH	1	<input type="checkbox"/>
11	CF15	CHANNEL & REPAIR SECTIONS—rear corner, main floorboard. LH	1	<input type="checkbox"/>
12	CF16*	DITTO—RH	1	<input type="checkbox"/>
13	CF17	CHANNEL—rear of main floorboard. LH	1	<input type="checkbox"/>
14	CF18	DITTO—RH	1	<input type="checkbox"/>
15	CF19/20	REPAIR PLATE—weld over relative area inside and outside of frame	4	<input type="checkbox"/>
16	M16	“J” BOLT SET WITH NUTS—services two racks	1	<input type="checkbox"/>
17	M15	BRACE—to hold down battery	2	<input type="checkbox"/>
18	P22	PAD—for M15 brace—2pc. kit	1	<input type="checkbox"/>
19	P21	“L” PAD—battery to rack—4 pc. kit	1	<input type="checkbox"/>
20	M17	RACK—for batteries—LH & RH	2	<input type="checkbox"/>
21	M27	CLIP—hydraulic pipes to frame	10	<input type="checkbox"/>
22	M26	CLIP—wiring harness to frame	6	<input type="checkbox"/>
23	F10	WELD NUT—for floorboard channels (all channels includes weld nuts)	66/67	<input type="checkbox"/>
24	F16	COUNTERSINKING WASHER—for floorboards	66/67	<input type="checkbox"/>
25	F15	SCREW FOR FLOORBOARDS—1” & 1 1/4” lengths		<input type="checkbox"/>
	F15/16	SCREW & WASHER KIT—floorboards to frame. 134 pc. kit	1	<input type="checkbox"/>
26	M124	BRACKET—for attaching intermediate exhaust bracket and ground strap	1	<input type="checkbox"/>
27	CF7	CHANNEL—right upright toeboard RH	1	<input type="checkbox"/>
28	CF8	CHANNEL—left upright toeboard LH	1	<input type="checkbox"/>
29	CF21	BOX CROSSMEMBER—between front and rear floorboards, 24” long 2 pcs. will span chassis—LH or RH	2	<input type="checkbox"/>
	CF100	Kit includes 16 pcs—CF1 through CF18 plus one each CF19/20 (Note: CF7 & CF8 not included)	1	<input type="checkbox"/>

*M26 & M27 clips are welded to these channels

F10 weld nuts are attached to all CF channels

Where applicable, please specify LH or RH when ordering



**INTERIOR, TOP,
DOORS, WINDOWS**

INTERIOR, TOP, DOORS, WINDOWS

Ill #	Part #	Description	Qty. per veh.	
2	M64	PEG BRACKET WITH POST—chromed (LH/RH)	2	<input type="checkbox"/>
3	M71	AUSTER PLATE	1	<input type="checkbox"/>
4	F77	RIVET—Auster plate to frame	2	<input type="checkbox"/>
5	M28	TAPPING BAR	2	<input type="checkbox"/>
6	P37	WOOD BUFFER—inside center, bottom frame channel	1	<input type="checkbox"/>
7	M29	CORNER TAPPING BAR	2	<input type="checkbox"/>
8	F12	FASTENER KIT—all pcs. required to hold frame together and fasten it to body. 74 pc. kit	1	<input type="checkbox"/>
9	P2	PAD SET—stanchions to body—2 pc. kit	1	<input type="checkbox"/>
9a	P14	RUBBER SEAL SET—6" long draught seals—2 pc. set	1	<input type="checkbox"/>
10	P3	PAD SET—grab handle to body	1	<input type="checkbox"/>
11	M103	BRACKET—reinforcement/cage nut holder—grab handles—rivets to body	2	<input type="checkbox"/>
12	P23	GLAZING RUBBER—glass to frame	1	<input type="checkbox"/>
13	F3	FASTENER KIT—top to rear bow—4 pc. kit	1	<input type="checkbox"/>
14	F2-01	SCREW—bows to frame side	12	<input type="checkbox"/>
	F2-02	DITTO—oversize for stripped holes, same head size	A/R	<input type="checkbox"/>
15	F1	FASTENER KIT—wood bow to frame—10 pc. kit	1	<input type="checkbox"/>
17	M127	BRACKET—convertible top frame and hardtop attachment complete with spacer and rivet/washer (LH/RH)	2	<input type="checkbox"/>
17a	M127-01	BRACE—welds to M127 bracket—these are known to break off	2	<input type="checkbox"/>
18	F9	FASTENER KIT—top frame sides to body—8 pcs.	1	<input type="checkbox"/>
19	M20	NUT PLATE—REPAIR—with cage nuts and screws—top frame sides to body	2	<input type="checkbox"/>
20	P47	DRAUGHT SEALS—cover windscreen bolt access holes behind "kick" panels—make your own from interior vinyl material (LH/RH)	2	<input type="checkbox"/>
21	P35	COVERS—for ends of rear top stiffener/bracket—made from top material/vinyl	2	<input type="checkbox"/>
22	F122-03	RIVET—solid steel flat head—9/16" length, top frame	2	<input type="checkbox"/>
23	F122-01	RIVET—solid steel truss head—9/16" length, top frame	20	<input type="checkbox"/>
23	F122-02	DITTO—15/16" length, top frame	4	<input type="checkbox"/>
24	F122-05	BRASS BEARING WASHER—between moving parts where rivets are positioned	24	<input type="checkbox"/>
25	P66	RUBBER SEAL/PAD—header bow, under cover—not original but will help provide additional water and draught seal	1	<input type="checkbox"/>
26	M30	COPPER SOCKET—top bow ends—supplied in pairs	1	<input type="checkbox"/>
27	RS-9	WING BOLT—rechroming service—see rebuilding service listing	2	<input type="checkbox"/>
28	M72a	TOGGLE LATCH BRACKET—as original, chromed, 1600—can be retrofitted to early cars	1	<input type="checkbox"/>
29	M72b	STRIKE—top of windscreen frame, chromed, 1600—can be retrofitted to early cars	1	<input type="checkbox"/>
30	P32	RUBBER PAD—coupé door handle	2	<input type="checkbox"/>
31	F92	FASTENER KIT—coupé door—65 pc. kit for one door	2	<input type="checkbox"/>
32	M33	TAPPING PLATE—coupé door striker	2	<input type="checkbox"/>
33	P6	PACKING/SHIM—coupé striker—approx. 1/8" thick	A/R	<input type="checkbox"/>
34	F15	SCREW—available in 1" & 1 1/4" lengths	A/R	<input type="checkbox"/>
34	F84	FASTENER KIT—services strikers and hinges—coupé and roadster—88 pcs.	1	<input type="checkbox"/>
35	M38	TRIM JOINER—coupé glass, chromed brass—4 pc. set	1	<input type="checkbox"/>
36	M32	TAPPING PLATE—roadster striker	2	<input type="checkbox"/>
37	P5	PACKING/SHIM—roadster striker	A/R	<input type="checkbox"/>
38	M34	TAPPING PLATE & SCREW—door buffer	2/4	<input type="checkbox"/>
39	F32	FASTENER UNIT—front cockpit rail to body	6	<input type="checkbox"/>
40	P33	FIBREBOARD STIFFENER—spare tire cover	1	<input type="checkbox"/>

INTERIOR, TOP, DOORS, WINDOWS CONT.

Ill #	Part #	Description	Qty. per veh.	
41	M14	STIFFENER—roadster interior door panel	2	<input type="checkbox"/>
42	W3	FRONT COCKPIT RAIL—with metal ends and F32 fasteners—does not include rubber	1	<input type="checkbox"/>
43	W1	WOOD RAIL—top of door—Use with aluminum front (LH/RH)	2	<input type="checkbox"/>
44	F31a	FASTENER KIT—rear corner alum. cockpit rail—10 pc. kit services one rail	2	<input type="checkbox"/>
45	F31b	FASTENER UNIT—8 pc. unit is used on rear rail and door rail	9	<input type="checkbox"/>
	F31	FASTENER KIT—22 pc. kit services one door rail—includes F31b units, plus...	2	<input type="checkbox"/>
	F81	MASTER FASTENER KIT—services all cockpit rails—includes 2 F31a, 2 F31, 5 F31b, and 6 F32	1	<input type="checkbox"/>
47	P69-01	PACKING STRIP KIT—rear corner alum. rail repair—includes attachment screws—services 2 rails	1	<input type="checkbox"/>
48	P69-02	DITTO—forward door rail alum. sections	1	<input type="checkbox"/>
49	P63	CUSHION MATERIAL—for seat backs—rubberized horse hair—4 pc. kit services two seats	1	<input type="checkbox"/>
50	P65	CUSHIONS—seat bottoms (LH/RH)	2	<input type="checkbox"/>
51	W6/7	WOOD TACKING BLOCK SET—bottom of back frame	2	<input type="checkbox"/>
52	P40	FIBREBOARD STIFFENER—seat back—supplied in pairs	2	<input type="checkbox"/>
53	F50-02	FASTENER KIT—seat backs to bottom frames—6 pc kit—services two seats	1	<input type="checkbox"/>
54	W5	WOOD & PERF. STEEL BOTTOM ASSEMBLY (LH/RH)	2	<input type="checkbox"/>
56	F22	“T” NUT—for seat rails and accel. pedal stop	10	<input type="checkbox"/>
57	F50-03	FASTENER KIT—rails to floorboards, services two seats. 16 pcs.	1	<input type="checkbox"/>
57	F50-03c	DITTO—as F50-03 except screws are coarse threaded to fit “T” nuts found in many replacement floorboards	1	<input type="checkbox"/>
58	RS-18	UPPER RAIL REPLATING SERVICE—see rebuilding service listing		<input type="checkbox"/>
59	M48	SLIDE RAIL—seat frames to floor	4	<input type="checkbox"/>
60	M73	BOTTOM SEAT FRAME—complete (LH/RH)	2	<input type="checkbox"/>
60a	M77	“U” CHANNEL—for repair of frames—with instructions	4	<input type="checkbox"/>
61	M40	WASHER —DOUBLE “D” SHAPE—supplied in pairs	1	<input type="checkbox"/>
62	F57	NUT—side curtain socket	2	<input type="checkbox"/>
63	RS-10	SOCKET RECHROMING SERVICE—see rebuilding service listing		<input type="checkbox"/>
64	P41	FIBREWASHER—ignition switch to panel	1	<input type="checkbox"/>
65	P49	RUBBER WASHER—map lamp to fascia	1	<input type="checkbox"/>
66	RS-5	SWITCH NUT RECHROMING SERVICE—see rebuilding service listing		<input type="checkbox"/>
67	P70	RUBBER PIPING—correct O.D., cover with vinyl—attaches to top of fascia panel	1	<input type="checkbox"/>
68	M68	CHROMED WASHER—turn signal jewel to fascia	1	<input type="checkbox"/>
69	SC8	CLASP BRACKET WITH SLEEVE—side curtain frame, prevents blow-out—includes fasteners	2	<input type="checkbox"/>
70	RS19	BRACKET REPLATING SERVICE—aluminum frames—see rebuilding service listing		<input type="checkbox"/>
71	SC1	FELT KIT—glass runners, factory alum. side curtains—services two	1	<input type="checkbox"/>
72	SC2	FASTENER KIT—factory alum. side curtains, services two—44 pcs.	1	<input type="checkbox"/>
73	SC3	GLASS—front stationary—fabric covered side curtains	2	<input type="checkbox"/>
74	SC4	GLASS—with knobs, rear, sliding—fabric covered side curtains—(LH/RH)	2	<input type="checkbox"/>
75	SC5	BRACE—welds to side curtain frame—holds SC4 glass	2	<input type="checkbox"/>
76	F50	FASTENER KIT—upper rails to seat frame—48 pc. kit—services two frames	1	<input type="checkbox"/>
77	P51	FELT KIT—coupé door, glass runners and latch bar, services two doors	1	<input type="checkbox"/>
78	P4	PACKING/SHIM—door hinge—approx. 1/8” thick	A/R	<input type="checkbox"/>
79	M31	TAPPING PLATE—hinge to pillar	4	<input type="checkbox"/>
80	W2	WOOD STIFFENER/ANGLE GUIDE- glues to back of door panel	2	<input type="checkbox"/>
		See separate listings for complete listing of side curtain parts		
	P75A/B	DOOR SEAL SETS— orig. style for one vehicle complete and fully assembled for roadsters and coupes. Avail. in six colors—light red, black, dark red, gray, tan, and medium blue.	1	<input type="checkbox"/>
	P82	RUBBER SEAL—boot lid to body. Proper fit and durometer insures an easy shut and open	1	<input type="checkbox"/>

METAL LOOP CLIPS—MGA APPLICATIONS NOTED

Part #	Description	Qty. per veh.	
M37-01	Loop size=3/16" Screw hole size=7/32"—Clip to fasten wires to heater switch control lever assembly	1	<input type="checkbox"/>
M37-02	Loop size=5/16" Screw hole size=15/32"—Clip to fasten fuel pipe to rear shock mount bolt	1	<input type="checkbox"/>
M37-03	Loop size=3/16"x2 Screw hole size=1 1/32"—Clip(double pipe style) to hold overflow pipes—carb. to side of engine produced from brass as original	1	<input type="checkbox"/>
M37-04	Loop size=1/2" Screw hole size=13/32"—Clip to fasten heater (water) pipe to top of intake manifold	2	<input type="checkbox"/>
M37-05	Loop size=1/8" Screw hole size=13/32"—Clip to fasten vacuum pipe to rear of head	1	<input type="checkbox"/>
M37-06	Loop size=1/2" Screw hole size=9/32"—Clip to house rubber buffer (CSR part no. P50) and fasten speedometer cable	1	<input type="checkbox"/>
M37-07	Loop size=3/16" Screw hole size=7/32"—Brake pipe to RH battery rack, therm. pipe to body	4	<input type="checkbox"/>
* M37-08	Loop size=1/4" Screw hole size=9/32"—Clutch pipe attachment—alternate to early style half clip	2	<input type="checkbox"/>
M37-09	Loop size=1/4" Screw hole size=1 1/32"—Clutch pipe attachment—forward of master cylinder	1	<input type="checkbox"/>
M37-10	Loop size=3/8" Screw hole size=7/32"—Wiring harness forward, upper area of bonnet latch bulkhead	3	<input type="checkbox"/>
M37-11	Loop size=1/2" Screw hole size=9/32"—Neg. battery cable to extra long floorboard screw—rear of RH main floorboard	1	<input type="checkbox"/>
M37-12	Loop size=1/4" Screw hole size=7/32"—Wiring harness to clips—RH, rear chassis, wheel arch area	2	<input type="checkbox"/>
M37-13	Loop size=1/2" Screw hole size=1 1/32"—Wiring harness to wing bolts—inside engine bay area—RH side. Headlamp/ parking lamp cables to wing bolts—bottom, front of wings	4	<input type="checkbox"/>
* M37-14	Loop size=5/16" Screw hole size=1 1/32"—Fuel pipe to heater box shelf/bulkhead area, later style. Alternate to early style half clip	2	<input type="checkbox"/>
M37-15	Loop size=3/16" Screw hole size=1 1/32"—Choke cable and brake pipe to master cylinder area, brake pipe to rear ("pumpkin"), license lamp wiring to license mounting bracket	4	<input type="checkbox"/>
M37-16	Loop size=5/8" Screw hole size=1 1/32"—Main harness to heater box shelf/bulkhead—RH side	1	<input type="checkbox"/>
M37-17	Loop size=5/8" Screw hole size=7/32"—Main harness to "firewall" inside engine bay	2	<input type="checkbox"/>
M37-18	Loop size=1/8" Screw hole size=7/32"—Oil gauge pipe to heater box shelf and firewall	2	<input type="checkbox"/>
M37-19	Loop size=5/16" Screw hole size=7/32"—Dipper switch wiring, emergency brake cable to RH battery rack	2	<input type="checkbox"/>
M37-20	Loop size=3/16" Screw hole size=9/32"—Brake pipe to toeboard plate	1	<input type="checkbox"/>
M37-21	Loop size=3/8"x2 Screw hole size=7/32"—Battery cable and harness to RH underside of chassis	6	<input type="checkbox"/>

*Also available in "Half" Style—see separate listing

ADDITIONAL CLIPS

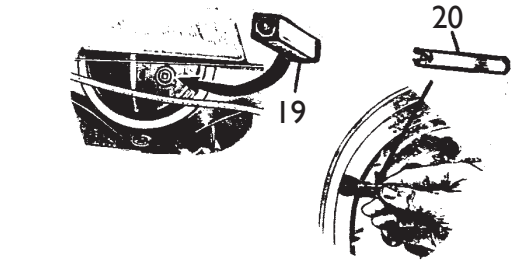
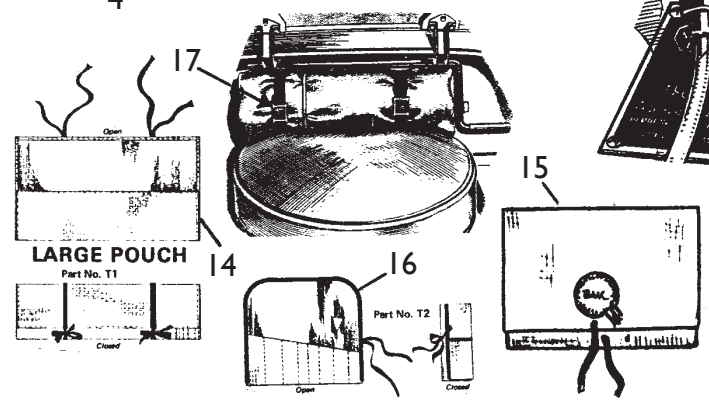
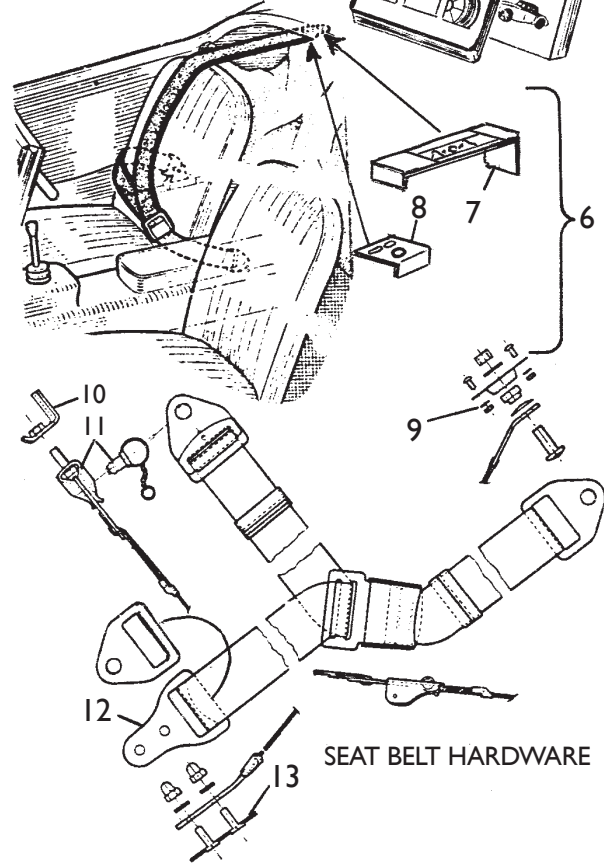
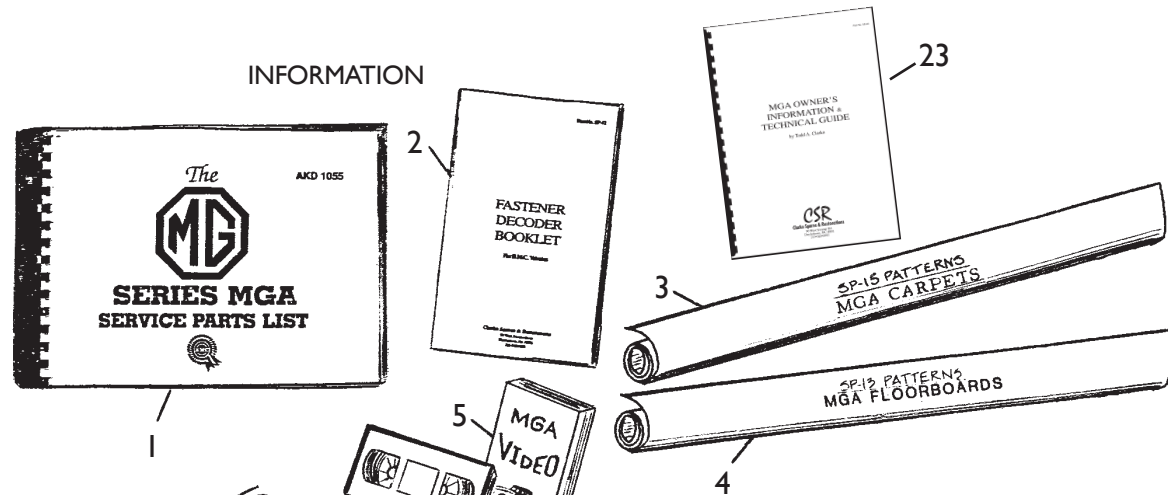
Part. No.	Loop size	Hole size		Part. No.	Loop size	Hole size	
M37-22	1/2"	7/32"	<input type="checkbox"/>	M37-28	7/16"	13/32"	<input type="checkbox"/>
M37-23	1"	1 1/32"	<input type="checkbox"/>	M37-29	1/4"	1 1/32"	<input type="checkbox"/>
M37-24	5/8"	9/32"	<input type="checkbox"/>	M37-30	9/16"	1 1/32"	<input type="checkbox"/>
M37-25	1/4"	13/32"	<input type="checkbox"/>	M37-31	5/8"	13/32"	<input type="checkbox"/>
M37-26	3/8"	1 1/32"	<input type="checkbox"/>				
M37-27	7/8"	9/32"	<input type="checkbox"/>				

See separate listing for individual and kit prices.

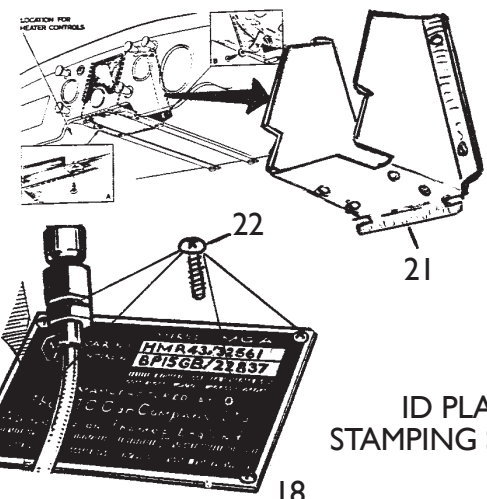
Also refer to CSR publication *Clips, Clamps & Special Fittings for British Cars.*

SPECIAL FITTINGS & SUNDRIES

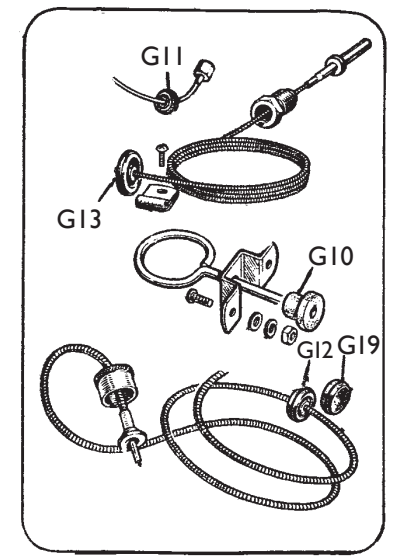
INFORMATION



SPEAKER MOUNTING



ID PLATE STAMPING SERVICE



SPECIAL FITTINGS & SUNDRIES

Ill. #	Part #	Description	Qty. per veh.	<input type="checkbox"/>
1	SP-11	FACTORY PARTS MANUAL—I500 reprint in spiral binder		<input type="checkbox"/>
1	SP-16	FACTORY PARTS MANUAL—I600 ditto		<input type="checkbox"/>
2	SP-12	FACTORY FASTENER DECODER BOOKLET—a reprint of a factory pamphlet which decodes BMC fastener part nos.		<input type="checkbox"/>
3	SP-15	CARPET BLUEPRINTS—full size, detailed patterns includes shapes of all carpet sections for roadster and coupé plus underfelt pieces		<input type="checkbox"/>
4	SP-13	FLOORBOARD BLUEPRINTS—fullsize, detailed patterns of all 7 pcs. for I500 and I600 cars		<input type="checkbox"/>
5	SP-17	MGAVIDEO—collection of MGA related I6mm films produced and directed by Todd Clarke; entertainment and educational value—approx. 2 hrs.		<input type="checkbox"/>
6	M70	SEAT BELT MOUNTING BRACKETS & HARDWARE—supplied individually and in kits, belts not included. Kits service two seats and include installation instructions. These pcs. are applicable to many BMC produced vehicles.		<input type="checkbox"/>
6	M70a	MOUNTING KIT, ROADSTER—3 point belts	1	<input type="checkbox"/>
6	M70b	MOUNTING KIT, COUPÉ—ditto	1	<input type="checkbox"/>
6	M70c	MOUNTING KIT, MK II—ditto	1	<input type="checkbox"/>
7	M70-08	TONNEAU BRACKET & HARDWARE—roadster	2	<input type="checkbox"/>
8	M70-09	MK II TONNEAU ADAPTER BRACKET—double hole to single point mounting	2	<input type="checkbox"/>
9	M70-02	CIRCULAR BRACKET—with fasteners—tunnel, all MGAs	2	<input type="checkbox"/>
10	M70-10	“U” BRACKET—attaches to frame sides—all MGAs (LH/RH)	2	<input type="checkbox"/>
11	M70-01	QUICK RELEASE BRACKET—attach to M70-10 bracket	2	<input type="checkbox"/>
12	M70-04	ELONGATED BRACKET—BMC style upper bracket, sewn to belt webbing—can be retrofitted to new belts	2	<input type="checkbox"/>
13	M70-06	DOUBLE STUD PLATE BRACKET—coupé—mounts to wheel arch	2	<input type="checkbox"/>
	M70-03	BOLT ASSEMBLY—for mounting single point belt end-hardened 7/16” hex bolt with washers and nuts	A/R	<input type="checkbox"/>
	M70-05	TAPPING PLATE—two 5/16-24 tapped holes—1-3/16” apart—typical BMC- Austin Healey, etc.	A/R	<input type="checkbox"/>
	M70-07	TAPPING PLATE—two 5/16-24 tapped holes—2” apart—typical BMC-Austin Healey, etc.	A/R	<input type="checkbox"/>
14	T1*	TOOL POUCH—large	1	<input type="checkbox"/>
15	T8	MANUAL POUCH—for holding literature, etc. A CSR accessory	1	<input type="checkbox"/>
16	T2*	TOOL POUCH—small for holding hand tools	1	<input type="checkbox"/>
17	T3*	STRAP ASSEMBLY—tool rolls to boot wall—supplied in pairs	1	<input type="checkbox"/>
18	RS-13	ID PLATE STAMPING—chassis and heater ID plates—see rebuilding service listing		<input type="checkbox"/>
19	T7	TOOL—for removing rear axle plug and some trans. plugs	1	<input type="checkbox"/>
20	T5	TOOL—tire valve removal	1	<input type="checkbox"/>
21	P68	SPEAKER MOUNT—with fasteners, as original—speaker not included	1	<input type="checkbox"/>
22	F4a	FASTENER KIT—chassis and patent plates to body—I8 pcs.	1	<input type="checkbox"/>
23	SP20	BOOK BY TODD CLARKE—MGA <i>Owner's Information & Technical Guide</i> . Over 40 pages of extremely helpful text and diagrams. Written for the MGA enthusiast. Supplied spiral bound.		<input type="checkbox"/>
	*T4	POUCH AND STRAP KIT	1	<input type="checkbox"/>

GROMMETS

GROMMETS—INDIVIDUAL (most are supplied in kits as detailed in “PACKINGS, GASKETS, AND SEALS”)

Part #	MGA Application	Panel Hole Size	I.D.	
G5	Roadster Door Pockets/Radiator bulkhead	1”	1 1/16”	<input type="checkbox"/>
G10	Bonnet/boot lid release rods	3/8”	1/4”	<input type="checkbox"/>
G11	Oil gauge pipe	1/2”	1/8”	<input type="checkbox"/>
G12	Speedo/Tach cables & dip switch/rear lamp harness	5/8”	1 1/32”	<input type="checkbox"/>
G13	Temp gauge cap. tube	1”	1/8”	<input type="checkbox"/>
G14	Main wiring harness	1-3/8”	1/2”	<input type="checkbox"/>
G15	Wiper motor drive	1-1/4”	1/4”	<input type="checkbox"/>
G16	1/4” blanking plug	1/4”	—	<input type="checkbox"/>
G17	3/16” blanking plug	3/16”	—	<input type="checkbox"/>
G18	1/2” blanking plug	1/2”	—	<input type="checkbox"/>
G19	5/8” blanking plug	5/8”	—	<input type="checkbox"/>
G20	3/8” blanking plug	3/8”	—	<input type="checkbox"/>
G21	Headlamp bucket wiring	1/2”	1 1/32”	<input type="checkbox"/>
G22	Cover to body—horn wiring	9/16”	9/32”	<input type="checkbox"/>
G23	Heater Box 4” flap shaft—later MGAs	3/8”	3/16”	<input type="checkbox"/>
G24	Choke/Starter cables	5/8”	3/16”	<input type="checkbox"/>
G25	Washer bottle feed tube—windscreen	3/8”	3/16”	<input type="checkbox"/>
G26	Heater box water pipes	3/4”	9/16”	<input type="checkbox"/>
G27	Heater motor mounting buffers—sold as three set	3/8”	1/4”	<input type="checkbox"/>

FASTENERS

This listing includes an extensive line of authentic fasteners to service your MGA. *Fastener* denotes screws, washers, nuts, bolts, etc. In most cases an individual fastener or fastener kit is prefixed “F”, however there are a few pieces which are prefixed “M”. This listing is divided into several categories to help you locate the fastener you are in need of. Discounts are offered when virtually all kits that apply to your vehicle are purchased at one time. See our price sheets and flyers or ask us for details.

FASTENER KITS: include all pieces needed to fasten a particular item. Number indicates the amount of pieces in a kit. For example: F4—Rubber buffers to bonnet surround... 30. There are 10 screws, 10 locking washers, and 10 hex nuts in each F4 kit and this is what is required to fasten 10 rubber buffers. Kits are supplied packaged and labeled. Fasteners are supplied plated and we make every effort to match the finish of the original. Unless otherwise specified, kits service one vehicle. See *Master Kits* for comprehensive assortments of smaller kits. In some cases master kits come with installation guides.

INDIVIDUAL PIECES: certain fasteners are supplied on a piecemeal basis. If you don't see what you are looking for, *please send a S.A.S.E.* along with your request and I will state availability and price.

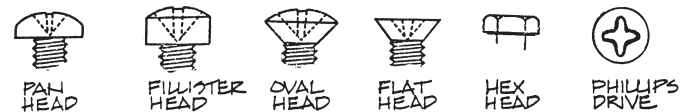
NOTE: It is recommended that all fixed nuts (those nuts which are permanently fastened to body sections) be thoroughly cleaned and chased with a thread tap whenever possible. This process will insure easy installation of fresh machine screws. The most common sizes found on the MGA are: 10/32, 1/4-28, 5/16-24, and 3/8-24. There are some BSF/Whitworth threaded fittings and fasteners on the MGA. These pieces are found on gauges, brake parts, fuel components, and a few body/trim related parts. Taps and dies are available, although you may have to search a bit harder to find them

When measuring screw and bolt lengths, the length of a pan, fillister, and hex headed fastener is measured from beneath the head to the end of the thread. The length of a recessed head (oval and flat) is measured from the top of the recess to the end of the thread. The length added by a cone point is not figured into the overall length. Other details concerning fasteners can be found in the factory workshop manual, factory parts manual, and CSR publications, including SP-12 *Factory Fastener Decoder Booklet* and SP-20 *MGA Owner's Information and Technical Guide* by Todd Clarke.

THE IMPORTANCE OF THE LOCKWASHER

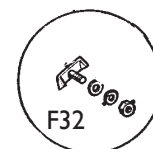
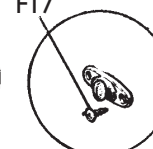
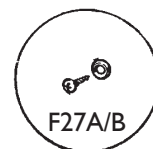
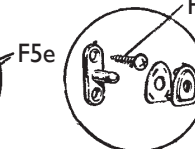
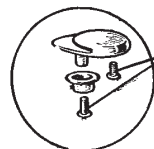
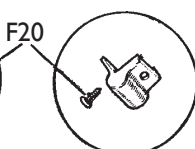
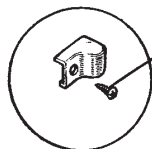
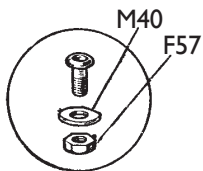
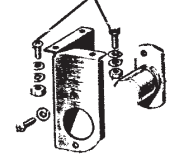
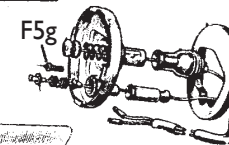
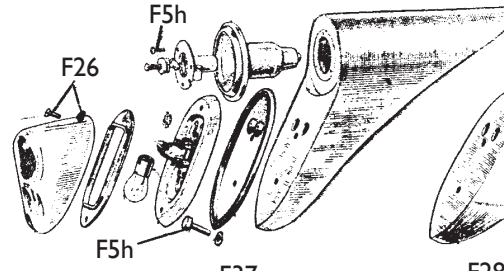
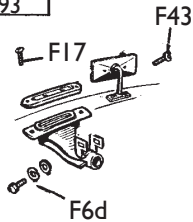
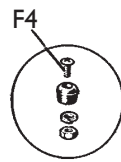
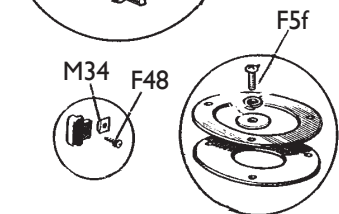
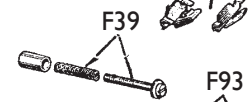
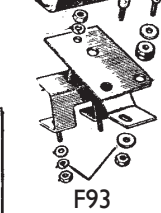
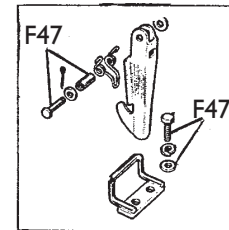
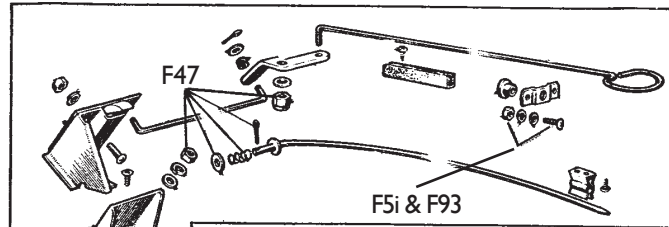
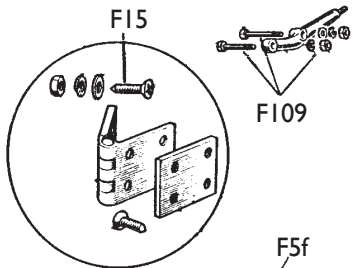
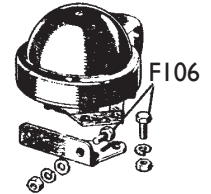
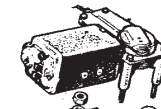
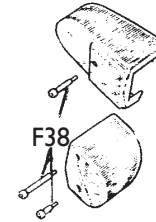
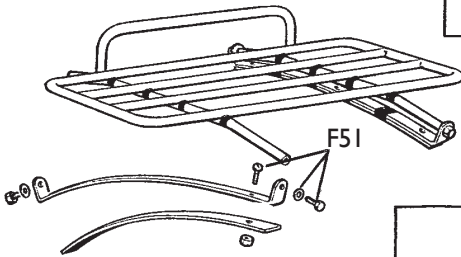
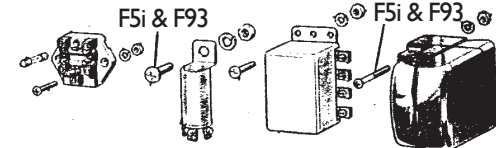
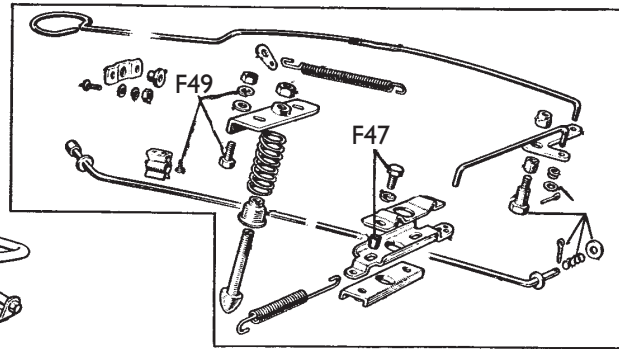
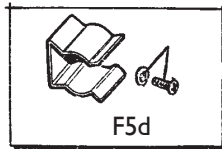
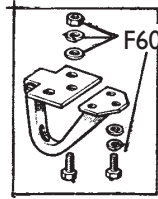
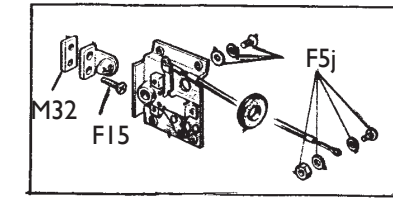
Spring washers are used in the assembly of components which are likely to be subject to vibration in use. Their principle function is to compensate for developed looseness and loss of tension between components.

The initial tension in a bolt or screw is gradually reduced either by stretching of the bolt or by the wearing down of the contact surfaces (either by breakdown of rust, scale, paint, etc. on the surface or by abrasion of the actual surface). The use of a spring washer under the nut or bolt head exerts a continual axial force and acts as a take-up device to prevent the tightening pressure diminishing to the point where the nut or bolt can rotate easily.



FASTENERS

Supplied individually and in kits
see the following pages for pcs. noted
on this page plus many more not shown



BODY/CHASSIS FASTENERS—KITS AND INDIVIDUAL

Part #	Description	Pcs. in kit	Qty/veh.	
F1	Convertible top wood bow to frame	10	1	<input type="checkbox"/>
F2-01	Convertible top bows to side frame members	—	12	<input type="checkbox"/>
F2-02	Ditto—oversize for stripped holes	—	A/R	<input type="checkbox"/>
F-4 (F-4a)	Rubber buffers to bonnet surround (F4a kit services chassis # and patent plates—18 pieces)	30	1	<input type="checkbox"/>
F-5	Pan/binding head, phillips, machine screw.As supplied in F5 kits. State length: 1/4", 3/8", 1/2", 5/8", 3/4", 1", and 1 1/4"	—	—	<input type="checkbox"/>
F5a	Heater box to body	14	1	<input type="checkbox"/>
F5b	Headlamp buckets to fenders	24	1	<input type="checkbox"/>
F5c	Side harness and battery cable double loopclips to chassis frame brackets	18	1	<input type="checkbox"/>
F5d	Hand crank clips to boot wall	6	1	<input type="checkbox"/>
F5e	Chromed retainers to body tonneau (conv. top rear bar)	8	1	<input type="checkbox"/>
F5f	Petrol filler neck gasket retainer to boot foot	9	1	<input type="checkbox"/>
F5g 1600	Front parking lamp body to fender	8	1	<input type="checkbox"/>
F5h 1500	Tail lamp bodies to plinths (adapters)	8	1	<input type="checkbox"/>
F5h 1600	Tail lamp bodies to plinths	14	1	<input type="checkbox"/>
F5h Mk.II	Tail lamp bodies to plinths	12	1	<input type="checkbox"/>
F5i	Engine compartment.All pieces needed to fasten electrical equipment, loop clips, I.D. plates, etc. F4a & F5a are included.Services all models	96	1	<input type="checkbox"/>
F5j	Latch assembly to door.Roadster	32	1	<input type="checkbox"/>
F5L	Fascia panel stiffeners to body and fascia	24	1	<input type="checkbox"/>
F5m	Gearbox tower cover to tunnel	16	1	<input type="checkbox"/>
F5n	Accelerator cable guide plate to firewall panel	6	1	<input type="checkbox"/>
F5p	Fascia panel to tonneau ledge/body	9	1	<input type="checkbox"/>
F6	10-32 Hex head machine screw as in F6 kits—5/8" length	—	61	<input type="checkbox"/>
F6a	Bottom of fenders to body	38	1	<input type="checkbox"/>
F6b	Front apron to body and bottom of front fenders	42	1	<input type="checkbox"/>
F6c	Bonnet/boot lid hinges to body.Services 2 hinges	38	2	<input type="checkbox"/>
F6d	MASTER KIT.Includes F6a, F6b, and two F6c plus an additional 35 pcs.for bonnet safety catch, boot lid striker, defroster vent adapters, etc. Includes all 10-32 hex head screws	191	1	<input type="checkbox"/>
F7a	Locking washer for #10 screws—F5 & F6 Regular & heavy duty available. Please specify	—	—	<input type="checkbox"/>
F7b	Rectangular washer as supplied in F6a & F6b kits	—	18	<input type="checkbox"/>
F7c	Round washer for #10 screw—F5 & F6. 1/2" O.D.	—	—	<input type="checkbox"/>
F8	Hex nut for #10 screw—F5 & F6	—	—	<input type="checkbox"/>
F9	Conv. top frame sides to body (behind seats)	8	1	<input type="checkbox"/>
F10	Weld nut as supplied on floorboard channels, drive tunnel, and toeboard plate.	—	67	<input type="checkbox"/>
F11	Aluminum plates to frame. Front sides under body	26	1	<input type="checkbox"/>
F12	Complete windscreen rebuilding kit.All pcs. needed to fasten frame together and position to body	74	1	<input type="checkbox"/>
F13	Square nut. Size 10/32 to fit box style retainers (M35)	—	—	<input type="checkbox"/>
F14	Square nut. Size 1/4-28 to fit box style retainers (M35a)	—	—	<input type="checkbox"/>
F14	(5/16") Square nut. Size 5/16-24	—	—	<input type="checkbox"/>
F6	10-32 hex head screws (5/16" face on hex) also available in 1/2", 9/16", & 3/4" lengths	—	—	<input type="checkbox"/>

BODY/CHASSIS FASTENERS—KITS AND INDIVIDUAL CONT.

Part #	Description	Pcs. in kit	Qty/veh.	
F15	Screw for hinges, striker plate, and floorboards: 1", 1-1/8", 1-1/4", 1-3/4"	—	—	<input type="checkbox"/>
F16	Countersinking washer for floorboards	—	67	<input type="checkbox"/>
F15/16	Floorboards to frame	134	1	<input type="checkbox"/>
F19	Rear fender forward splash plates to body	20	1	<input type="checkbox"/>
F21	Rubber seals to splash plates—front & rear	56	1	<input type="checkbox"/>
F22	"T" nuts for seat rails and accelerator pedal stop to floorboards	10	1	<input type="checkbox"/>
F23				
F30				
F33				
F35	MASTER KIT. Front and rear bumper to frame. Includes all pcs. needed to fasten units together and position to car F18, F13, & all chromed bolts included	109	1	<input type="checkbox"/>
F35b	Chromed bumper bolt. Position behind front overrides.: 1" length.	—	2	<input type="checkbox"/>
F35c	Chromed bumper bolt. Position on end and center of front bumper and on ends of rear bumper. 1-1/8"	—	5	<input type="checkbox"/>
F35d	Chromed bumper bolt. Position on center of rear bumper. 2"	—	2	<input type="checkbox"/>
F43	Dash mirror to body	2	1	<input type="checkbox"/>
F47	Bonnet & boot lid release rods and prop assemblies Includes all springs except for safety catch spring	—	1	<input type="checkbox"/>
F48	Striker pillar face plates to pillars and top of outer sill. Includes screws for buffer tapping plates. Fixed nuts in side of pillar must be chased with 10-32 tap. (sheet metal screws can be substituted for pillar attachment machine screws—some repro pillars do not come with boxed nuts—please specify)	14	1	<input type="checkbox"/>
F50	Adjustment slides to seat frame channels	48	1	<input type="checkbox"/>
F50-01	Seat frame and slide/channel assemblies. Includes both fine and coarse F50-03	88	1	<input type="checkbox"/>
F50-02	Seat backs to bottom frame. (Installation tip—chase the threaded area of the back frame with a 5/16-24 thread tap The flat washer acts as a bearing and should be installed between the back and bottom frames—grease this area.)	16	1	<input type="checkbox"/>
F50-03	Adjustment rails to floor. Available in fine and coarse threads. (Original were fine threaded for "T" nuts in floor.) Please specify thread.	16	1	<input type="checkbox"/>
F51	Factory luggage rack to boot lid	24	1	<input type="checkbox"/>
F58	Typical 5/16" round body washer. As found in heater box shelf to frame. 1" O.D.	—	60	<input type="checkbox"/>
F59	Correct O.D. washer for 5/16" bolts—main boot floor to frame. 1-1/4" O.D.	—	2	<input type="checkbox"/>
F60	Front parking lamp to body (1500)	12	1	<input type="checkbox"/>
F62	3/4" O.D. washer for most 1/4" body screws Locking washers are available in various strengths and sizes. Standard medium grade will be shipped unless otherwise instructed 25% discount applies to orders of 50 or more of one size.		40	<input type="checkbox"/>
F63	1/4" Locking washer	—	—	<input type="checkbox"/>
F64	5/16" Locking washer	—	—	<input type="checkbox"/>
F65	3/8" Locking washer Hex nuts are available in various strengths, materials, and dimensions. Standard grade 2 steel will be shipped unless otherwise instructed. Add 50% for grade 5 and 8. 25% discount applies to orders of 50 or more of one size.	—	—	<input type="checkbox"/>
F66	1/4"-28 hex nut—grade 2	—	—	<input type="checkbox"/>
F67	5/16"-24 hex nut—grade 2	—	—	<input type="checkbox"/>

BODY/CHASSIS FASTENERS—KITS AND INDIVIDUAL CONT.

Part #	Description	Pcs. in kit	Qty/veh.	
F68	3/8"-24 hex nut—grade 2	—	—	<input type="checkbox"/>
F69a	1/4" hex head bolts with cone points in various lengths. Bolts carry varying factory head markings. A separate listing will be supplied once bolts are available.	—	—	<input type="checkbox"/>
F69b	5/16" hex head bolts with cone point in various lengths. See F69a			
	F70 to F75 kits include 1/4" and 5/16" hex bolts and locking washers. All bolts feature LINREAD marked heads with cone points See F58, F59, and F62 for flat washers. See F6a for screws to service the bottom of the fenders.	—	—	<input type="checkbox"/>
F70	Rear fender rearmost splash plates to body fender	16	1	<input type="checkbox"/>
F71	Front fender splash plates to body	24	1	<input type="checkbox"/>
F72	Rear fenders to body	44	1	<input type="checkbox"/>
F73	Front fenders to body	68	1	<input type="checkbox"/>
F74	Heater box shelf to frame	18	1	<input type="checkbox"/>
F75	Body to chassis other than heater box shelf	44	1	<input type="checkbox"/>
F77	Auster plate to windscreen frame	—	2	<input type="checkbox"/>
F83	Double coil spring washers service bonnet/boot release rods, and carb. fittings	10	1	<input type="checkbox"/>
F83a	Double coil spring washer-release rods—3/16" size	—	6	<input type="checkbox"/>
F84	Hinges and strikers to doors and pillars. Services roadsters and coupés	84	1	<input type="checkbox"/>
F92	Coupé door assembly. All pcs. required to assemble one door	65	2	<input type="checkbox"/>
F93	MASTER KIT—includes virtually all phillips head screws and associated fasteners required to fasten misc. body fittings, brackets, and electrical pieces. Includes F4, F5b, F5c, F5d, F5e, F5f, F5g, F5h, F5i, F5m, F11, F46, F48, F56a, F60, etc. Does not include F9, F15/16, F80, F84, and F92. Installation sheet incl.	400	1	<input type="checkbox"/>
F95	Fuel tank and hanging straps to chassis	24	1	<input type="checkbox"/>
F101-01	Cage nut. 10-32 size. (clips into square/rect. slot)	—	—	<input type="checkbox"/>
F101-02	Cage nut 1/4-28 size. (clips into square/rect. slot)	—	—	<input type="checkbox"/>
F102	Grill assembly to body. Available in fine and coarse threads. Specify.	18	1	<input type="checkbox"/>
F106	Bumper and horn brackets to front extension and front extension to chassis	66	1	<input type="checkbox"/>
F109	Rear bumper braces to chassis	14	1	<input type="checkbox"/>
F114	Toeboard support/firewall plate to chassis. Includes fasteners to mount blanking/steering shaft plates to firewall panel.	39	1	<input type="checkbox"/>
F122-01	Rivet, solid steel truss head. 9/16" length. For top frame assembly	—	20	<input type="checkbox"/>
F122-02	As F122-01 except 15/16" length	—	4	<input type="checkbox"/>
F122-03	Rivet, solid steel flat head. 9/16" length. For top frame assembly	—	2	<input type="checkbox"/>
F122-04	Spacer for top frame assembly. Welded and floating applications. 7/16" length.	—	4	<input type="checkbox"/>
F122-05	Brass bearing washer for top frame assembly	—	24	<input type="checkbox"/>
F124	Screw, washers, and nut assembly—accelerator stop	5	2	<input type="checkbox"/>
F125	Distance piece for F124—accelerator stop brackets	—	2	<input type="checkbox"/>
F128	Accelerator pedal shaft and associated brackets to chassis. LHD and RHD	12	1	<input type="checkbox"/>
F129	Pan, phillips head screws for "blanking" threaded nuts in chassis—accelerator pedal brackets not used. LHD/RHD	—	A/R	<input type="checkbox"/>
F130	Master cylinder and mounting bracket assembly to heater box shelf/chassis	50	1	<input type="checkbox"/>
F131	Steering column mounting and associated brackets to body/chassis. "U" clamps not included.	30	1	<input type="checkbox"/>

BODY/CHASSIS FASTENERS—KITS AND INDIVIDUAL CONT.

Part #	Description	Pcs. in kit	Qty/veh.	
F132	"T" stud/plate for mounting finishing strips to body	—	10	<input type="checkbox"/>
M35	Retainer and square nut—10/32 thread.	—	40	<input type="checkbox"/>
M35a	Retainer and square nut—1/4-28 thread.	—	34	<input type="checkbox"/>
M35b	Retainer and square nut—5/16-24 thread.	—	A/R	<input type="checkbox"/>
M37	Metal loop clips—see loop clip listing			
M46a	Driving lamp bracket to bumper	9	2	<input type="checkbox"/>
M54	Oblong fender washers (Individual & kit)	42	1	<input type="checkbox"/>
M55	Bracket/nut assembly for bottom of rearmost splash plate to fender	—	2	<input type="checkbox"/>

ELECTRICAL COMPONENTS FASTENERS—KITS AND INDIVIDUAL

Part #	Description	Pcs. in kit	Qty/veh.	
F5a	See body/chassis fastener section			
F5b	See body/chassis fastener section			
F5c	See body/chassis fastener section			
F5g	See body/chassis fastener section			
F5h	See body/chassis fastener section			
F5i	See body/chassis fastener section			
F25	Starter to aluminum trans. housing	4	1	<input type="checkbox"/>
F26	Rear lamp lenses to body	8	1	<input type="checkbox"/>
F38	Rear lamp lenses to body MkII	12	1	<input type="checkbox"/>
F39	Headlamp adjustment screw and spring kit. Early style.	12	1	<input type="checkbox"/>
F40	Ditto. No Springs. Later style.	4	1	<input type="checkbox"/>
F41	Chromed headlamp retainer to plate	6	1	<input type="checkbox"/>
F42	Outer headlamp rim to bucket fastener	4	1	<input type="checkbox"/>
F42a	Bracket for outer headlamp rims, clips to bucket	—	2	<input type="checkbox"/>
F46	Defroster hose adapters to heater box	6	1	<input type="checkbox"/>
F49	Lucas style battery cable ends to terminals	4	1	<input type="checkbox"/>
F60	Front parking lamp body to fender. 1500	12	1	<input type="checkbox"/>
F61	Fuel pump mounting—to bracket/chassis—includes 2 BSF threaded hex bolts	12	1	<input type="checkbox"/>
F93	See body/chassis fastener section			<input type="checkbox"/>
F116	Brass nut—10-32 thread hex with 5/16" on face. As used on Lucas components, coils, dist., etc.	—	A/R	<input type="checkbox"/>
F126	Horn button to bracket	6	1	<input type="checkbox"/>
M37	Loop clips for fastening cables, etc. See loop cable listing			<input type="checkbox"/>
M62	Metal strap for securing rear harness to chassis and harness to front extension when optional LH horn is fitted	—	2/4	<input type="checkbox"/>
P42	"Rubber" clip for attaching misc. harness sections	4	1	<input type="checkbox"/>

TRIM FASTENERS—KITS AND INDIVIDUAL

Part #	Description	Pcs. in kit	Qty/veh.	
F3	Top to rear bow	4	1	<input type="checkbox"/>

TRIM FASTENERS—KITS AND INDIVIDUAL CONT.

Part #	Description	Pcs. in kit	Qty/veh.	
F12	See body/chassis fastener section			<input type="checkbox"/>
F17	Two defroster vents to body	4	1	<input type="checkbox"/>
F18	Front and rear license plates to backing plates	18	1	<input type="checkbox"/>
F20	Door seal end caps to body	8	1	<input type="checkbox"/>
F27	Two turn button fasteners to cockpit corner rails	4	1	<input type="checkbox"/>
F27a	Interior panels to body and doors—roadster	60	1	<input type="checkbox"/>
F27b	Interior panels to body and doors—coupé	90	1	<input type="checkbox"/>
F28	Side curtain nut plates to doors	6	1	<input type="checkbox"/>
F31	Cockpit rail to door top. Services entire two-piece assembly. For one rail.	23	2	<input type="checkbox"/>
F31a	Rear corner cockpit rail to body	10	2	<input type="checkbox"/>
F31b	Fastener unit for door rails and rear cockpit rail. Two of these units are included in F31 kit.	—	9	<input type="checkbox"/>
F32	Front cockpit rail to body. Four piece unit.	—	6	<input type="checkbox"/>
F37	6 double screw studs to body (side curtain pouch and tonneau cover)	12	2	<input type="checkbox"/>
F41	See electrical fastener section			
F42	See electrical fastener section			
F43	Dash mirror to body	2	1	<input type="checkbox"/>
F44	Map lamp to fascia panel	8	1	<input type="checkbox"/>
F45	Roadster door pockets to door	28	1	<input type="checkbox"/>
F51	See body/chassis fastener section			
F57	Nut for side curtain pocket.	—	2	<input type="checkbox"/>
F80	MASTER KIT—Finishing kit for roadster. Includes F17, F20, F27, F27a, F28, F37, F43, F44, and F45.	132	1	<input type="checkbox"/>
F81	MASTER KIT—Cockpit rail fasteners. Includes two F31, two F31a, five 31b, and six F32.		1	<input type="checkbox"/>
F92	See body/chassis fastener section			
F120	Coupé and factory hardtop headliner to roof	48	1	<input type="checkbox"/>
M40	Obround washer for side curtain socket. Set of two.	—	1	<input type="checkbox"/>
M68	Chromed washer for turn signal jewel to fascia	—	1	<input type="checkbox"/>

MECHANICAL COMPONENTS FASTENERS—KITS AND INDIVIDUAL

F24	Cover plates to master cylinder body	14	1	<input type="checkbox"/>
F29	Cotter pins (brass) for carb. assembly	10	1	<input type="checkbox"/>
F34	Original style clamp kit. Includes F34a, F34b, and F34c.	14	1	<input type="checkbox"/>
F34a	Heater hose clamps	6	1	<input type="checkbox"/>
F34b	Radiator hose clamps	6	1	<input type="checkbox"/>
F34c	Petrol tank filler neck clamps	2	1	<input type="checkbox"/>
F46	See electrical fastener section	6	1	<input type="checkbox"/>
F52	Stud, nut, and washer for manifolds to cylinder head. Four machined spacers not included.	20	1	<input type="checkbox"/>
F53	Copper washer set to service all brake and clutch fittings—1500/1600 washers also available individually	13	1	<input type="checkbox"/>
F54	Hex nut for cylinder head to block	—	11	<input type="checkbox"/>
F55	Spacer for valve cover bolts	—	2	<input type="checkbox"/>

MECHANICAL COMPONENTS FASTENERS—KITS AND INDIVIDUAL CONT.

Part #	Description	Pcs. in kit	Qty/veh.	
F56	Spacer for cable clips to RH battery rack	—	1	<input type="checkbox"/>
F56a	Screw, spacer, washer, and nut assembly—cables/clips to RH battery rack.	—	4	<input type="checkbox"/>
F67a	Chromed nut for shift lever. Locks knob in position. 5/16-24 thread	—	1	<input type="checkbox"/>
F67b	Hardened nut for manifolds to cylinder head	—	6	<input type="checkbox"/>
F76	Rivet set for engine I.D. plate to block	2	1	<input type="checkbox"/>
F78	Carb. dashpot covers to bodies	12	1	<input type="checkbox"/>
F79	Clutch slave cylinder to trans. housing	4	1	<input type="checkbox"/>
F82	Double coil spring washer—5/8" I.D. (TA/TB/TC brake shoe retainer and pedal shaft ends.)	—	6	<input type="checkbox"/>
F83	See body/chassis fasteners section	10	1	<input type="checkbox"/>
F83a	Double coil spring washer—3/16" size—carb. fittings	—	3	<input type="checkbox"/>
F83b	Ditto—5/16" size—choke cam on carb. body	—	1	<input type="checkbox"/>
F85	Push-on round nut kit for S.U. carb. fittings	7	1	<input type="checkbox"/>
F85a	Push-on round nut. #10 (large size) carb. fittings	—	4	<input type="checkbox"/>
F85b	Ditto—#6 (small size) carb. fittings	—	3	<input type="checkbox"/>
F86	Front suspension spring pan "struts" to pan and pivot arm "wishbone" assembly to chassis. This kit supplements suspension kits supplied by other companies.	66	1	<input type="checkbox"/>
F86a	Washer/retainer for front susp. wishbone pivot. (also fits other MG cars) Included in F86 kit.	—	4	<input type="checkbox"/>
F86b	Slotted nut for pivot arm ends. Included in F86 kit.	—	4	<input type="checkbox"/>
F87	Thrust washer for front suspension upper and lower links. Not included in F86 kit	—	8	<input type="checkbox"/>
F88	Hex bolt for lower susp. links. Not included in F86 kit	—	2	<input type="checkbox"/>
F89	Hex bolt for upper susp. links. Not included in F86 kit	—	2	<input type="checkbox"/>
F91	Rivets for valve cover I.D. plates	—	4	<input type="checkbox"/>
F94	Clevis pin with bearing washer and cotter pin for master cylinder and rear brake cyl. cable arms	—	4	<input type="checkbox"/>
F96	Bolt, washer, and nut assembly—front of rear springs to chassis	—	2	<input type="checkbox"/>
F97a	Transmission bell housing to engine plate. Most cars with "standard" thickness housing	21	1	<input type="checkbox"/>
F97b	Ditto—later cars with "beefed-up" transmission housing which require longer bolts	21	1	<input type="checkbox"/>
F98	Engine motor mounts and brackets to engine and chassis	48	1	<input type="checkbox"/>
F99	Exhaust mounting hangers to pipes and chassis	33	1	<input type="checkbox"/>
F100	Radiator to body	18	1	<input type="checkbox"/>
F103	Therm. cover to head studs	9	1	<input type="checkbox"/>
F104	Carbs., cable bracket, and tappet spec. plate to intake manifold	13	1	<input type="checkbox"/>
F105	Heater control panel and switch to instrument/fascia panel	10	1	<input type="checkbox"/>
F107	Hardened washer for cylinder head nuts	—	11	<input type="checkbox"/>
F108	Screw for heater box flap to shaft—inside 4" duct	—	2	<input type="checkbox"/>
F110	Rear dampers/shocks to chassis	20	1	<input type="checkbox"/>
F111	Leaf springs, shackles, and both front and rear susp. bumpers to chassis. Does not include F96 bolts	60	1	<input type="checkbox"/>
F112	Generator and associated brackets to engine/water pump	17	1	<input type="checkbox"/>
F113	Water pump to engine	8	1	<input type="checkbox"/>
F115	Propeller shaft to rear diff. and trans—1600 cars	12	1/2	<input type="checkbox"/>

MECHANICAL COMPONENTS FASTENERS—KITS AND INDIVIDUAL CONT.

Part #	Description	Pcs. in kit	Qty/veh.	
F116	See electrical fastener section			
F117	Hex bolt (large) for 1600 caliper bodies	—	4	<input type="checkbox"/>
F118	Bolts, washers, and nuts for caliper bodies and mounting. Does not include M126 lock tabs and special mounting studs. 1600 cars	20	1	<input type="checkbox"/>
F119	Slotted nut for tie rod ends	—	2	<input type="checkbox"/>
F121	Timing chain cover to engine. M61 washers not included	18	1	<input type="checkbox"/>
F124	See body/chassis fastener section			
F125	See body/chassis fastener section			
F127	Rack and pinion assembly to chassis	12	1	<input type="checkbox"/>
F128	See body/chassis fastener section			
F129	See body/chassis fastener section			
F130	See body/chassis fastener section			
M37	Metal loop clips—see loop clip listing—pg. 23			
M39	Metal strap for fastening brake pipe to rear diff. housing	—	1	<input type="checkbox"/>
M53	Spring clip for attaching breather hose to valve cover and air cleaner	—	2	<input type="checkbox"/>
M61	Oblong washers for timing chain cover	9	1	<input type="checkbox"/>
M102-05	Fastener kit to service handbrake assembly	42	1	<input type="checkbox"/>
M122	Spacers for 1600 caliper dust shield	—	8	<input type="checkbox"/>
M126	Lock tabs for 1600 caliper bodies	—	4	<input type="checkbox"/>

MASTER FASTENER KITS—ALL KITS SERVICE ONE VEHICLE

F6d	#10-32 HEX HEAD SCREW KIT—Includes all #10-32 hex head cap screws found throughout the car. Includes F6a, F6b, two F6c, plus an additional 35 pcs. for bonnet safety catch, boot lid striker, defroster vent adapters, etc. All screws are cone pointed. 191 pcs.			<input type="checkbox"/>
F35	MASTER KIT—Front and rear bumper to frame. Includes all pcs. needed to fasten units together and position to car. F18, P13, & all chromed bolts included.			<input type="checkbox"/>
F80	TRIM KIT—Includes the chromed finishing screws needed to attach misc. interior pcs., etc. on MGA roadsters. Includes F17, F20, F27, F27a, F28, F37, F43, F44, and F45. 132 pcs.			<input type="checkbox"/>
F81	COCKPIT RAIL KIT—Includes all fasteners needed to position rails to body and doors. (Sorry, we do not supply fasteners for early all-wood door and rear corner rails.) Includes two F31, two F31a, five F31b, and six F32. 130 pcs.			<input type="checkbox"/>
F93	MISC. BODY FITTINGS/BRACKETS/ELECTRICAL PCS. —Includes virtually all phillips head machine/sheet metal screws required to fasten electrical equipment, small brackets, cable clamps, etc. Associated nuts, flat washers, and locking washers are included. Includes F4, all F5 kits, F11, F46, F48, F56a, F60 plus pieces needed to fasten misc. loop clips, bonnet/boot lid wood battens, boot latch/striker assemblies, 1500 & 1600 high beam switch/bracket, etc. 400 pcs.			<input type="checkbox"/>
F200*	FASTENER KIT SPECIAL—Deduct 15% when you purchase all of these kits at one time. F1, F6d, F9, F12, F15/16, F19, F21, F22, F24, F25, F26, F29, F34, F35, two F42a, F49, F50, F50-02, F50-03, F51, two F55, two F57, two F58(kit of 20), two F59, two F62(kit of 20), F67a, six F67b, F70, F71, F76, two F77, F78, F79, F80, F81, F83 kit, F84, F85 kit, F86, four F91, F93, four F94, F95, two F96, F97, F98, F99, F100, F102, F103, F104, F105, F106, F107 kit, M40.			
F201*	FASTENER KIT SPECIAL—Deduct 15% when you purchase the F200 package plus M37 kit and M54 kit.			<input type="checkbox"/>

*Additional fastener kits and pieces can be added to F200 and F201 package specials. Any "additions" must be listed in our fastener section. F200/F201 KITS adjusted for Coupe and Twin Cam cars. Please be sure to specify

NOTES ABOUT THE BOOK

The sans-serif typeface used in this catalog for parts listings is Gill Sans, the same as used in some of the original MGA brochures. It was designed by Eric Gill, a British stone cutter and artist, and first released by British Monotype Co. in 1928. The letterforms show influence by the alphabet designed for the London Underground Railway in 1918 by Edward Johnston.

The electronic version of this catalog was updated and adapted from the 11th print edition, designed by Fred Ehmann.

Additional illustrations by T. Clarke.

MGA FACTORY TRIVIA

Rubber core shift lever knobs were supplied by BMC as a replacement for the original brass threaded units. The knobs looked the same and acted as a cure-all for stripped threads and annoying vibration noises.

Mk II striker pillar face plates incorporated a water drainage ridge which make it necessary to fit a different door seal chromed cap.

On early cars, drive tunnel extension covers (for trans. remote shifter) were welded to tunnel, not attached by screws.

A “touring kit” was available (BMC part nos. 8G1057/8G1058/8G1073 which included spare ignition pieces, hoses, bulbs, and cylinder head bits. The kit came packaged in a BMC wrap.

A headlamp flasher switch and relay assembly was available—a hole had to be punched or drilled in the fascia for installation.

A sound deadener (foam rubber) pad for the underside of the heater box shelf was available. Standard on many twin-cam cars and all coupé models.

A steering wheel Lock Assembly was offered during late production.

Early MGAs featured bronze upper and lower suspension swivel links—a carry-over from the TF. They were painted black.

The first 19,000 MGAs lacked rear fender forward splash plates.

Carpets were all wool pile with a jute backing supplied in black (roadster) and grey (coupé) only.

A rubber “Safety pad” was fitted around the rear view mirror in France only.

Wire wheel MGAs sold in Germany were fitted with hex type wheel nuts.

On very early engine I.D. tags all figures were stamped (from the top) rather than embossed/raised. The figures were stamped on the plate after it was riveted to the block which sometimes left impressions in the casting boss itself.

No less than three types/styles of valve cover caps were used over the seven years of production. The early cap featured a separate plate on which the names of various oil companies were printed rather than embossed into the metal. The latest cap featured a slightly higher domed look and was designed to fit tighter than the early and intermediate “1500” caps. Vibration noises from the early caps were many times mistaken for valve clatter.

MKII boot floors featured 1/2” drain holes which were plugged with rubber blanking grommets.

Send us more MGA factory trivia for possible publication in future electronic and print versions of our catalogue. Your donation will be noted.