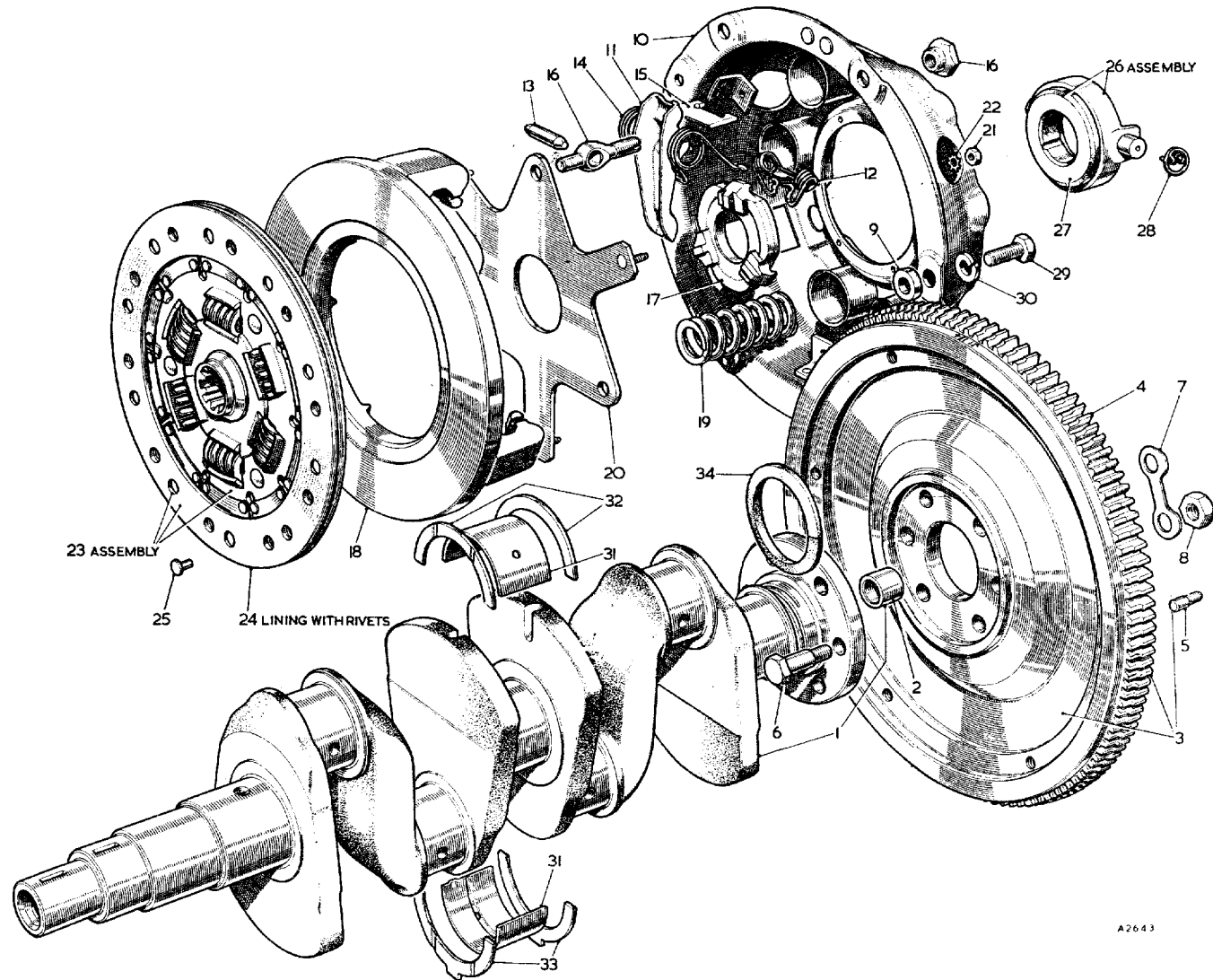


SERVICE PARTS LIST

THE M.G. Series MGA TWIN CAM

Item No.	DESCRIPTION	Commencing (E) 101		Qty. per Vehicle		Unit of Issue	Type of Vehicle	MODIFICATIONS			REMARKS
		Part Number	Illus. No.	RHD	LHD			New Part Number	Change Point	Amdt. No.	
	<b>ENGINE</b>										
	<b>ENGINE UNIT</b>										
1	Stripped engine ..... (R)	<b>AEH37</b>		1	1						
2	Half-engine .....	<b>AEH36</b>		1	1						
3	Block assembly—cylinder .....	<b>AEH35</b>	<b>A1</b>	1	1						
4	Plug for core hole .....	AEH592	A2	4	4						
5	Plug for oil gallery .....	1H813	A3	1	1						
6	Plug for oil filter boss .....	11G14	A4	1	1						
7	Plug for oil relief valve hole .....	6K899	A5	2	2						
8	Plug for crankcase oil hole (taper) .....	6K874	A6	2	2						
9	Plug for oil gallery .....	2K8623	A7	3	3						
10	Plug for oil hole (screwed) .....	2K4992	A8	1	1						
11	Washer for plug .....	6K638	A9	1	1	12					
12	Stud for cylinder head .....	AEH549	A10	10	10						
13	Stud for main bearing cap .....	51K894	A11	6	6						
14	Washer for stud (spring) .....	LWN208	A12	6	6						
15	Nut for stud .....	LNN208	A13	6	6						
16	Stud for oil pump .....	AEH601	A14	3	3						
17	Washer for stud (plain) .....	PWN105	A15	3	3	12					
18	Washer for stud (spring) .....	2K5319	A16	3	3						
19	Nut for stud .....	FNN105	A17	3	3						
20	Stud for tachometer drive housing .....	CLS2511	A18	2	2						
21	Washer for stud (plain) .....	PWZ105	A19	2	2						
22	Washer for stud (spring) .....	LWZ205	A20	2	2	24					
23	Nut for stud .....	FNZ105	A21	2	2						
24	Plate—blanking .....	1G2443	A22	1	1						
25	Joint for plate .....	1G2444	A23	1	1	12					
26	Stud for plate .....	53K257	A24	2	2						
27	Washer for stud (spring) .....	LWZ205	A25	2	2	24					
28	Nut for stud .....	FNZ105	A26	2	2						
29	Dowel for engine rear plate .....	1G752	A27	2	2						
30	Dowel for engine front plate .....	AEH307	A28	1	1						
31	Dowel for engine front plate and timing case .....	AEH308	A29	1	1						
32	<b>Tap—water drain</b> .....	<b>3H576</b>	<b>A30</b>	1	1						
33	Washer for tap .....	2K4954	A31	1	1	36					
34	Washer for tap .....	2K4975		1	1						] Alternatives
35	Liner for half-speed shaft .....	8G2176	A32	1	1						
36	Cap for main bearing (front) .....	N.S.P.	A33								
37	Cap for main bearing (centre) .....	N.S.P.	A34								
38	Cap for main bearing (rear) .....	N.S.P.	A35								
39	Joint for front and rear main bearing caps .....	1H353	A36	2	2	12					
40	<b>Piston assembly (standard)</b> .....	<b>AEH554</b>	<b>A37</b>	4	4						
							<b>AEH616</b>	<b>Com. (E) 446</b>			] For all replacements AEH673 must be used
							<b>AEH640</b>	<b>Com. (E) 606</b>			
							<b>AEH673</b>	<b>Com. (E) 2057</b>			
41	Ring—compression (chrome) .....	AEH556	A38	4	4						
42	Ring—compression (taper) .....	AEH557	A39	8	8						
43	Ring—scraper .....	AEH558	A40	4	4						
44	Ring—twin segment scraper .....			4	4						
							AEH615	Fin. (E) 445			] For all replacements AEH672 must be used
							AEH672	Com. (E) 446			
45	Pin—gudgeon .....	AEH441	A41	4	4						
46	Circlip .....	CCN214	A42	8	8						Correction. Was AEC785

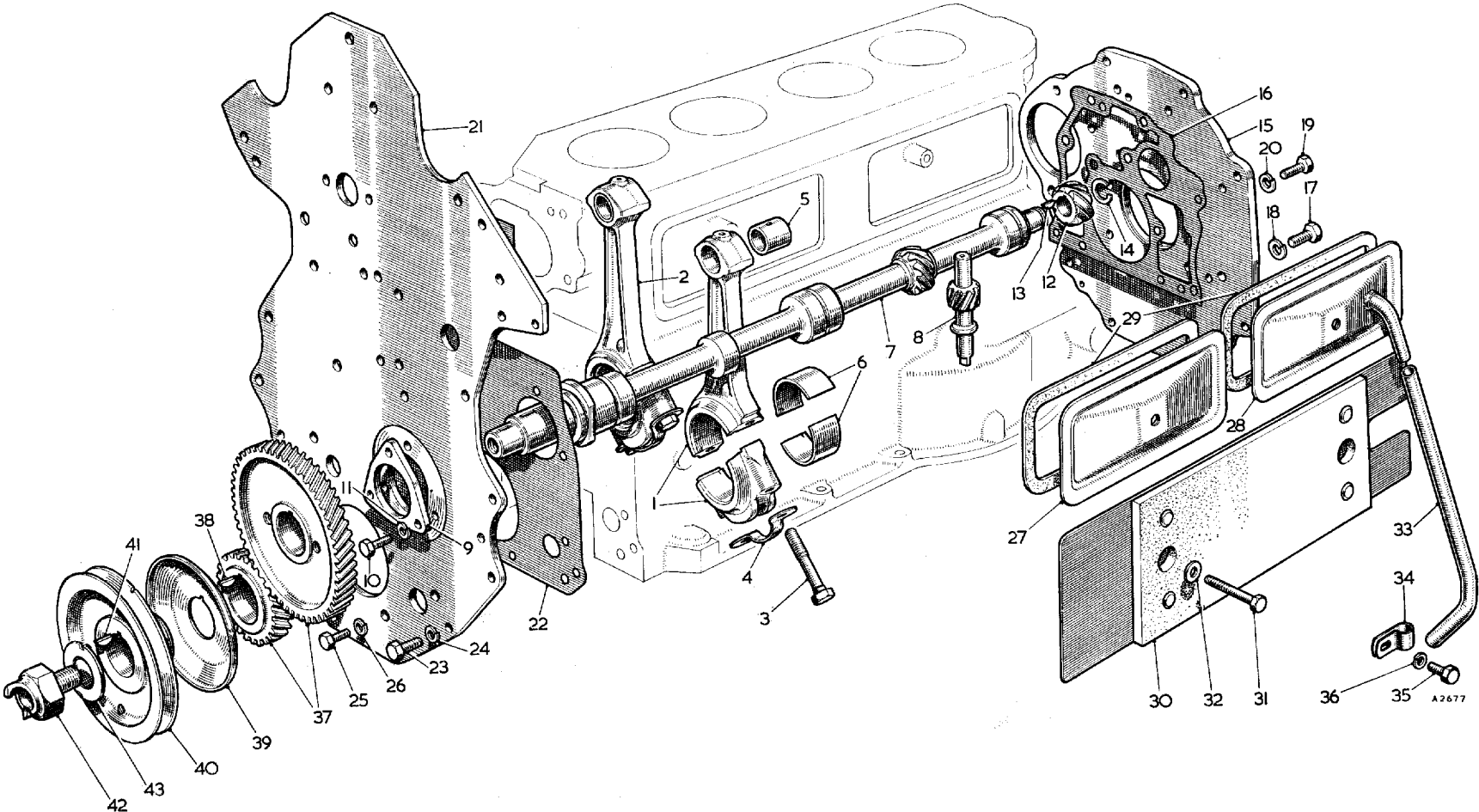


A2643

SERVICE PARTS LIST

THE M.G. Series MGA TWIN CAM

Item No.	DESCRIPTION	Commencing (E) 101		Qty. per Vehicle		Unit of Issue	Type of Vehicle	MODIFICATIONS			REMARKS
		Part Number	Illus. No.	RHD	LHD			New Part Number	Change Point	Amdt. No.	
	<b>CRANKSHAFT, FLYWHEEL, CLUTCH</b>										
1	<b>Crankshaft assembly with flywheel and clutch</b>	<b>AEH44</b>		<b>1</b>	<b>1</b>						
2	Crankshaft with bush	AEH424	AA1	1	1						
3	Bush for drive gear	1G765	AA2	1	1	.12					
4	<b>Flywheel complete (R)</b>	<b>AEH442</b>	<b>AA3</b>	<b>1</b>	<b>1</b>						
5	Ring—starter (Not U.K.)	1G2874	AA4	1	1						
6	Dowel—clutch to flywheel	AEH541	AA5	2	2						
7	Bolt—flywheel to crankshaft	51K1022	AA6	6	6						
8	Washer for bolt (lock)	6K26	AA7	3	3						
9	Nut for bolt	FNZ506	AA8	6	6						
10	<b>Clutch assembly</b>	<b>N.S.P.</b>									
11	Cover assembly—clutch	27H3248		1	1						
12	Washer—distance	AEH650	AA9	6	6						
13	Cover—clutch	N.S.P.	AA10								
14	Lever—release	27H3223	AA11	3	3						
15	Retainer for release lever	7H3001	AA12	3	3	.72					
16	Pin for release lever	7H3067	AA13	3	3	.12					
17	Spring (anti-rattle)	7H3171	AA14	3	3	.36					
18	Strut—release lever	7H3069	AA15	3	3						
19	Eyebolt and nut	27H3157	AA16	3	3						
20	Plate—release lever	7H3213	AA17	1	1	.12					
21	Plate—pressure	27H3224	AA18	1	1						
22	Spring for pressure plate	7H3169	AA19	6	6						
23	Spider assembly	27H3225	AA20	1	1						
24	Nut for spider rivet	17H7448	AA21	3	3						
25	Washer for nut (shakeproof)	AJD7604	AA22	3	3						
26	<b>Plate assembly—driven</b>	<b>27H3241</b>	<b>AA23</b>	<b>1</b>	<b>1</b>						
27	Lining and rivets	8G8349	AA24	1 set	1 set	1					Correction. Was 17H7568
28	Rivet	7H3078	AA25	22	22						
29	<b>Bearing assembly—release</b>	<b>7H3214</b>	<b>AA26</b>	<b>1</b>	<b>1</b>						
30	Bearing	7H3277	AA27	1	1						
31	Retainer—bearing	7H3048	AA28	2	2	.36					
32	Screw—clutch to flywheel	HNS0507	AA29	6	6						
33	Washer for screw (spring)	2K5319	AA30	6	6						
34	<b>Bearing—crankshaft main (standard)</b>	<b>8Q2257</b>	<b>AA31</b>	<b>1 set</b>	<b>1 set</b>	<b>1</b>					
35	Washer—thrust (upper)	1G2331	AA32	2	2	.12					
36	Washer—thrust (lower)	1G2332	AA33	2	2	.12					
37	Seal—crankshaft rear oil	AEH519	AA34	1	1						



**SERVICE PARTS LIST**

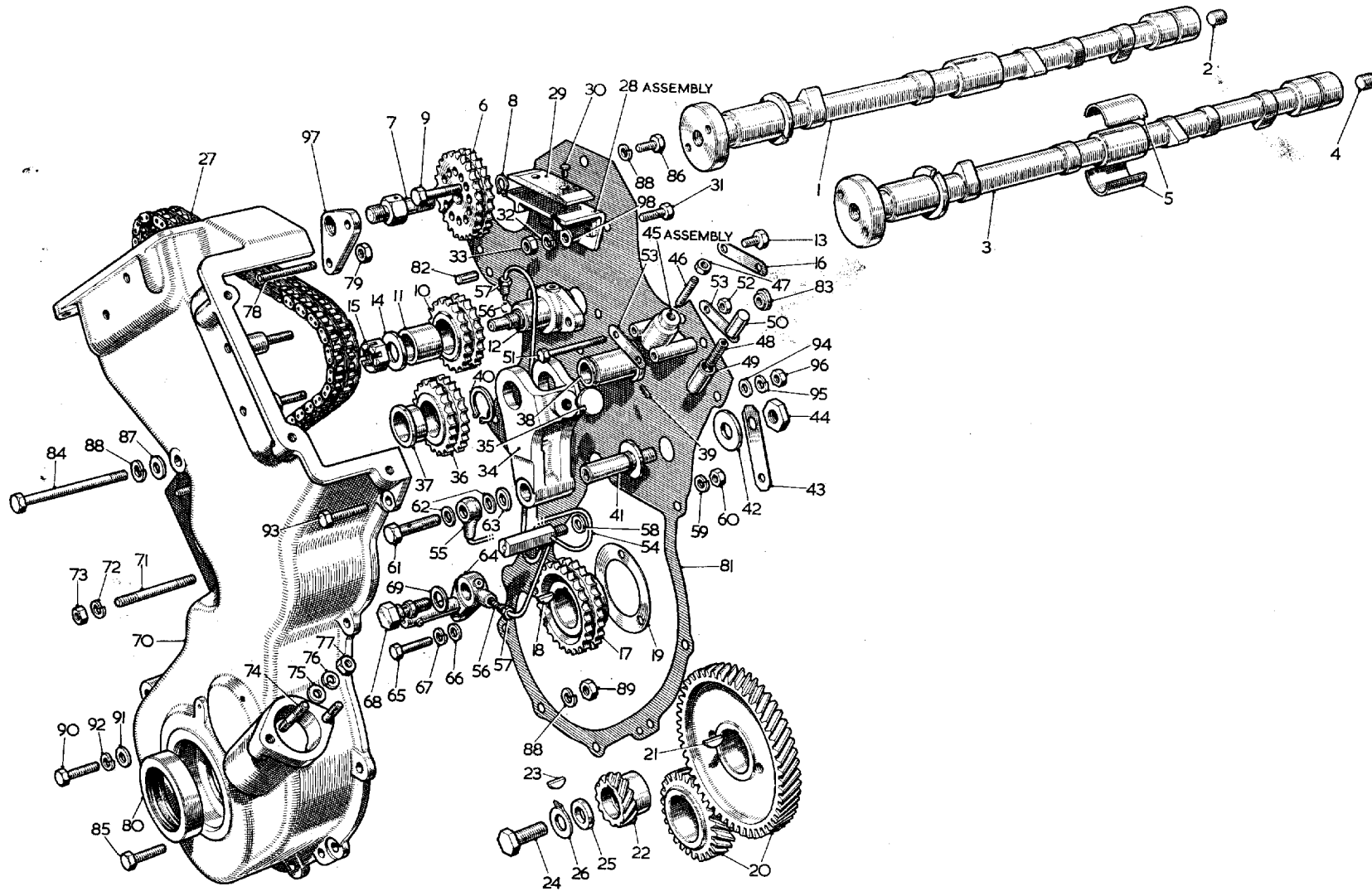
**THE M.G. Series MGA TWIN CAM**

Item No.	DESCRIPTION	Commencing (E) 101		Qty. per Vehicle		Unit of Issue	Type of Vehicle	MODIFICATIONS		REMARKS
		Part Number	Illus. No.	RHD	LHD			New Part Number	Change Point	
<b>CONNECTING RODS—BEARINGS</b>										
1	Connecting rod and cap +2 (Nos. 2 and 4 cylinders)	AJH5307	AB1	2	2					Replaces standard, +1, +2, +3, +4, +5 Replaces +6, +7, +8, +9, +10 Replaces +11, +12, +13, +14, +15, +16 Replaces 1, 2, 3, 4, 5 Replaces 6, 7, 8, 9, 10 Replaces 11, 12, 13, 14, 15, 16 Always use AEC882 in lieu of AEC797 prior to (E) 710 Always use AEH619 in lieu of AEH444 together with 1 off spindle AEH620 prior to (E) 313 Always use AEH620 in lieu of AEH459 together with 1 off shaft AEH619 prior to (E) 313
2	Connecting rod and cap +2 (Nos. 1 and 3 cylinders)	AJH5313	AB2	2	2					
3	Connecting rod and cap +7 (Nos. 2 and 4 cylinders)	AJH5308		2	2					
4	Connecting rod and cap +7 (Nos. 1 and 3 cylinders)	AJH5314		2	2					
5	Connecting rod and cap +13 (Nos. 2 and 4 cylinders)	AJH5309		2	2					
6	Connecting rod and cap +13 (Nos. 1 and 3 cylinders)	AJH5315		2	2			Fin. (E) 1342		
7	Connecting rod and cap 2 (Nos. 2 and 4 cylinders)	AJH5310		2	2					
8	Connecting rod and cap 2 (Nos. 1 and 3 cylinders)	AJH5316		2	2					
9	Connecting rod and cap 7 (Nos. 2 and 4 cylinders)	AJH5311		2	2					
10	Connecting rod and cap 7 (Nos. 1 and 3 cylinders)	AJH5317		2	2					
11	Connecting rod and cap 13 (Nos. 2 and 4 cylinders)	AJH5312		2	2					
12	Connecting rod and cap 13 (Nos. 1 and 3 cylinders)	AJH5318		2	2					
13	Connecting rod and cap (Nos. 2 and 4 cylinders)			2	2			AEH642		
14	Connecting rod and cap (Nos. 1 and 3 cylinders)			2	2			AEH644		
15	Bolt for cap	AEH435	AB3	8	8			AEH647	Com. (E) 1343	
16	Washer for bolt	6K881	AB4	4	4			AEH648		
17	Bush—small-end	AEC797	AB5	4	4			AEC882	Com. (E) 710	
18	Bearing for connecting rod—big-end (standard)	8G2259	AB6	1	1					
<b>HALF-SPEED SHAFT</b>										
19	Shaft—half-speed	AEH444	AB7	1	1			AEH619	Com. (E) 313	
20	Spindle—oil pump driving	AEH459	AB8	1	1			AEH620	Com. (E) 313	
21	Plate—locating	AEH608	AB9	1	1					
22	Screw—plate to crankcase	HNS0406	AB10	3	3					
23	Washer for screw (spring)	LWN204	AB11	3	3					
24	Gear—tachometer drive	AEH454	AB12	1	1					
25	Key for gear	WKN304	AB13	1	1					
26	Circlip for gear	1H605	AB14	1	1					
<b>ENGINE MOUNTING PLATE</b>										
27	Plate—engine mounting (rear)	AEH618	AB15	1	1					
28	Joint—plate to crankcase	1G2425	AB16	1	1	12				
29	Screw—plate to crankcase	HZS0607	AB17	8	8					
30	Washer for screw (spring)	LWZ206	AB18	8	8					
31	Screw—plate to crankcase	HZS0507	AB19	4	4					
32	Washer for screw (spring)	LWZ205	AB20	4	4	24				
33	Plate—engine mounting (front)	AEH318	AB21	1	1					
34	Joint—plate to crankcase	AEH319	AB22	1	1					
35	Screw—plate to crankcase	HNS0505	AB23	6	6					
36	Washer for screw (spring)	LWZ205	AB24	6	6	24				
37	Screw—plate to bearing cap	HNS0405	AB25	2	2					
38	Washer for screw (spring)	LWN204	AB26	2	2					

**SERVICE PARTS LIST**

**THE M.G. Series MGA TWIN CAM**

Item No.	DESCRIPTION	Commencing (E) 101		Qty. per Vehicle		Unit of Issue	Type of Vehicle	MODIFICATIONS			REMARKS
		Part Number	Illus. No.	RHD	LHD			New Part Number	Change Point	Amdt. No.	
<b>CYLINDER SIDE COVERS</b>											
1	Cover for cylinder side (front)	2A770	AB27	1	1						
2	Cover for cylinder side (rear)	1A2199	AB28	1	1						
3	Joint for cover	1A2203	AB29	2	2	12					
4	Heat shield	AEH584	AB30	1	1						
5	Screw—cover and heat shield to crankcase	HBZ0513	AB31	2	2						
6	Washer for screw (copper)	AEC461	AB32	2	2						
7	Pipe—vent	AEH543	AB33	1	1			AEH628	Com. (E) 657		Always supply AEH628 in lieu of AEH543 together with 1 off clip IG1309 prior to (E) 657
8	Clip for vent pipe	11G80	AB34	1	1			IG1309		Fin. (E) 656	
9	Bolt—clip to crankcase	HZS0505	AB35	1	1						
10	Washer for bolt (spring)	LWZ205	AB36	1	1	24					
<b>CRANKSHAFT GEAR—OIL THROWER PULLEY—STARTING NUT</b>											
11	Gear for crankshaft	AEH426		1	1						Always use AEH79—matched pair
12	Gears for crankshaft and half-speed shaft	AEH79	AB37	1 pr.	1 pr.	1					
13	Key for gear	2H326	AB38	1	1	12					
14	Thrower—oil	AEH427	AB39	1	1						
15	Pulley for crankshaft	AEH428	AB40	1	1						
16	Key for pulley	2H326	AB41	1	1						
17	Nut—starting	1H765	AB42	1	1						
18	Washer for nut (lock)	AEH429	AB43	1	1						



A2676



SERVICE PARTS LIST

THE M.G. Series MGA TWIN CAM

Item No.	DESCRIPTION	Commencing (E) 101		Qty. per Vehicle		Unit of Issue	Type of Vehicle	MODIFICATIONS			REMARKS
		Part Number	Illus. No.	RHD	LHD			New Part Number	Change Point	Amdt. No.	
	<b>CAMSHAFT—CAMSHAFT DRIVE</b>										
1	Camshaft—inlet	AEH579	AC1	1	1						
2	Plug	AEH408	AC2	1	1						
3	Camshaft—exhaust	AEH581	AC3	1	1						
4	Plug	AEH408	AC4	1	1						
5	Bearing for camshaft	8G2261	AC5	1	1						
6	Sprocket for camshaft	AEH411	AC6	2	2						
7	Spindle for sprocket	AEH412	AC7	2	2						
8	Circlip for spindle	CCN108	AC8	2	2						
9	Bolt for sprocket	AEH413	AC9	4	4						
10	Sprocket—chain idler	AEH336	AC10	1	1						
11	Bush	N.S.P.	AC11	1	1						
12	Hub for sprocket	AEH25	AC12	1	1						
13	Screw—hub to engine front plate	HZS0505	AC13	2	2						
14	Washer for sprocket (thrust)	AEH339	AC14	1	1						
15	Nut for sprocket	AEH340	AC15	1	1						
16	Washer for screw (tab)	AEH341	AC16	1	1						
17	Chain wheel—half-speed shaft	AEH448	AC17	1	1						
18	Key for chain wheel	WKN505	AC18	1	1						
19	Shim for half-speed shaft (.002")	AEH446	AC19	A/R	A/R						
20	Shim for half-speed shaft (.003")	AEH447		A/R	A/R						
21	Gear—half-speed shaft	AEH449		1	1						Always use AEH79— matched pair
22	Gears for crankshaft and half-speed shaft	AEH79	AC20	1 pr.	1 pr.	1					
23	Key for gear	WKN505	AC21	1	1						
24	Gear—distributor drive	AEH450	AC22	1	1						
25	Key for gear	WKN304	AC23	1	1						
26	Bolt for half-speed shaft	AEH451	AC24	1	1						
27	Washer for bolt	AEH452	AC25	1	1						
28	Washer for bolt (lock)	AEH453	AC26	1	1						
29	Chain for camshaft drive	AEH372	AC27	1	1						
30	Bracket assembly—chain vibration damper	AEH332	AC28	2	2						
31	Damper	AEH334	AC29	2	2						
32	Rivet for damper	CRS0207	AC30	4	4						
33	Screw—damper bracket to engine front plate	HZS0506	AC31	4	4						
34	Washer for screw	AEC398	AC32	4	4						
35	Washer for screw (spring)	LWZ205	AC32	4	4	24					
36	Nut for screw	FNZ105	AC33	4	4						
37	Fork—chain adjuster	AEH344	AC34	1	1						
38	Pad—thrust	AEH346	AC35	1	1						
39	Sprocket—chain adjuster fork	AEH347	AC36	1	1						
40	Bush	N.S.P.	AC37	2	2						
41	Hub for sprocket	AEH349	AC38	1	1						
42	Peg—locating	AEH540	AC39	1	1						
43	Circlip for hub	CCN118	AC40	1	1						
44	Pivot—chain adjuster fork	AEH342	AC41	1	1						
45	Washer for pivot (plain)	PWZ208	AC42	1	1						
46	Washer for pivot (tab)	AEH343	AC43	1	1						
47	Nut for pivot	FNZ208	AC44	1	1			AEH623	Com. (E) 329		Always supply AEH623 prior to (E) 329

**SERVICE PARTS LIST**

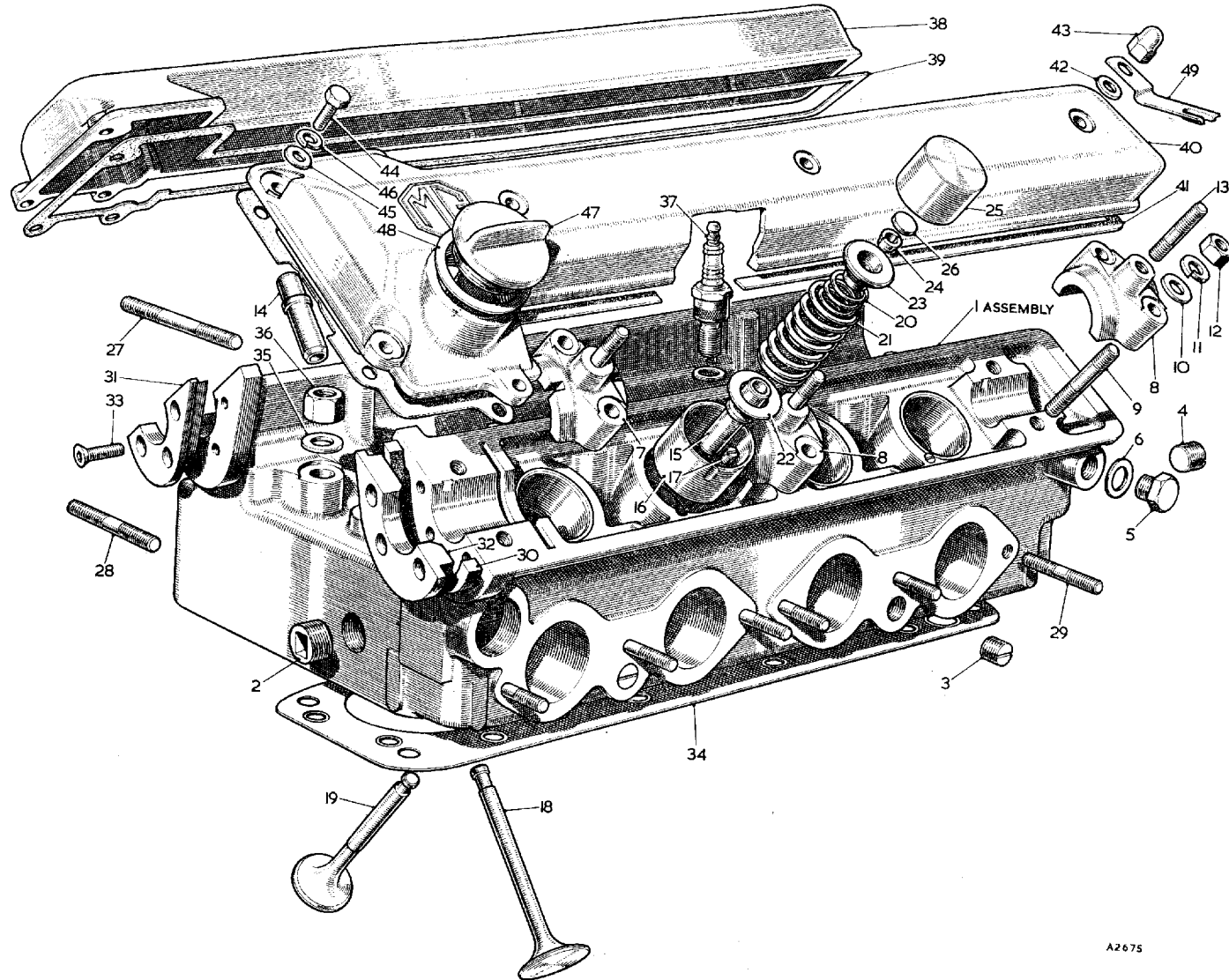
**THE M.G. Series MGA TWIN CAM**

Item No.	DESCRIPTION	Commencing (E) 101		Qty. per Vehicle		Unit of Issue	Type of Vehicle	MODIFICATIONS			REMARKS
		Part Number	Illus. No.	RHD	LHD			New Part Number	Change Point	Amdt. No.	
	<b>Camshaft—Camshaft Drive—continued</b>										
	<b>Adjuster—chain</b>	<b>AEH27</b>	<b>AC45</b>	<b>1</b>	<b>1</b>						
1	Screw	AEH362	AC46	1	1						
2	Nut for screw (lock)	51K1712	AC47	1	1						
3	Spring	AEH561	AC48	1	1						
4	Thimble	AEH368	AC49	1	1						
5	Plunger	AEH369	AC50	1	1						
6	Bolt—adjuster to engine front plate	AEH370	AC51	2	2						
7	Nut for bolt	FNZ104	AC52	2	2						
8	Washer for bolt (tab)	AEH371	AC53	2	2						
9	<b>Pipe assembly—oil feed</b>	<b>AEH351</b>	<b>AC54</b>	<b>1</b>	<b>1</b>						
10	Banjo	N.S.P.	AC55	1	1						Correction. Was AEH352
11	Olive	6K649	AC56	2	2						
12	Nut for olive	2A459	AC57	2	2						
13	Joint for oil feed pipe pillar	6K4973	AC58	1	1						
14	Washer for oil feed pipe pillar (spring)	LWZ205	AC59	1	1	24.					
15	Nut for oil feed pipe pillar	FNZ105	AC60	1	1						
16	Bolt—oil feed pipe to adjuster fork pivot (banjo)	AEH359	AC61	1	1						
17	Washer for banjo bolt	AEC346	AC62	2	2						
18	Washer for adjuster fork pivot	AEH515	AC63	1	1						
19	Bracket for oil feed pipe	AEH357	AC64	1	1						
20	Screw—bracket to crankcase	HNS0409	AC65	1	1						
21	Washer for screw (plain)	PWN104	AC66	1	1						
22	Washer for screw (spring)	LWN204	AC67	1	1						
23	Bolt—bracket to crankcase (banjo)	AEH360	AC68	1	1						
24	Washer for banjo bolt	AEH520	AC69	1	1						
25	<b>Case—front timing</b>	<b>AEH28</b>	<b>AC70</b>	<b>1</b>	<b>1</b>						
26	Stud for water pump	CHS0520	AC71	3	3						
27	Washer for stud (spring)	LWZ205	AC72	3	3	24.					
28	Nut for stud	FNZ105	AC73	3	3						
29	Stud for distributor drive housing	CLS2511	AC74	2	2						
30	Washer for stud (plain)	PWZ105	AC75	2	2						
31	Washer for stud (spring)	LWZ205	AC76	2	2	24.					
32	Nut for stud	FNZ105	AC77	2	2						
33	Stud—camshaft sprocket support plate	AEH375	AC78	4	4						
34	Nut for stud	FNN105	AC79	4	4						
35	Oil seal	AEJ5	AC80	1	1						
36	Joint—timing case to engine front plate	AEH377	AC81	1	1						
37	Dowel—timing case to engine front plate	AEH307	AC82	1	1						
38	Clinch nut—timing case to engine front plate	AEH320	AC83	2	2						
39	Bolt—timing case to engine front plate	AEH378	AC84	1	1						
40											

**SERVICE PARTS LIST**

**THE M.G. Series MGA TWIN CAM**

Item No.	DESCRIPTION	Commencing (E) 101		Qty. per Vehicle		Unit of Issue	Type of Vehicle	MODIFICATIONS			REMARKS
		Part Number	Illus. No.	RHD	LHD			New Part Number	Change Point	Amdt. No.	
	<b>Camshaft—Camshaft Drive—continued</b>										
1	Screw—timing case to engine front plate (1" long) .....	HZS0508	AC85	5	5						
2	Screw—timing case to engine front plate (7/8" long) .....	ZCS0507	AC86	2/1	2/1						Quantity reduced at (E) 556
3	Bolt—cable clamp and timing case to engine front plate .....			1	1			HCZ0514	Com. (E) 556		
4	Washer for bolt and screw (plain) .....	PWZ105	AC87	7	7						
5	Washer for bolt and screw (spring) .....	LWZ205	AC88	8	8	24					
6	Nut for screw .....	FNZ105	AC89	5	5						
7	Bolt—timing case to engine front plate and crankcase (1 1/8" long) .....	HBZ0509	AC90	3	3						
8	Washer for bolt (plain) .....	PWZ105	AC91	3	3						
9	Washer for bolt (spring) .....	LWZ205	AC92	3	3	24					
10	Bolt—timing case and thermostat housing to front plate (1 1/4" long) .....	HBZ0510	AC93	1	1						
11	Washer for bolt (plain) .....	PWZ105	AC94	1	1						
12	Washer for bolt (spring) .....	LWZ205	AC95	1	1	24					
13	Nut for bolt .....	FNZ105	AC96	1	1						
14	<b>Plate—camshaft sprocket support</b>	<b>AEH376</b>	<b>AC97</b>	<b>2</b>	<b>2</b>						



A2675

**SERVICE PARTS LIST**

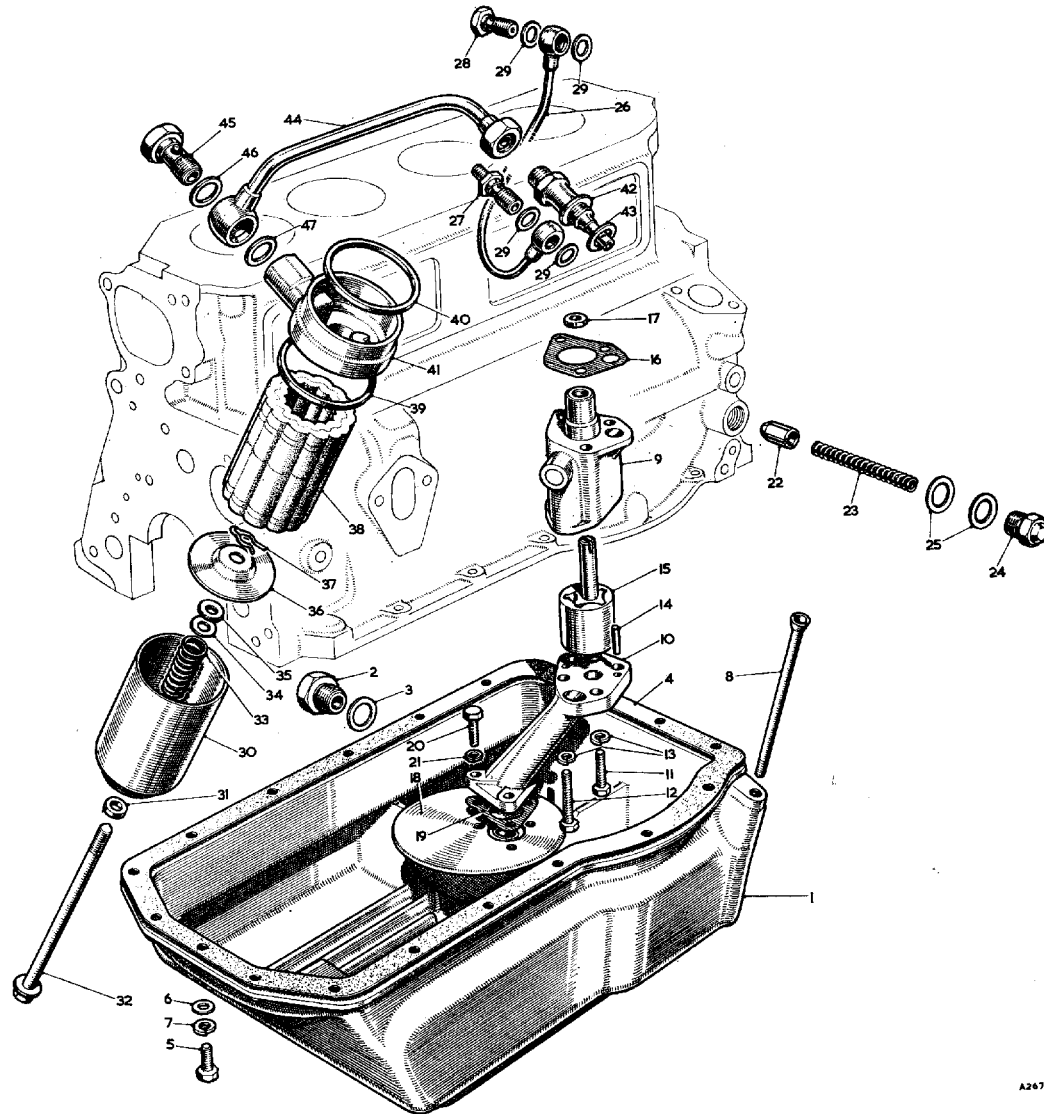
**THE M.G. Series MGA TWIN CAM**

Item No.	DESCRIPTION	Commencing (E) 101		Qty. per Vehicle		Unit of Issue	Type of Vehicle	MODIFICATIONS			REMARKS
		Part Number	Illus. No.	RHD	LHD			New Part Number	Change Point	Amdt. No.	
	<b>CYLINDER HEAD—VALVES—GUIDES—SPRINGS—TAPPETS</b>										
1	Cylinder head with valve assembly	<b>AEH39</b>		1	1						
2	Cylinder head with valve guides—assembly	<b>AEH29</b>	<b>AD1</b>	1	1						
3	Plug for core hole (screwed)	6K499	AD2	5	5						
4	Plug for core hole (screwed)	AEH388	AD3	5	5						
5	Plug for core hole (screwed)	AEH606	AD4	1	1						
6	Plug for oil gallery (screwed)	2K4991	AD5	1	1						
7	Washer for plug (copper)	AEC343	AD6	1	1						
8	Cap for camshaft bearing (front)	N.S.P.	AD7								
9	Cap for camshaft bearing (centre and rear)	N.S.P.	AD8								
10	Stud for bearing cap	AEH390	AD9	12	12						
11	Washer for stud (plain)	PWN106	AD10	12	12						
12	Washer for stud (spring)	LWN206	AD11	12	12						
13	Nut for stud	FNN106	AD12	12	12						
14	Stud—bearing cap to top cover	CLS0512	AD13	6	6						
15	Guide—inlet valve	AEH386	AD14	4	4						
16	Guide—exhaust valve	AEH387	AD15	4	4						
17	Bush—tappet		AD16	8	8			N.S.P.	] Com. (E) 1587		
18	Plug (screwed)		AD17	8	8			N.S.P.			
19	<b>Valve—inlet</b>	<b>AEH394</b>	<b>AD18</b>	4	4						
20	<b>Valve—exhaust</b>	<b>AEH571</b>	<b>AD19</b>	4	4						
21	Spring for valve (inner)	AEH562	AD20	8	8						
22	Spring for valve (outer)	AEH563	AD21	8	8						
23	Washer for spring (thrust)	AEH396	AD22	8	8						
24	Clip for spring	AEH564	AD23	8	8						
25	Retainer for spring (half)	AEH521	AD24	16	16						
26	<b>Tappet</b>	<b>AEH401</b>	<b>AD25</b>	8	8			<b>AEH651</b>	<b>Com. (E) 1087</b>		<b>Always supply 8 off AEH651 prior to (E) 1087</b>
27	Shim—tappet adjustment (.086")	AEH400	AD26	A/R	A/R						Identification No. 1
28	Shim—tappet adjustment (.088")	AEH040002		A/R	A/R						Identification No. 2
29	Shim—tappet adjustment (.090")	AEH040004		A/R	A/R						Identification No. 3
30	Shim—tappet adjustment (.092")	AEH040006		A/R	A/R						Identification No. 4
31	Shim—tappet adjustment (.094")	AEH040008		A/R	A/R						Identification No. 5
32	Shim—tappet adjustment (.096")	AEH040010		A/R	A/R						Identification No. 6
33	Shim—tappet adjustment (.098")	AEH040012		A/R	A/R						Identification No. 7
34	Shim—tappet adjustment (.100")	AEH040014		A/R	A/R						Identification No. 8
35	Shim—tappet adjustment (.102")	AEH040016		A/R	A/R						Identification No. 9
36	Shim—tappet adjustment (.104")	AEH040018		A/R	A/R						Identification No. 10
37	Shim—tappet adjustment (.106")	AEH040020		A/R	A/R						Identification No. 11
38	Shim—tappet adjustment (.108")	AEH040022		A/R	A/R						Identification No. 12
39	Shim—tappet adjustment (.110")	AEH040024		A/R	A/R						Identification No. 13
40	Shim—tappet adjustment (.112")	AEH040026		A/R	A/R						Identification No. 14
41	Shim—tappet adjustment (.114")	AEH040028		A/R	A/R						Identification No. 15
42	Shim—tappet adjustment (.116")	AEH040030		A/R	A/R						Identification No. 16

**SERVICE PARTS LIST**

**THE M.G. Series MGA TWIN CAM**

Item No.	DESCRIPTION	Commencing (E) 101		Qty. per Vehicle		Unit of Issue	Type of Vehicle	MODIFICATIONS			REMARKS
		Part Number	Illus. No.	RHD	LHD			New Part Number	Change Point	Amdt. No.	
	<b>Cylinder Head—Valves—Guides—Springs—Tappets—continued</b>										
1	Stud for inlet manifold	AEH588	AD27	2	2						
2	Stud for inlet manifold	CLS2613	AD28	5	5						
3	Stud for exhaust manifold	CHS2513	AD29	6	6						
4	Oil seal	AEH404	AD30	2	2						
5	Housing for oil seal (inlet)	AEH402	AD31	1	1						
6	Housing for oil seal (exhaust)	AEH403	AD32	1	1						
7	Screw for housing	AEJ3	AD33	6	6						
8	Joint for cylinder head	AEH548	AD34	1	1						
9	Washer—cylinder head stud (plain)	AEH632	AD35	10	10						
10	Nut—cylinder head stud	AEC139	AD36	10	10						
11	<b>Plug—sparking</b>	<b>97H611</b>	<b>AD37</b>	<b>4</b>	<b>4</b>						
	<b>CYLINDER HEAD COVERS—OIL FILLER—OIL INDICATOR BRACKET</b>										
12	<b>Cover—cylinder head top (inlet)</b>	<b>AEH414</b>	<b>AD38</b>	<b>1</b>	<b>1</b>						
13	Joint for inlet cover	AEH415	AD39	1	1						
14	<b>Cover—cylinder head top (exhaust)</b>	<b>AEH416</b>	<b>AD40</b>	<b>1</b>	<b>1</b>						
15	Joint for exhaust cover	AEH417	AD41	1	1						
16	Washer—cover stud (copper)	AEC398	AD42	6	6						
17	Nut for cover stud (cap)	AEH418	AD43	6	6						
18	Screw—cover to timing case	ZCS0509	AD44	6/4	6/4						
19	Bolt—clip and cover to timing case			2	2						
20	Washer for screw (plain)	PWZ105	AD45	6	6			HCZ0510	Com. (E) 556		Quantity reduced at (E) 556
21	Washer for screw (spring)	LWZ205	AD46	6	6	24					
22	<b>Cap—oil filler</b>	<b>AEH419</b>	<b>AD47</b>	<b>1</b>	<b>1</b>						
23	Washer for filler cap	AEH420	AD48	1	1						
24	<b>Bracket—oil indicator steady</b>	<b>AEH570</b>	<b>AD49</b>	<b>1</b>	<b>1</b>						



**SERVICE PARTS LIST**

**THE M.G. Series MGA TWIN CAM**

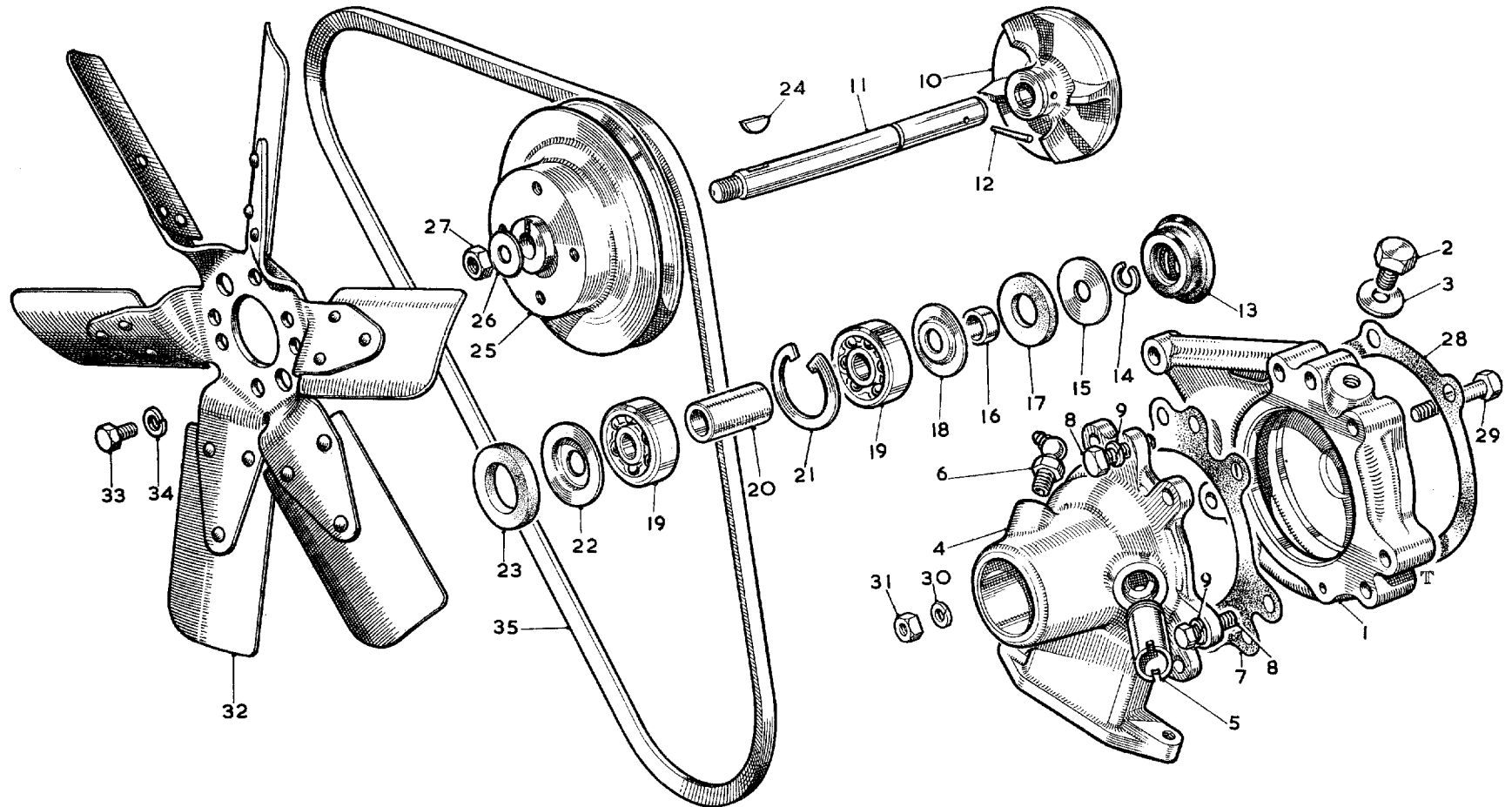
Item No.	DESCRIPTION	Commencing (E) 101		Qty. per Vehicle		Unit of Issue	Type of Vehicle	MODIFICATIONS			REMARKS
		Part Number	Illus. No.	RHD	LHD			New Part Number	Change Point	Amdt. No.	
<b>SUMP—OIL LEVEL INDICATOR TUBE</b>											
1	<b>Sump—oil</b>	<b>AEH315</b>	<b>AE1</b>	1	1						
2	Plug for sump—drain	2H4685	AE2	1	1						
3	Washer for plug (copper)	6K431	AE3	1	1						
4	Joint—sump to crankcase	1G2290	AE4	1	1	12					
5	Screw—sump to crankcase	HZS0407	AE5	19	19						
6	Washer for screw (plain)	PWZ104	AE6	19	19	12					
7	Washer for screw (spring)	LWZ204	AE7	19	19	12					
8	<b>Tube—oil level indicator</b>	<b>AEH536</b>	<b>AE8</b>	1	1						
<b>OIL PUMP—OIL RELEASE VALVE—OIL FEED PIPE</b>											
<b>Pump assembly—oil</b>											
9	Body (with plug)	1H1191		1	1						
10	Cover	7H1790	AE9	1	1						
11	Screw for cover (short)	17H1712	AE10	1	1						
12	Screw for cover (long)	HZS0408	AE11	1	1						
13	Washer for screw (spring)	HZS0414	AE12	1	1						
14	Dowel	LWN204	AE13	2	2						
15	Shaft with rotors—driving	7H1793	AE14	2	2						
16	Joint—pump to crankcase	7H1792	AE15	1	1						
17	Washer for spindle (thrust)	11G10	AE16	1	1	12					
18	<b>Strainer assembly—oil</b>	AEH460	AE17	1	1						
19	Joint—strainer to pump	1H1192	AE18	1	1						
20	Screw—strainer to pump	1H1198	AE19	1	1						
21	Washer for screw (spring)	HNS0406	AE20	3	3		HNS0407	Com. (E) 499			Always use HNS0407 prior to (E) 499
22	<b>Valve—oil release</b>	LWN304	AE21	3	3						
23	Spring for valve	1G1452	AE22	1	1						
24	Cap nut for valve	1H756	AE23	1	1						
25	Washer for cap nut	1A2206	AE24	1	1						
26	<b>Pipe—oil feed (crankcase to cylinder head)</b>	2K4982	AE25	2	2						
27	Banjo bolt for pipe (crankcase end)	<b>AEH310</b>	<b>AE26</b>	1	1						
28	Banjo bolt for pipe (cylinder head end)	AEH313	AE27	1	1						
29	Washer for banjo bolt	AEH602	AE28	1	1						
30		6K500	AE29	4	4						
<b>OIL FILTER (EXTERNAL)</b>											
31	<b>Filter—oil</b>	<b>1H1067</b>		1	1						
32	Body assembly	1H1069	AE30	1	1						
33	Washer—sealing (bottom)	7H1948	AE31	1	1						
34	Bolt—centre	7H1965	AE32	1	1						
35	Spring	7H1764	AE33	1	1						
36	Washer (steel)	7H1969	AE34	1	1						
37	Washer (felt)	7H1968	AE35	1	1						



**SERVICE PARTS LIST**

**THE M.G. Series MGA TWIN CAM**

Item No.	DESCRIPTION	Commencing (E) 101		Qty. per Vehicle		Unit of Issue	Type of Vehicle	MODIFICATIONS			REMARKS
		Part Number	Illus. No.	RHD	LHD			New Part Number	Change Point	Amdt. No.	
	<b>Oil Filter (External)—continued</b>										
1	Plate—pressure .....	17H846	AE36	.1	.1						
2	Circlip .....	7H1952	AE37	.1	.1						
3	Element .....	8G683	AE38	.1	.1						
4	Seal—body to head .....	8G619	AE39	.1	.1	.12					
5	Seal—head to crankcase .....	8G619	AE40	.1	.1	.12					
6	Head assembly .....	1H1068	AE41	.1	.1						
7	<b>Adaptor—oil filter connection</b> .....	<b>1H922</b>	<b>AE42</b>	.1	.1						
8	Joint for adaptor (copper) .....	6K501	AE43	.1	.1						
9	<b>Pipe assembly—filter to crankcase</b> .....	<b>AEH598</b>	<b>AE44</b>	.1	.1						
10	Screw—pipe banjo union to crankcase .....	1K2142	AE45	.1	.1						
11	Washer for screw—outer (copper) .....	1H898	AE46	.1	.1						
12	Washer for screw—inner (copper) .....	6K501	AE47	.1	.1						

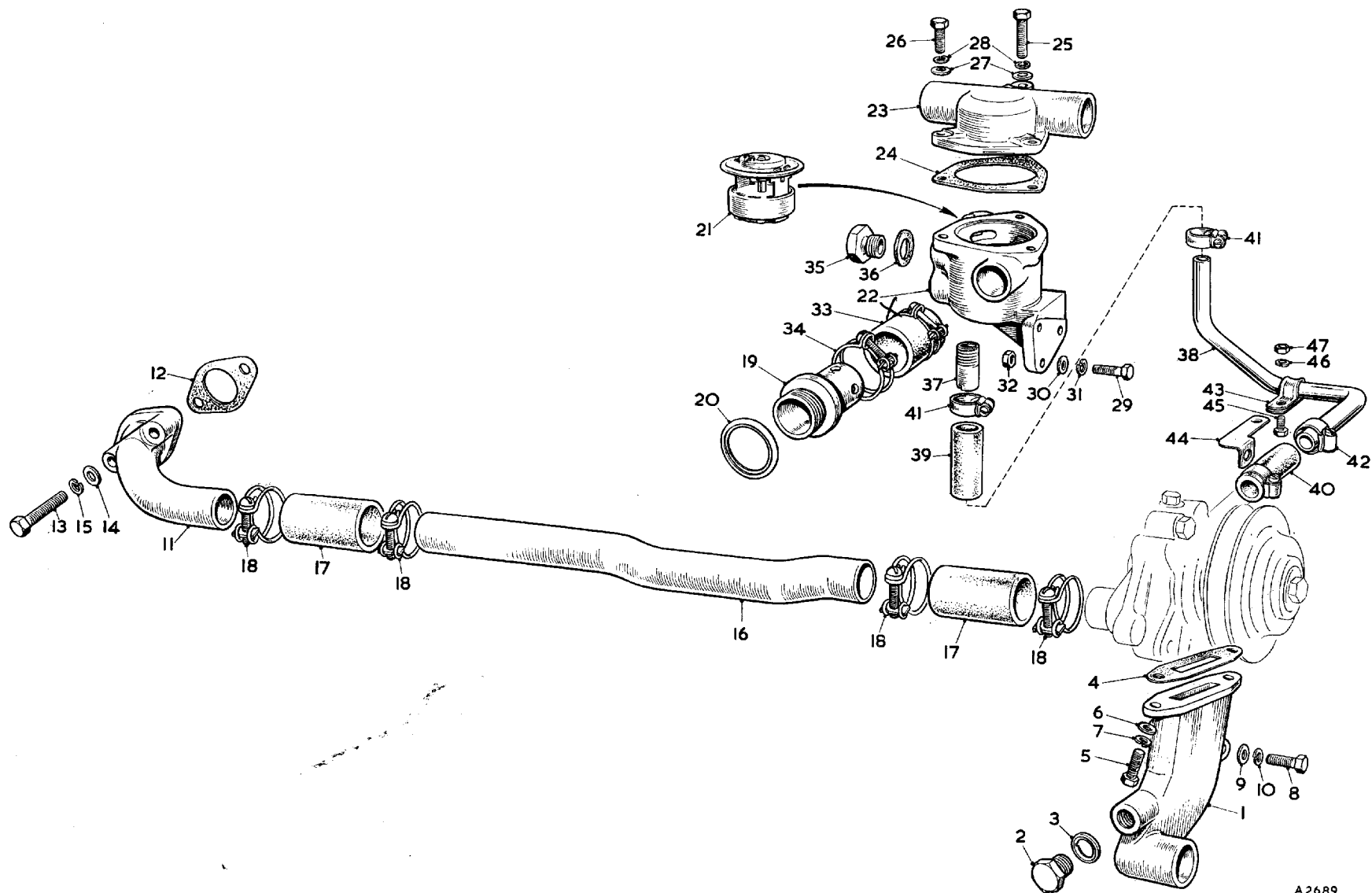


AO296A

**SERVICE PARTS LIST**

**THE M.G. Series MGA TWIN CAM**

Item No.	DESCRIPTION	Commencing (E) 101		Qty. per Vehicle		Unit of Issue	Type of Vehicle	MODIFICATIONS			REMARKS
		Part Number	Illus. No.	RHD	LHD			New Part Number	Change Point	Amdt. No.	
	<b>WATER PUMP—FAN PULLEY</b>										
1	<b>Pump assembly—water</b> ..... (R)	<b>AEH461</b>		<b>1</b>	<b>1</b>						
2	Scroll	AEH553	AF1	1	1						
3	Plug for scroll	ADP605	AF2	1	1						
4	Washer for plug (fibre)	6K705	AF3	1	1						
5	Body	AEH464	AF4	1	1						
6	Connection—by-pass	AEH470	AF5	1	1						
7	Greaser	UHN305	AF6	1	1						
8	Joint—scroll to body	AEH463	AF7	1	1						
9	Screw—body to scroll	HZS0508	AF8	2	2						
10	Washer for screw (spring)	LWZ205	AF9	2	2	24					
11	Vane	AEH466	AF10	1	1						
12	Spindle	AEH465	AF11	1	1						
13	Pin—vane to spindle (taper)	TPS0508	AF12	1	1						
14	Seal	AEB156	AF13	1	1						
15	Circlip for spindle	AEB151	AF14	1	1						
16	Cover—dust (plain)	AEH525	AF15	1	1						
17	Collar for spindle	AEH523	AF16	1	1						
18	Washer (felt)	AEH524	AF17	1	1						
19	Cover—dust (dished)	AEH526	AF18	1	1						
20	Bearing	AEF136	AF19	2	2						
21	Tube—bearing distance	AEH467	AF20	1	1						
22	Circlip for bearing	AEH529	AF21	1	1						
23	Cover—dust—spindle (dished)	AEH527	AF22	1	1						
24	Washer for spindle (felt)	AEH528	AF23	1	1						
25	Key for pulley	WKN404	AF24	1	1						
26	<b>Pulley</b>	<b>AEH472</b>	<b>AF25</b>	<b>1</b>	<b>1</b>						
27	Washer for spindle nut (lock)	AEH530	AF26	1	1						
28	Nut for spindle	FNZ105	AF27	1	1						
29	Joint—pump to timing case	AEH471	AF28	1	1						
30	Bolt—pump to engine front plate	HBZ0522	AF29	1	1						
31	Washer for bolt (spring)	LWZ205	AF30	1	1	24					
32	Nut for bolt	FNZ105	AF31	1	1						

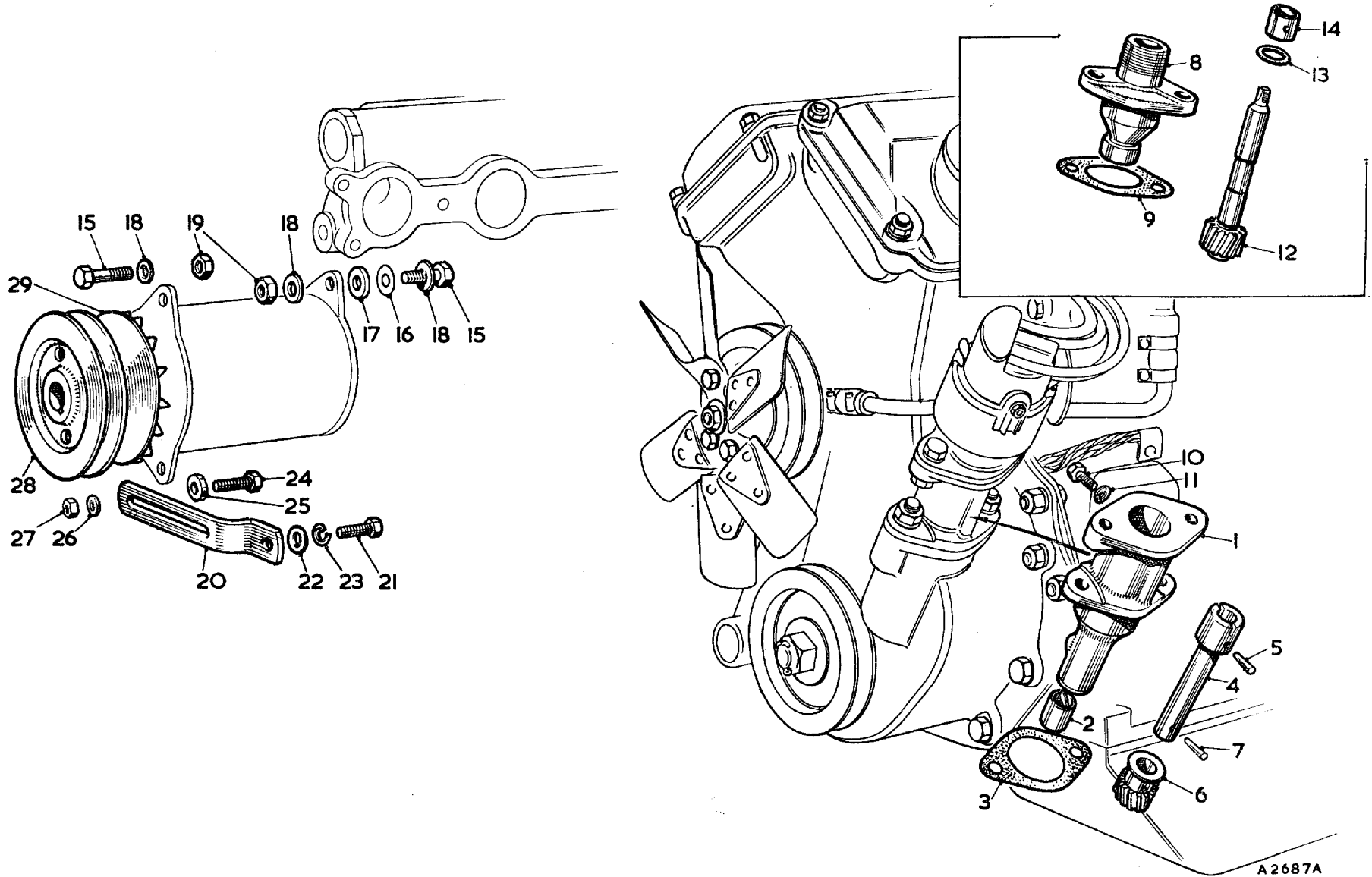


A2689

**SERVICE PARTS LIST**

**THE M.G. Series MGA TWIN CAM**

Item No.	DESCRIPTION	Commencing (E) 101		Qty. per Vehicle		Unit of Issue	Type of Vehicle	MODIFICATIONS			REMARKS
		Part Number	Illus. No.	RHD	LHD			New Part Number	Change Point	Amdt. No.	
	<b>WATER PIPES—THERMOSTAT</b>										
1	Pipe—water inlet	<b>AEH469</b>	<b>AG1</b>	1	1						
2	Plug for pipe	2K8982	AG2	1	1						] Not required when heater is fitted
3	Washer for plug (copper)	51K3811	AG3	1	1						
4	Joint—pipe to water pump	AEH468	AG4	1	1						
5	Screw—pipe to water pump	HZS0508	AG5	2	2						
6	Washer for screw (plain)	PWZ105	AG6	2	2						
7	Washer for screw (spring)	LWZ205	AG7	2	2	24					
8	Bolt—pipe to timing case	ZCS0508	AG8	1	1						
9	Washer for bolt (plain)	PWZ105	AG9	1	1						
10	Washer for bolt (spring)	LWZ205	AG10	1	1	24					
11	<b>Elbow—water inlet</b>	<b>AEH422</b>	<b>AG11</b>	1	1			<b>AEH631</b>	<b>Com. (E) 581</b>		
12	Joint—elbow to cylinder head	AEH423	AG12	1	1						
13	Bolt—elbow to cylinder head	HCZ0513	AG13	2	2						
14	Washer for bolt (plain)	PWZ105	AG14	2	2						
15	Washer for bolt (spring)	LWZ205	AG15	2	2	24					
16	<b>Pipe—pump to elbow</b>	<b>AEH421</b>	<b>AG16</b>	1	1			<b>AEH630</b>	<b>Com. (E) 574</b>		
17	Hose for pipe	AEH522	AG17	2	2						
18	Clip for hose	8G632	AG18	4	4						
19	<b>Pipe—water outlet</b>	<b>AEH393</b>	<b>AG19</b>	1	1						
20	Washer—pipe to cylinder head (copper)	AEJ4	AG20	1	1						
21	<b>Thermostat</b>	<b>11G291</b>	<b>AG21</b>	1	1			<b>AEJ14</b>	<b>Com. (E) 194</b>		<b>Always use AEJ14 prior to (E) 194</b>
22	Housing—thermostat	AEH477	AG22	1	1						
23	Cover for thermostat housing	AEH479	AG23	1	1						
24	Joint for cover	AEH478	AG24	1	1						
25	Bolt for cover	HCZ0414	AG25	1	1						
26	Screw for cover	ZCS0407	AG26	2	2						
27	Washer for bolt and screw (plain)	PWZ104	AG27	3	3	12					
28	Washer for bolt and screw (spring)	LWZ204	AG28	3	3	12					
29	Screw—housing to engine front plate	HZS0508	AG29	2	2						
30	Washer for screw (plain)	PWZ105	AG30	2	2						
31	Washer for screw (spring)	LWZ205	AG31	2	2	24					
32	Nut for screw	FNZ105	AG32	2	2						
33	<b>Hose—housing to water outlet pipe</b>	<b>AEH480</b>	<b>AG33</b>	1	1						
34	Clip for hose	8G632	AG34	2	2						
35	Plug—thermostat housing	ADP610	AG35	1	1						Correction. Was 2H3705
36	Washer for plug	2K7498	AG36	1	1						] Not required when heater is fitted
37	<b>Pipe—by-pass—thermostat housing</b>	<b>AEH483</b>	<b>AG37</b>	1	1						
38	<b>Pipe—by-pass—housing to water pump</b>	<b>AEH491</b>	<b>AG38</b>	1	1						
39	Hose for pipe—thermostat end	AEH493	AG39	1	1						
40	Hose for pipe—water pump end	AEH494	AG40	1	1						
41	Clip for hose—thermostat end	8G518	AG41	2	2						
42	Clip for hose—water pump end	2H3420	AG42	2	2						Correction. Was 2H3920
43	Clip for by-pass pipe	PCR1009	AG43	1	1						
44	Bracket for clip	AEH492	AG44	1	1						
45	Screw—clip to bracket	HZS0404	AG45	1	1						
46	Washer for screw (spring)	LWZ204	AG46	1	1	12					
47	Nut for screw	FNZ104	AG47	1	1						

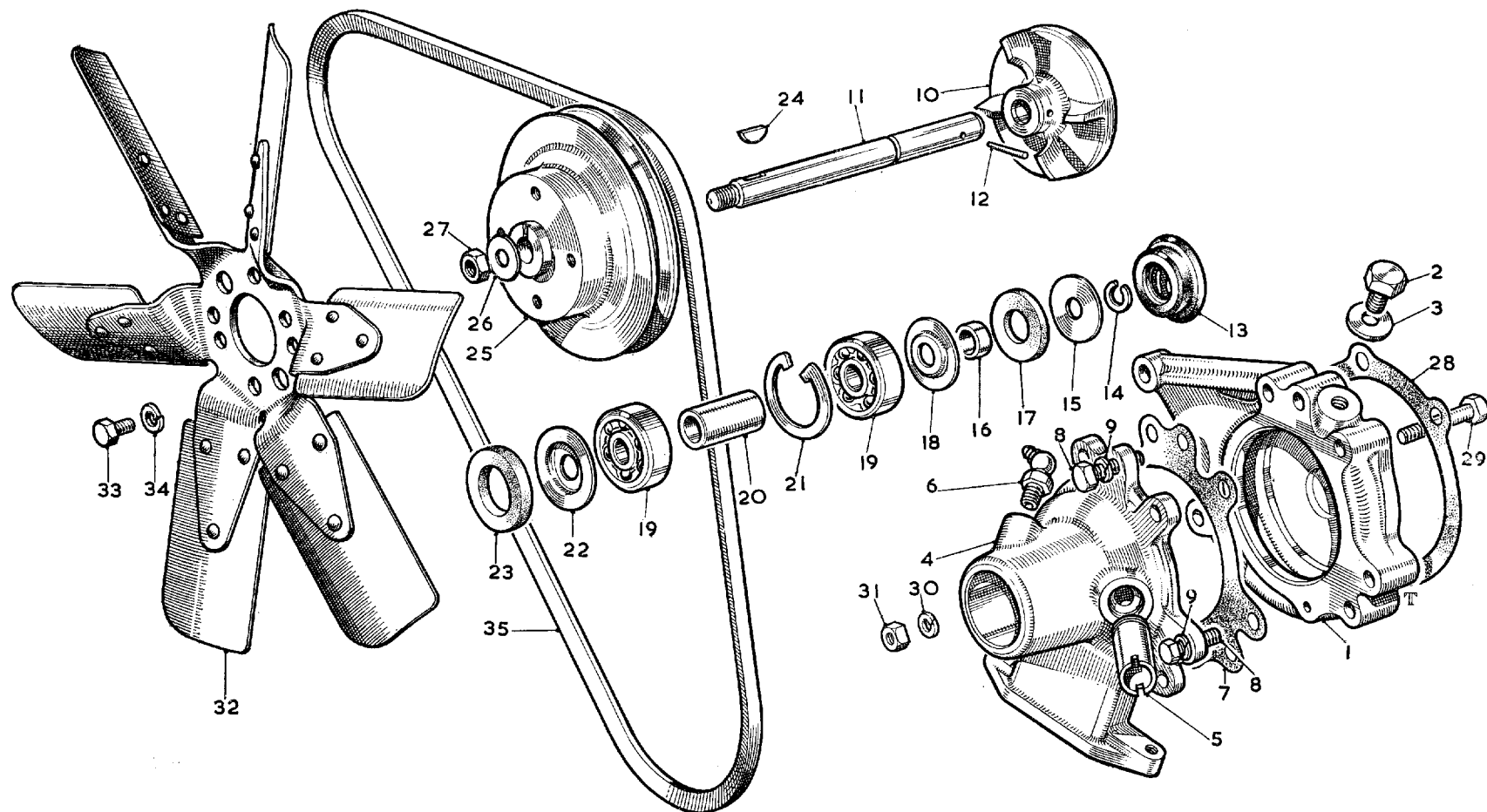


A2687A

**SERVICE PARTS LIST**

**THE M.G. Series MGA TWIN CAM**

Item No.	DESCRIPTION	Commencing (E) 101		Qty. per Vehicle		Unit of Issue	Type of Vehicle	MODIFICATIONS			REMARKS
		Part Number	Illus. No.	RHD	LHD			New Part Number	Change Point	Amdt. No.	
<b>DISTRIBUTOR AND DYNAMO MOUNTINGS</b>											
1	<b>Housing—distributor</b>	<b>AEH496</b>	<b>AH1</b>	<b>1</b>	<b>1</b>						
2	Bush for housing	AEH531	AH2	2	2						
3	Joint for housing	AEH502	AH3	1	1						
4	<b>Shaft and dog assembly—distributor drive</b>	<b>AEH45</b>	<b>AH4</b>	<b>1</b>	<b>1</b>						
5	Pin for dog (taper)	TPS0508	AH5	1	1						
6	<b>Gear—distributor drive</b>	<b>AEH500</b>	<b>AH6</b>	<b>1</b>	<b>1</b>						
7	Pin for gear (taper)	TPS0507	AH7	1	1						
8	Housing—tachometer drive	AEH455	AH8	1	1						
9	Joint for housing	1G2401	AH9	1	1						
10	Screw—distributor locating	ZCS0404	AH10	1	1						
11	Washer for screw	2K6337	AH11	1	1						
12	<b>Pinion—tachometer drive</b>	<b>AEH458</b>	<b>AH12</b>	<b>1</b>	<b>1</b>						
13	Oil seal for pinion	1G2398	AH13	1	1						
14	Ring—seal retaining	1G2399	AH14	1	1						
15	Bolt—dynamo to water pump and inlet manifold	HBZ0514	AH15	2	2						
16	Shim—dynamo to inlet manifold (.003")	AEH622	AH16	A/R	A/R						
17	Washer—distance—dynamo to inlet manifold	AEH530	AH17	A/R	A/R						Alternative to avoid using excessive quantity of shim AEH622
18	Washer for bolt (plain)	PWZ105	AH18	4	4						
19	Nut for bolt	LNZ205	AH19	2	2						
20	<b>Link—dynamo adjusting</b>	<b>AEH503</b>	<b>AH20</b>	<b>1</b>	<b>1</b>			<b>AEH614</b>	<b>Com. (E) 448</b>		<b>Always supply AEH614 prior to (E) 448</b>
21	Screw—link to water inlet pipe	ZCS0507	AH21	1	1						
22	Washer for screw (plain)	PWZ105	AH22	1	1						
23	Washer for screw (spring)	LWZ205	AH23	1	1	24					
24	Screw—link to dynamo	8H2098	AH24	1	1						
25	Washer for screw (spring)	2K5819	AH25	1	1						
26	Set screw—link to dynamo		AH24	1	1			ZCS0509			
27	Washer for set screw		AH25	1	1			2A110			
28	Washer for set screw		AH26	1	1			PWZ205			
29	Nut for set screw		AH27	1	1			51K1712			
30	<b>Pulley for dynamo</b>	<b>AEH504</b>	<b>AH28</b>	<b>1</b>	<b>1</b>			<b>AEH605</b>	<b>Com. (E) 272</b>		<b>Always supply AEH605 with 1 off fan belt AEH621 prior to (E) 272</b>
31	Fan for dynamo	1G1783	AH29	1	1						



A0296A



**SERVICE PARTS LIST**

**THE M.G. Series MGA TWIN CAM**

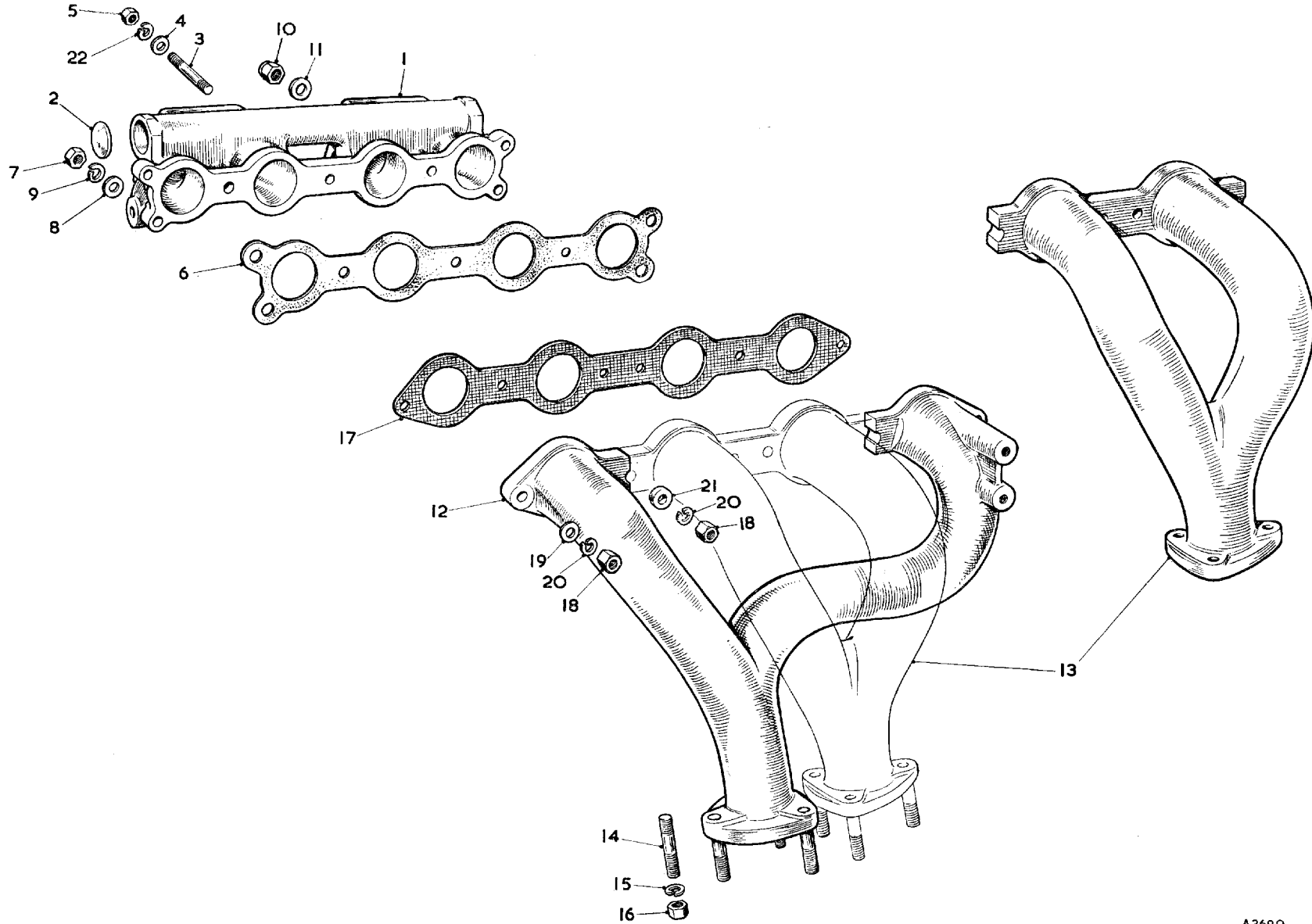
Item No.	DESCRIPTION	Commencing (E) 101		Qty. per Vehicle		Unit of Issue	Type of Vehicle	MODIFICATIONS			REMARKS
		Part Number	Illus. No.	RHD	LHD			New Part Number	Change Point	Amdt. No.	
	<b>FAN BLADE—BELT</b>										
1	Blade assembly—fan	<b>AEG129</b>	<b>AF32</b>	1	1						
2	Screw—blade to pulley	HZS0405	AF33	4	4						
3	Washer for screw (spring)	LWZ204	AF34	4	4	12					
4	Belt for fan	<b>AEH473</b>	<b>AF35</b>	1	1						Always supply AEH621 with 1 off pulley AEH60 prior to (E) 272
	<b>OVERSIZE AND UNDERSIZE SERVICE COMPONENTS</b>										
5	Piston assembly—010" O/S	<b>AEH055410</b>		4	4			<b>AEH061610</b> <b>AEH064010</b> <b>AEH067310</b>	<b>Com. (E) 446</b> <b>Com. (E) 606</b> <b>Com. (E) 2057</b>		For all replacements AEH067310 must be used
6	Piston assembly—020" O/S	AEH055420		4	4			AEH061620 AEH064020 AEH067320	Com. (E) 446 Com. (E) 606 Com. (E) 2057		For all replacements AEH067320 must be used
7	Piston assembly—030" O/S	AEH055430		4	4			AEH061630 AEH064030 AEH067330	Com. (E) 446 Com. (E) 606 Com. (E) 2057		For all replacements AEH067330 must be used
8	Piston assembly—040" O/S	AEH055440		4	4			AEH061640 AEH064040 AEH067340	Com. (E) 446 Com. (E) 606 Com. (E) 2057		For all replacements AEH067340 must be used
9	Ring—compression (chrome)—010" O/S	<b>AEH055610</b>		4	4			<b>AEH064910</b>			
10	Ring—compression (chrome)—020" O/S	AEH055620		4	4			AEH064920	Com. (E) 606		
11	Ring—compression (chrome)—030" O/S	AEH055630		4	4			AEH064930			
12	Ring—compression (chrome)—040" O/S	AEH055640		4	4			AEH064940			
13	Ring—compression (taper)—010" O/S	<b>AEH055710</b>		8	8						
14	Ring—compression (taper)—020" O/S	AEH055720		8	8						
15	Ring—compression (taper)—030" O/S	AEH055730		8	8						
16	Ring—compression (taper)—040" O/S	AEH055740		8	8						
17	Ring—scraper—010" O/S	<b>AEH055810</b>		4	4			<b>AEH061510</b> <b>AEH067210</b>	<b>Com. (E) 446</b> <b>Com. (E) 2057</b>		For all replacements AEH067210 must be used
18	Ring—scraper—020" O/S	AEH055820		4	4			AEH061520 AEH067220	Com. (E) 446 Com. (E) 2057		For all replacements AEH067220 must be used
19	Ring—scraper—030" O/S	AEH055830		4	4			AEH061530 AEH067230	Com. (E) 446 Com. (E) 2057		For all replacements AEH067230 must be used
20	Ring—scraper—040" O/S	AEH055840		4	4			AEH061540 AEH067240	Com. (E) 446 Com. (E) 2057		For all replacements AEH067240 must be used
21	Pin—gudgeon—002" O/S	<b>AEH044102</b>		4	4						
22	Pin—gudgeon—004" O/S	AEH044104		4	4						
23	Pin—gudgeon—006" O/S	AEH044106		4	4						
24	Guide—inlet valve—010" O/S O/D	<b>AEH038610</b>		4	4						
25	Guide—exhaust valve—010" O/S O/D	AEH038710		4	4						
26	Tappet—010" O/S	<b>AEH065110</b>		8	8						
	<b>OIL LEVEL INDICATOR</b>										
27	Indicator—oil level	<b>AEH568</b>		1	1						
28	Washer for indicator (rubber)	AEC671		1	1						
	<b>CYLINDER LINER</b>										
29	Liner for cylinder block	<b>AEH656</b>		4	4						For Service purposes only

**SERVICE PARTS LIST**

**THE M.G. Series MGA TWIN CAM**

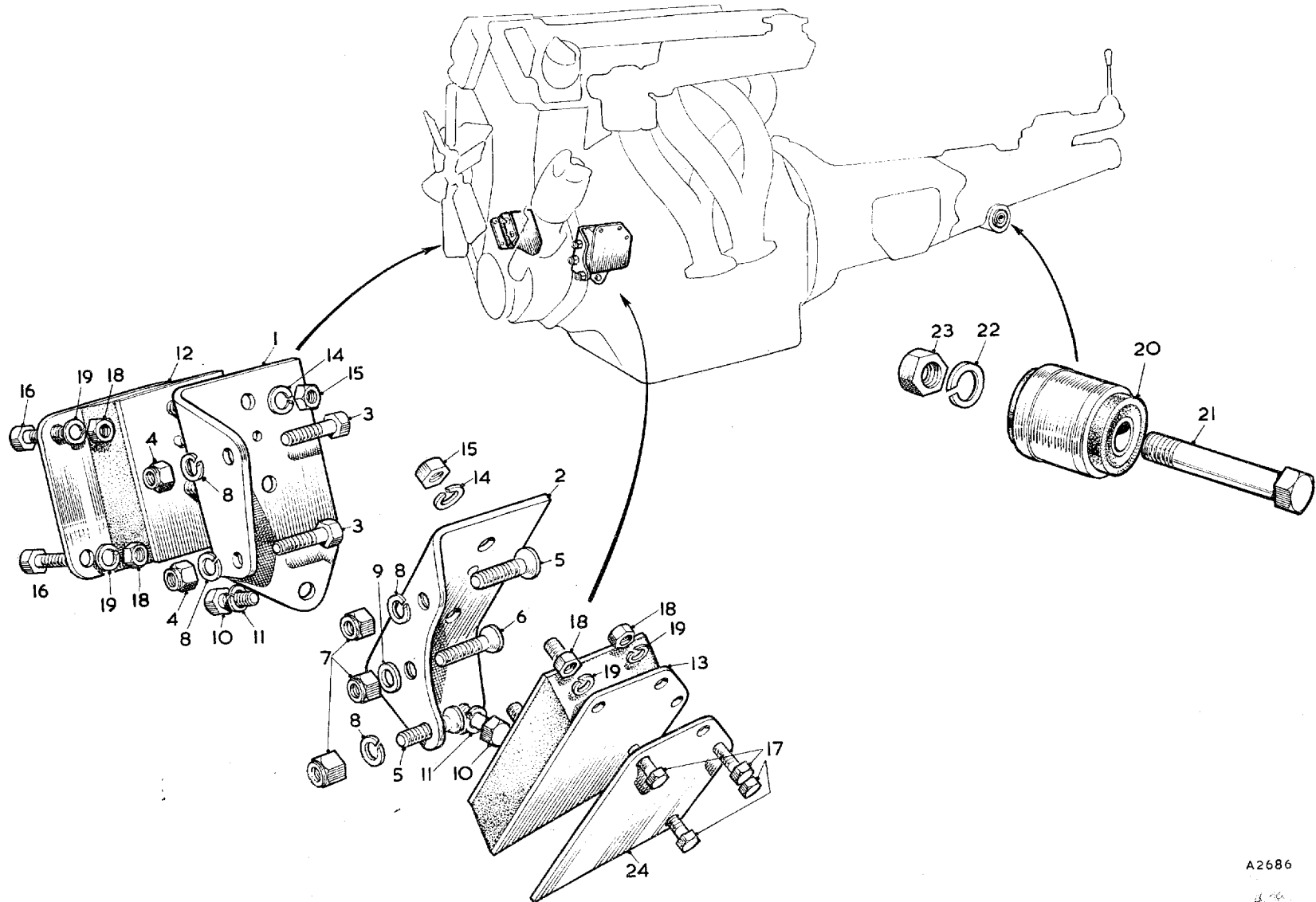
Item No.	DESCRIPTION	Commencing (E) 101		Qty. per Vehicle		Unit of Issue	Type of Vehicle	MODIFICATIONS			REMARKS
		Part Number	Illus. No.	RHD	LHD			New Part Number	Change Point	Amdt. No.	
	<b>ENGINE SERVICE KITS</b>										
1	<b>Joint washer kit for engine decarbonizing</b>	<b>8G2262</b>		1	1						
2	Joint for cylinder head			1	1						
3	Joint for water inlet elbow			1	1						
4	Joint for cylinder head top cover (inlet)			1	1						
5	Joint for cylinder head top cover (exhaust)			1	1						
6	Joint for exhaust manifold			1	1						
7	Joint for inlet manifold			1	1						
8	Joint for carburetter			2	2						
9	<b>Joint washer kit—supplementary</b>	<b>8G2263</b>		1	1						
10	Joint for timing cover			1	1						
11	Joint for cylinder side cover			2	2						
12	Joint for oil sump			1	1						
13	Joint for cylinder blanking plate			1	1						
14	Washer for drain tap			1	1						
15	Joint for thermostat housing cover			1	1						
16	Joint for tachometer housing			1	1						
17	Joint for oil strainer			1	1						
18	Joint for oil pump			1	1						
19	Joint—scroll to water pump body			1	1						
20	Joint for water inlet pipe			1	1						
21	Joint for water pump			1	1						
22	Joint for header tank filler neck			1	1						
23	Joint for distributor drive housing			1	1						
24	Joint for main bearing caps			2	2						
25	Joint for engine rear plate			1	1						
26	Joint for engine front plate			1	1						
27	Joint for oil filter			1	1						
28	Joint for oil feed pillar			1	1						
29	<b>Water pump repair kit</b>	<b>8G2264</b>		1	1						
30	Joint—scroll to body										
31	Washer for scroll plug (fibre)										
32	Seal			1	1						
33	Washer (felt)			1	1						
34	Circlip for bearing			1	1						
35	Washer for spindle (felt)			1	1						
36	Joint—pump to timing case			1	1						
37	Circlip for spindle			1	1						
38	Joint—inlet pipe to water pump			1	1						

**Use together with 8G2262 for engine complete overhaul**



A2690

Item No.	DESCRIPTION	Commencing (E) 101		Qty. per Vehicle		Unit of Issue	Type of Vehicle	MODIFICATIONS			REMARKS
		Part Number	Illus. No.	RHD	LHD			New Part Number	Change Point	Amdt. No.	
	<b>INLET AND EXHAUST MANIFOLDS</b>										
1	<b>Manifold—inlet</b> .....	<b>AEH21</b>	<b>AJ1</b>	<b>1</b>	<b>1</b>						
2	Plug for core hole .....	2K8168	AJ2	2	2						
3	Stud for carburetter .....	CLS2512	AJ3	8	8						
4	Washer for stud (plain) .....	PWZ105	AJ4	8	8						
5	Washer for stud (spring) .....	LWZ205	AJ22	8	8	24					
6	Nut for stud .....	FNZ105	AJ5	8	8						
7	Joint for inlet manifold .....	AEH578	AJ6	1	1						
8	Nut for manifold stud .....	FNZ106	AJ7	5	5						
9	Washer for manifold stud (plain) .....	PWZ106	AJ8	5	5						
10	Washer for manifold stud (spring) .....	LWZ206	AJ9	5	5						
11	Nut for manifold stud (self-locking) .....	LNZ206	AJ10	2	2						
12	Washer for manifold stud (plain) .....	PWZ106	AJ11	2	2						
13	<b>Manifold—exhaust (No. 1 and No. 4 cylinders)</b> .....	<b>AEH30</b>	<b>AJ12</b>	<b>1</b>	<b>1</b>						
14	<b>Manifold—exhaust (No. 2 and No. 3 cylinders)</b> .....	<b>AEH31</b>	<b>AJ13</b>	<b>1</b>	<b>1</b>						
15	Stud for outlet flange .....	AEH194	AJ14	6	6						
16	Washer for stud (spring) .....	LWZ206	AJ15	6	6						
17	Nut for stud .....	AEH195	AJ16	6	6						
18	Joint for exhaust manifold .....	AEH574	AJ17	1	1						
19	Nut for manifold stud .....	BNN105	AJ18	6	6		AHH5171	Com. (E) 256		Always use AHH5171 prior to (E) 256	
20	Washer for manifold stud (plain) .....	PWN105	AJ19	6/4	6/4	12				Quantity reduced at (E) 113	
21	Washer for manifold stud (spring) .....		AJ20	6	6	24	LWZ205	Com. (E) 256		] Use from (E) 101	
22	Washer for manifold stud (between manifolds) .....		AJ21	2	2		AEH603	Com. (E) 113			

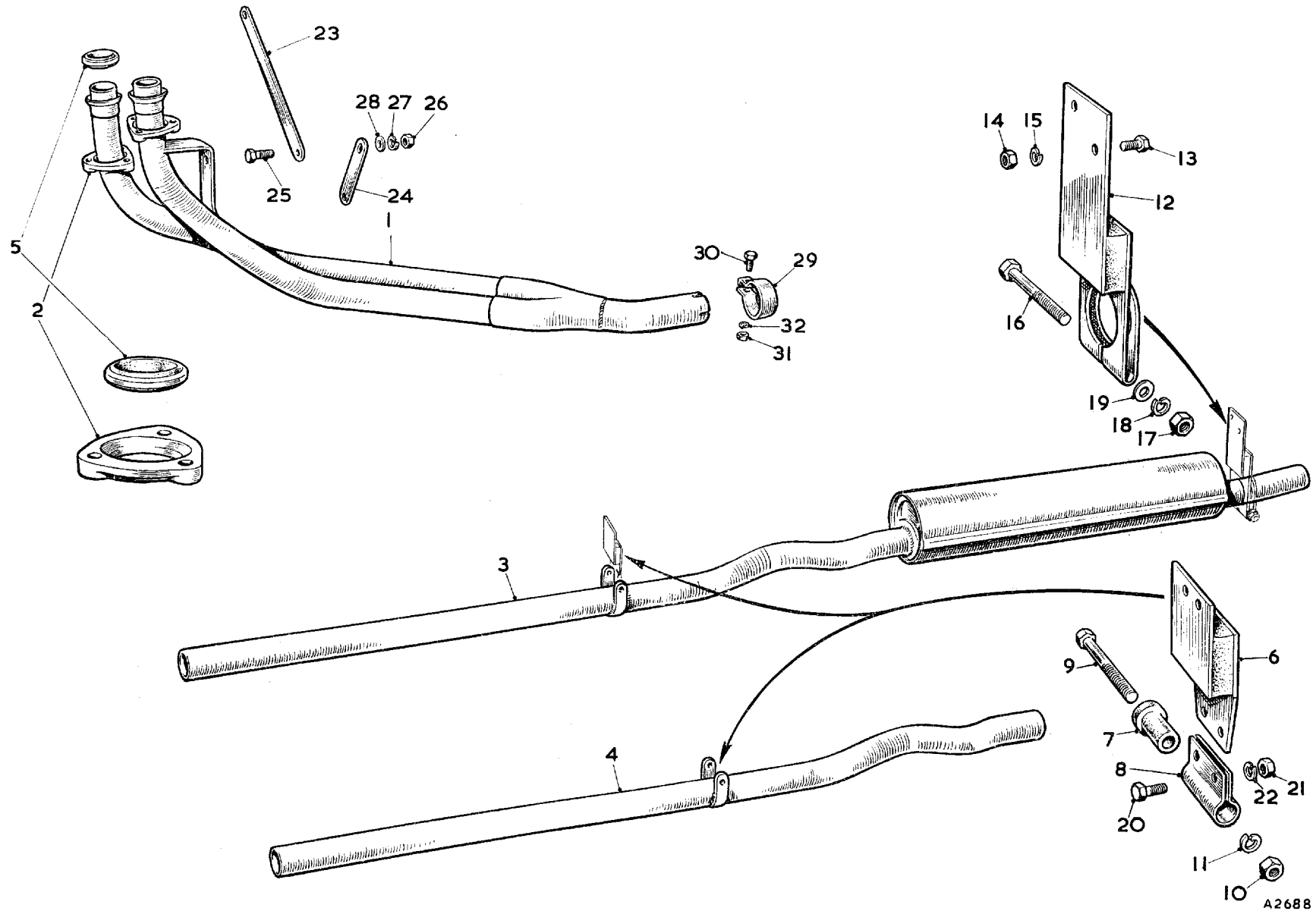


A2686

**SERVICE PARTS LIST**

**THE M.G. Series MGA TWIN CAM**

Item No.	DESCRIPTION	Commencing (C) 501		Qty. per Vehicle		Unit of Issue	Type of Vehicle	MODIFICATIONS			REMARKS
		Part Number	Illus. No.	RHD	LHD			New Part Number	Change Point	Amdt. No.	
	<b>ENGINE MOUNTING</b>										
1	Bracket—front engine mounting—R.H.	<b>AHH5065</b>	<b>AK1</b>	1	1						
2	Bracket—front engine mounting—L.H.	<b>AHH5703</b>	<b>AK2</b>	1	1						
3	Screw—bracket to mounting plate—R.H.	HZS0508	AK3	2	2						
4	Nut for screw	LNZ105	AK4	2	2						
5	Screw—bracket to mounting plate—L.H.	CMZ0516	AK5	2	2						
6	Screw—bracket to mounting plate—L.H.	CMZ0520	AK6	1	1						
7	Nut for screw	LNZ105	AK7	3	3						
8	Washer for screw (spring)	LWZ205	AK8	4	4	24					
9	Washer for L.H. screw (plain)	PWZ105	AK9	1	1						
10	Screw—bracket to block	HZS0606	AK10	2	2						
11	Washer for screw (spring)	LWZ206	AK11	2	2						
12	Rubber—front engine mounting—R.H.	<b>AHH5833</b>	<b>AK12</b>	1	1						
13	Rubber—front engine mounting—L.H.	<b>AHH5832</b>	<b>AK13</b>	1	1						
14	Washer—engine mounting to bracket (spring)	LWZ205	AK14	4	4	24					
15	Nut—engine mounting to bracket	FNZ105	AK15	4	4						
16	Screw—mounting rubber to bracket—R.H.	HZS0505	AK16	4	4						
17	Screw—mounting rubber to bracket—L.H.	HZS0506	AK17	4	4						
18	Nut for screw	FNZ105	AK18	8	8						
19	Washer for screw (spring)	LWZ205	AK19	8	8	24					
20	Flexible bush—rear engine mounting	<b>AHH5031</b>	<b>AK20</b>	1	1						
21	Bolt for flexible bush	HBZ0826	AK21	1	1						
22	Washer for bolt	LWZ208	AK22	1	1						
23	Nut for bolt	LNZ108	AK23	1	1						
24	Plate—packing—L.H.	<b>AHH5896</b>	<b>AK24</b>	1	1						

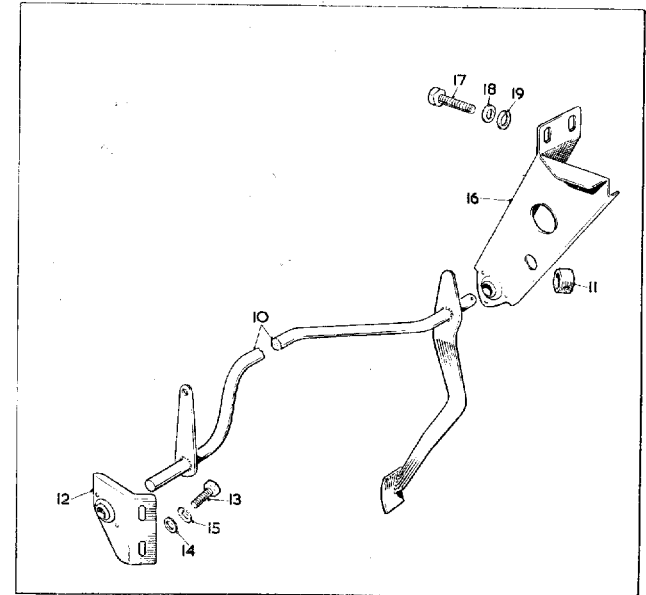
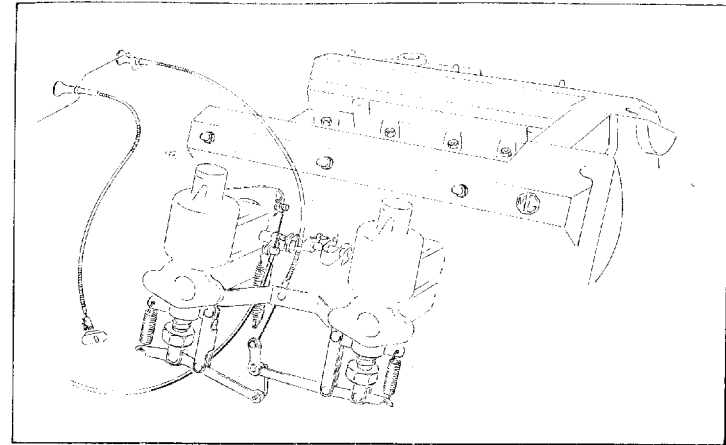
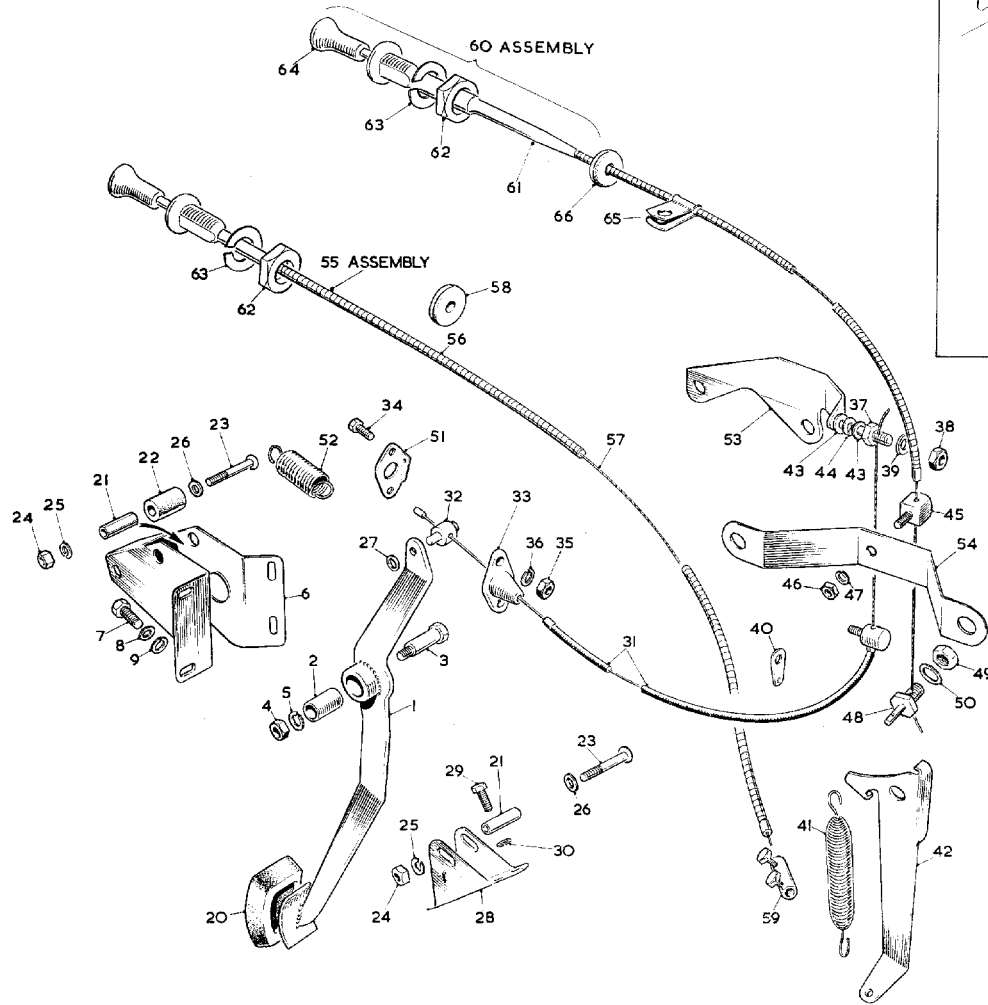


**SERVICE PARTS LIST**

**THE M.G. Series MGA TWIN CAM**

Item No.	DESCRIPTION	Commencing (C) 501		Qty. per Vehicle		Unit of Issue	Type of Vehicle	MODIFICATIONS			REMARKS
		Part Number	Illus. No.	RHD	LHD			New Part Number	Change Point	Amdt. No.	
<b>EXHAUST SYSTEM</b>											
1	Exhaust pipe assembly	ARH103	AL1	1	1						
2	Flange	AHH5145	AL2	2	2						
3	Intermediate pipe and silencer assembly	ARH104	AL3	1	1						
4	Intermediate pipe assembly	ARH1229	AL4	1	1						
5	Packing—exhaust pipe	AHH5146	AL5	2	2						
6	Mounting—exhaust—intermediate	AHH5402	AL6	1	1						
7	Bush—intermediate exhaust mounting	AHH5403	AL7	2	2						
8	Housing—intermediate exhaust mounting	AHH5404	AL8	1	1						
9	Bolt—bush and housing to pipe	HBZ0522	AL9	1	1						
10	Nut for bolt	FNZ105	AL10	1	1						
11	Washer for bolt (spring)	LWZ205	AL11	1	1	24					
12	Mounting—exhaust (rear)	AHH5819	AL12	1	1						
13	Screw—mountings to frame	HZS0404	AL13	4	4						
14	Nut for screw	FNZ104	AL14	4	4						
15	Washer for screw (spring)	LWZ204	AL15	4	4	12					
16	Bolt—rear mounting and tail pipe	HBZ0422	AL16	1	1						
17	Nut for bolt	FNZ104	AL17	1	1						
18	Washer for bolt (spring)	LWZ204	AL18	1	1						
19	Washer for bolt (plain)	PWZ104	AL19	2	2						
20	Screw—housing to intermediate mounting	HZS0404	AL20	2	2						
21	Nut for screw	FNZ104	AL21	2	2						
22	Washer for screw (spring)	LWZ204	AL22	2	2	12					
23	Strap—upper front mounting	AHH5406	AL23	1	1						
24	Strap—lower front mounting	AHH5407	AL24	1	1						
25	Screw—strap to front pipe	HZS0505	AL25	1	1						
26	Nut for screw	FNZ105	AL26	1	1						
27	Washer for screw (spring)	LWZ205	AL27	1	1	24					
28	Washer for screw (plain)	PWZ105	AL28	1	1						
29	Clip for connecting pipe	AHH5818	AL29	1	1						
30	Screw for clip	HZS0508	AL30	1	1						
31	Nut for screw	FNZ105	AL31	1	1						
32	Washer for screw (spring)	LWZ205	AL32	1	1	24					





A2696

**SERVICE PARTS LIST**

**THE M.G. Series MGA TWIN CAM**

Item No.	DESCRIPTION	Commencing (C) 501		Qty. per Vehicle		Unit of Issue	Type of Vehicle	MODIFICATIONS			REMARKS
		Part Number	Illus. No.	RHD	LHD			New Part Number	Change Point	Amdt. No.	
	<b>ENGINE CONTROLS</b>										
1	<b>Pedal assembly—accelerator</b>	<b>AHH5300</b>	<b>AM1</b>	<b>1</b>							
2	Bush	AHH5801	AM2	1							
3	Fulcrum pin—accelerator pedal	AHH5306	AM3	1							
4	Nut for fulcrum pin	FNZ105	AM4	1							
5	Washer for fulcrum pin (spring)	LWZ205	AM5	1		24					
6	<b>Bracket—accelerator pedal mounting</b>	<b>AHH5302</b>	<b>AM6</b>	<b>1</b>							
7	Screw—bracket to goalpost inner upright	HPZ0405	AM7	4							
8	Washer for screw (plain)	PWZ104	AM8	4		12					
9	Washer for screw (spring)	LWZ204	AM9	4		12					
10	<b>Pedal and cross-shaft assembly—accelerator</b>	<b>AHH5727</b>	<b>AM10</b>	<b>1</b>							
11	Locating collar—accelerator cross-shaft	AHH5814	AM11	1							
12	<b>Bracket assembly—accelerator cross-shaft—R.H.</b>	<b>AHH5320</b>	<b>AM12</b>	<b>1</b>							
13	Screw—bracket to goalpost—R.H.	HPZ0405	AM13	2							
14	Washer for screw (plain)	PWZ104	AM14	2		12					
15	Washer for screw (spring)	LWZ204	AM15	2		12					
16	<b>Bracket assembly—accelerator cross-shaft—L.H.</b>	<b>AHH5321</b>	<b>AM16</b>	<b>1</b>							
17	Screw—bracket to goalpost—L.H.	HZS0405	AM17	3							
18	Washer for screw (plain)	PWZ104	AM18	3		12					
19	Washer for screw (spring)	LWZ204	AM19	3		12					
20	Pad—pedal (rubber)	ACA5821	AM20	1	1	12					
21	Tube—distance	AHH5803	AM21	2	2						
22	Stop—accelerator pedal	AHH5304	AM22	1	1						
23	Screw—distance tube and adjustable stop	PMZ0422	AM23	2	2						
24	Nut for screw	FNZ104	AM24	2	2						
25	Washer for screw (spring)	LWZ204	AM25	2	2	12					
26	Washer for screw (plain)	PWZ104	AM26	2	2	12					
27	Washer—cable to pedal (plain)	AJD7042	AM27	1	1						
28	Adjustable stop—accelerator pedal	AHH5380	AM28	1	1						
29	Screw for adjustable stop	HPZ0405	AM29	2	2						
30	Washer for screw (spring)	LWZ204	AM30	2	2	12					
31	<b>Cable—accelerator</b>	<b>AHH5830</b>	<b>AM31</b>	<b>1</b>	<b>1</b>						
32	Pin—cable anchor	AHH5626	AM32	1	1						
33	Guide—cable	AHH5308	AM33	1	1						
34	Screw—guide to toeboard plate	PMZ0808	AM34	2	2						
35	Nut for screw	FNZ103	AM35	2	2						
36	Washer for screw (spring)	LWZ203	AM36	2	2						
37	Clamp—accelerator cable	AHH5809	AM37	1	1						
38	Nut—cable to clamp	FNZ104	AM38	1	1						
39	Washer—cable to clamp (plain)	PWZ104	AM39	1	1	12					
40	<b>Bracket—accelerator return spring</b>	<b>84180</b>	<b>AM40</b>	<b>1</b>	<b>1</b>						

**SERVICE PARTS LIST**

**THE M.G. Series MGA TWIN CAM**

Item No.	DESCRIPTION	Commencing (C) 501		Qty. per Vehicle		Unit of Issue	Type of Vehicle	MODIFICATIONS			REMARKS
		Part Number	Illus. No.	RHD	LHD			New Part Number	Change Point	Amdt. No.	
	<b>Engine Controls—continued</b>										
1	Spring—accelerator return	AHH5621	AM41	1	1						
2	<b>Bracket—accelerator return spring anchor</b>	<b>AHH5829</b>	<b>AM42</b>	1	1						
3	Washer—cable to bracket (plain)	AJD7042	AM43	2	2						
4	Washer—cable to bracket (spring)	AJD7711	AM44	1	1						
5	Abutment—choke control	ACH5112	AM45	1	1						
6	Nut for abutment	FNZ103	AM46	1	1						
7	Washer for abutment (spring)	LWZ203	AM47	1	1						
8	Clamp—choke control cable	AHH5309	AM48	1	1						
9	Nut—cable to clamp	FNZ104	AM49	1	1						
10	Washer—cable to clamp (plain)	PWZ104	AM50	1	1	12					
11	<b>Bracket—pull-off spring anchor</b>	<b>AHH5623</b>	<b>AM51</b>	1	1						
12	Spring—pull-off	AHH5624	AM52	1	1						
13	Bracket—accelerator abutment	AHH5827	AM53	1	1						
14	Bracket—choke cable abutment	AHH5828	AM54	1	1						

**SERVICE PARTS LIST**

**THE M.G. Series MGA TWIN CAM**

Item No.	DESCRIPTION	Commencing (C) 501		Qty. per Vehicle		Unit of Issue	Type of Vehicle	MODIFICATIONS			REMARKS
		Part Number	Illus. No.	RHD	LHD			New Part Number	Change Point	Amdt. No.	
	<b>STARTER CONTROL</b>										
1	Cable assembly—starter control	AHH5327	AM55	1							
2	Cable (outer)	AHH5328	AM56	1							
3	Cable (inner)	AHH5329	AM57	1							
4	Grommet—dash	RFR103	AM58	1	1						
5	Cable assembly—starter control	AHH5330			1						
6	Cable (outer)	AHH5331			1						
7	Cable (inner)	AHH5332			1						
8	Coupling—starter pull connector	3H950	AM59	1	1						
	<b>CHOKE CONTROL</b>										
9	Cable assembly—choke control	BHA4084	AM60	1							
10	Body tube and cable assembly	47H5173	AM61	1							
11	Nut—body fixing	17H5286	AM62	1							
12	Washer for nut	AKH456	AM63	1							
13	Knob and wire assembly	47H5172	AM64	1							
14	Cable assembly—choke control	BHA4085			1						
15	Body tube and cable assembly	47H5175			1						
16	Nut—body fixing	17H5286			1						
17	Washer for nut	AKH456			1						
18	Knob and wire assembly	47H5174			1						
19	Clip fixing cable	PCR0311	AM65	1	1						
20	Grommet for dash	RFR103	AM66	1	1						