

CONFIDENTIAL

MG/227

SERVICE MEMORANDUM

1 August 1958

FULL-FLOW OIL FILTER

MAGNETTE

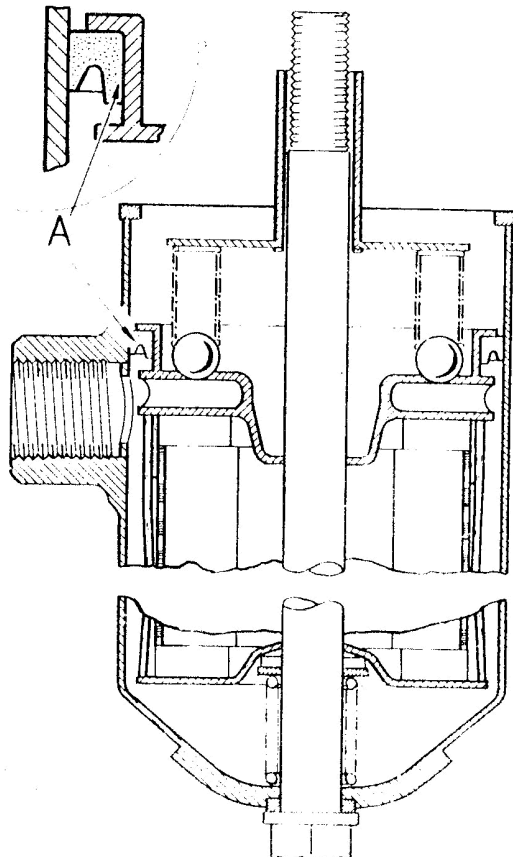
MGA

Prior to:

Engine Nos. 6976 (Magnette)
7101 (Magnette Manumatic)
26661 * (MGA)
* less 26701 to 26933

care must be exercised when re-assembling the container and relief valve after washing or changing the filter element.

The correct fitting of the rubber sealing ring 'A' in the full-flow oil filter is most important, as carelessness can damage the seal and cause loss of oil pressure.



The seal used (Part No. 17H847) is moulded, as shown on left, and this replaces the 'O'-sectioned packing ring without change in part number.

Should the original packing ring be replaced by the moulded type, this must be fitted into the groove of the valve body as shown in the illustration.