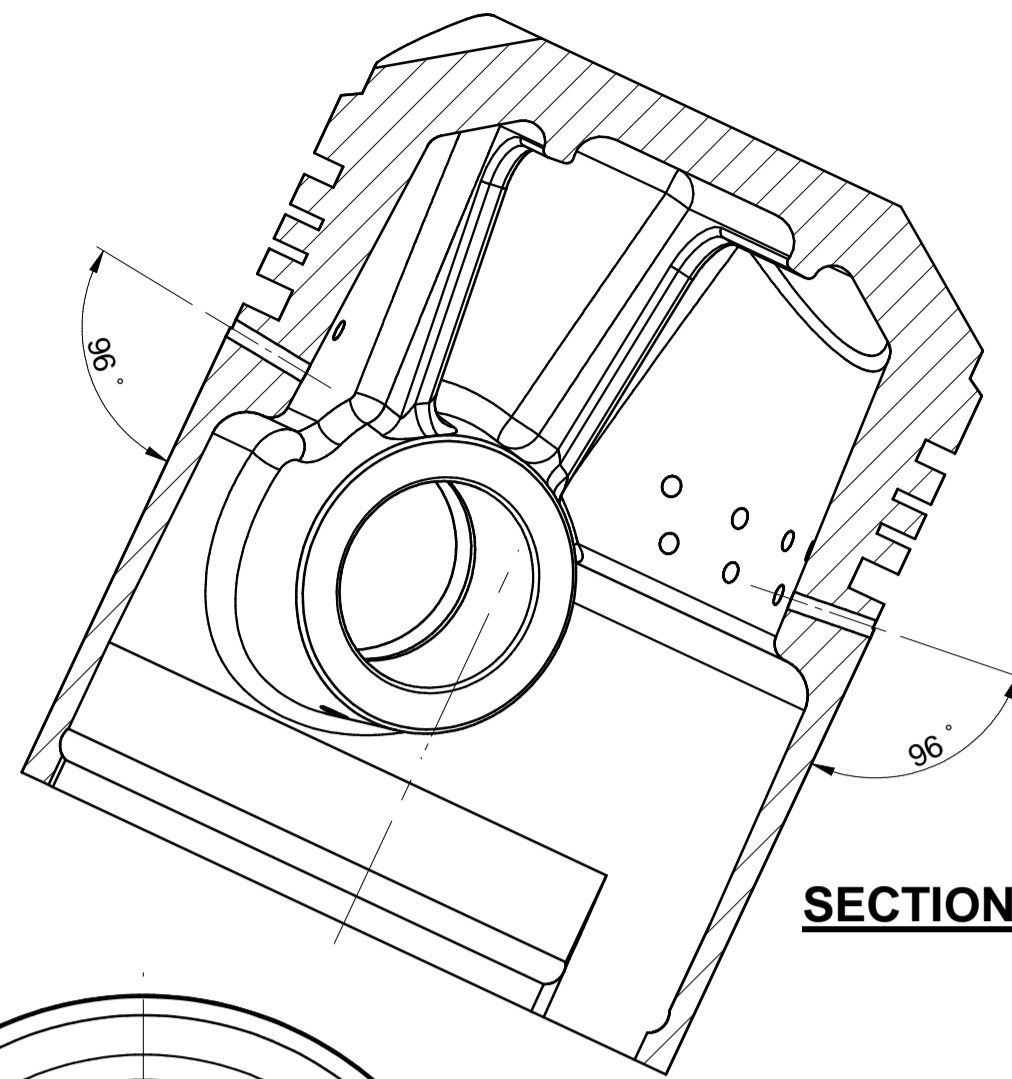
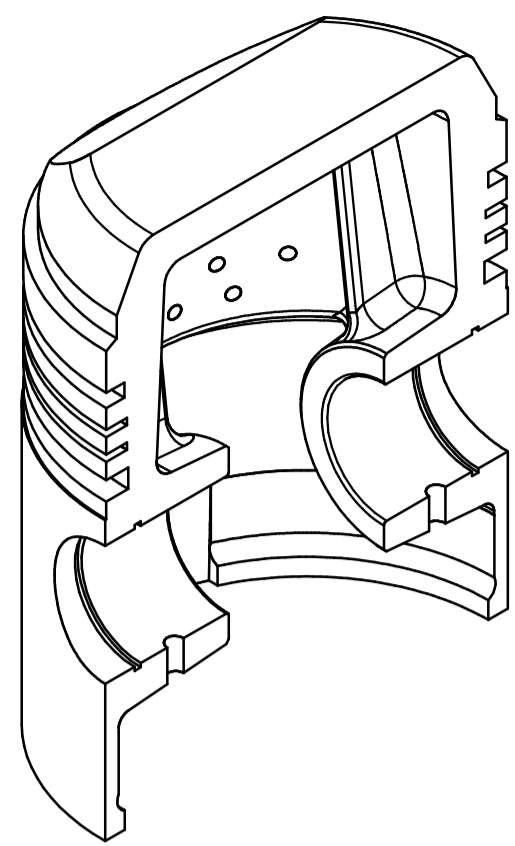
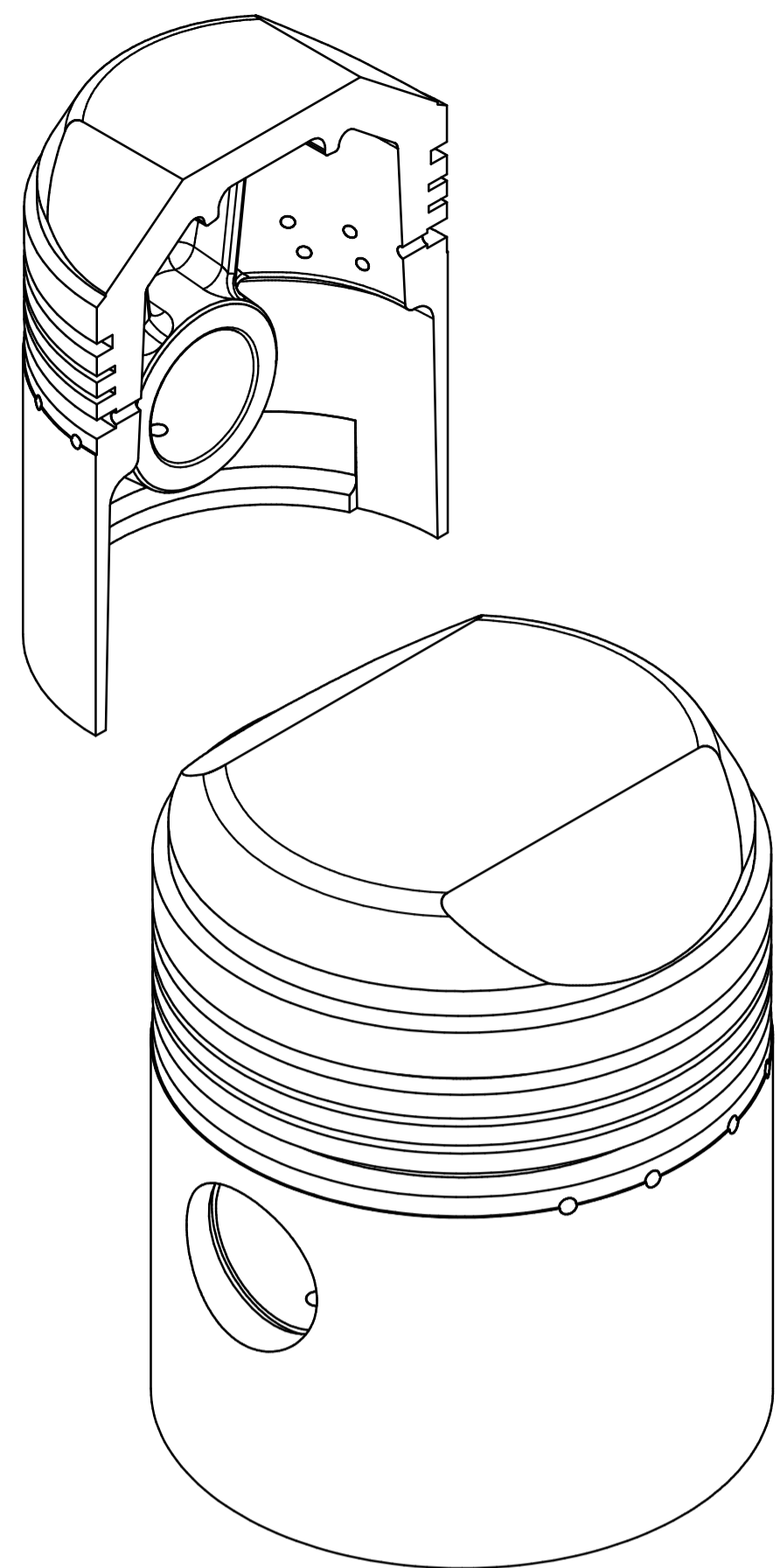
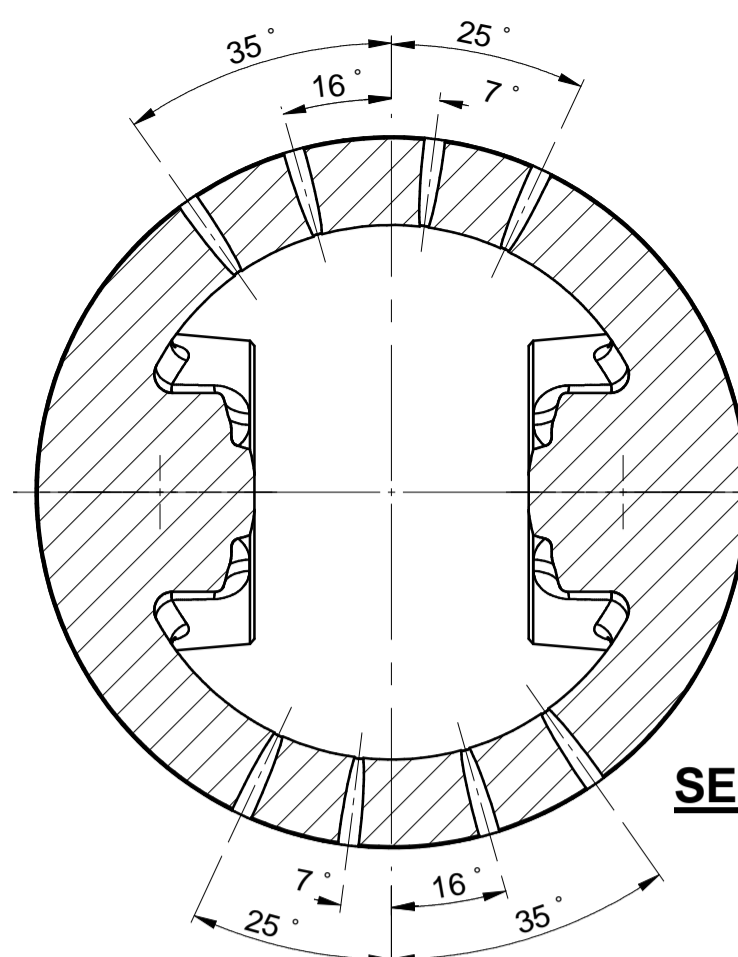
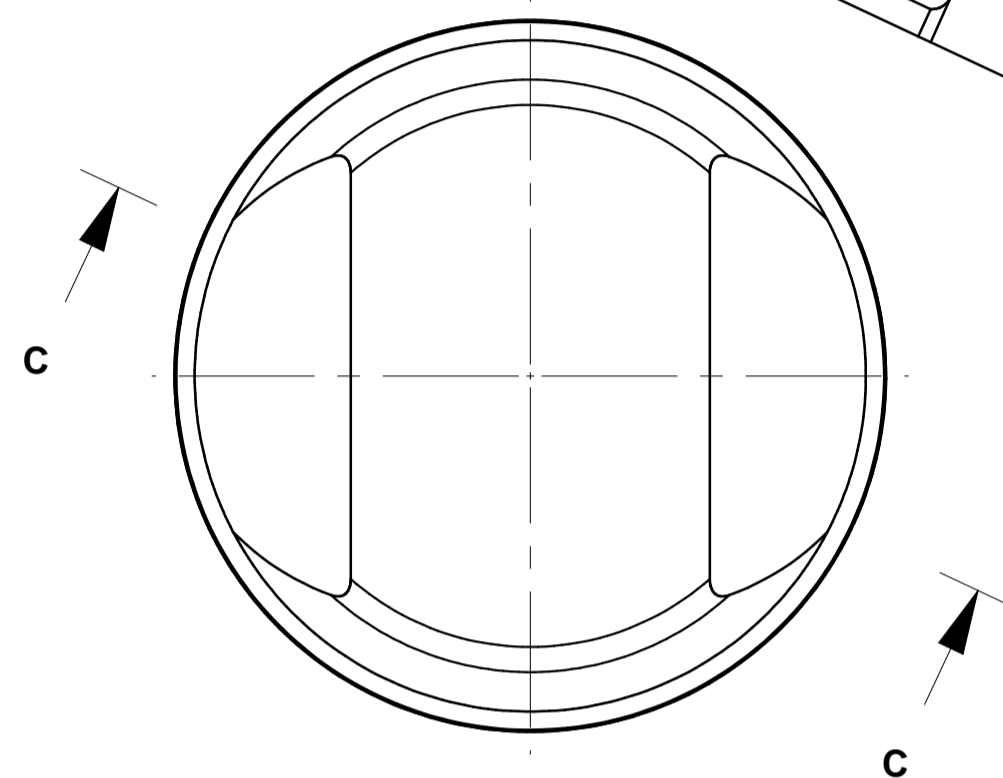


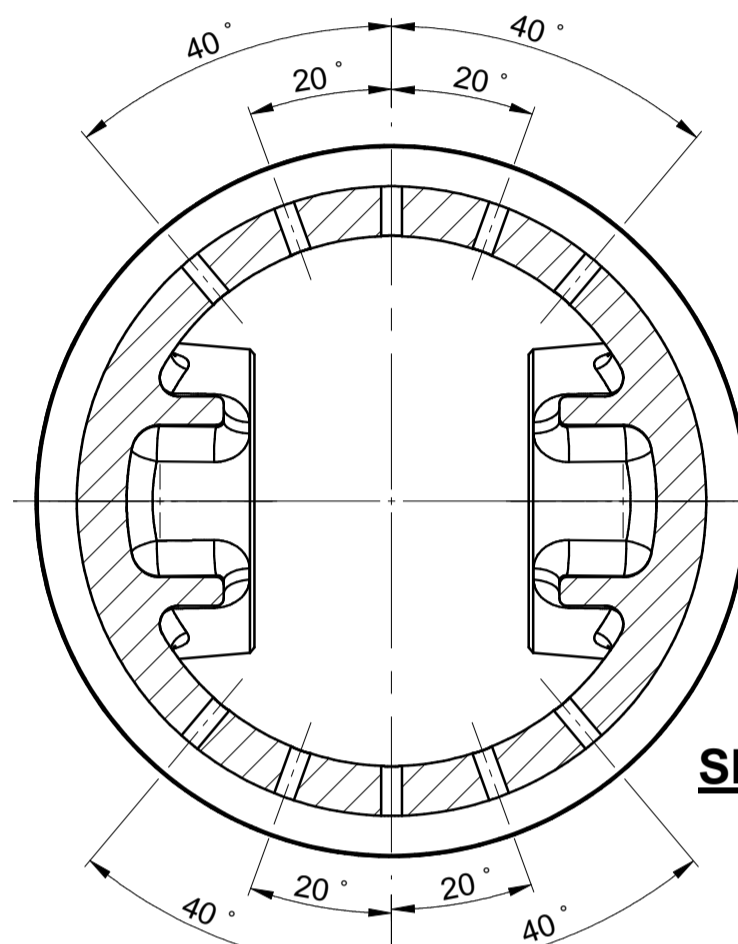
DWG No. **MGA-P-01**



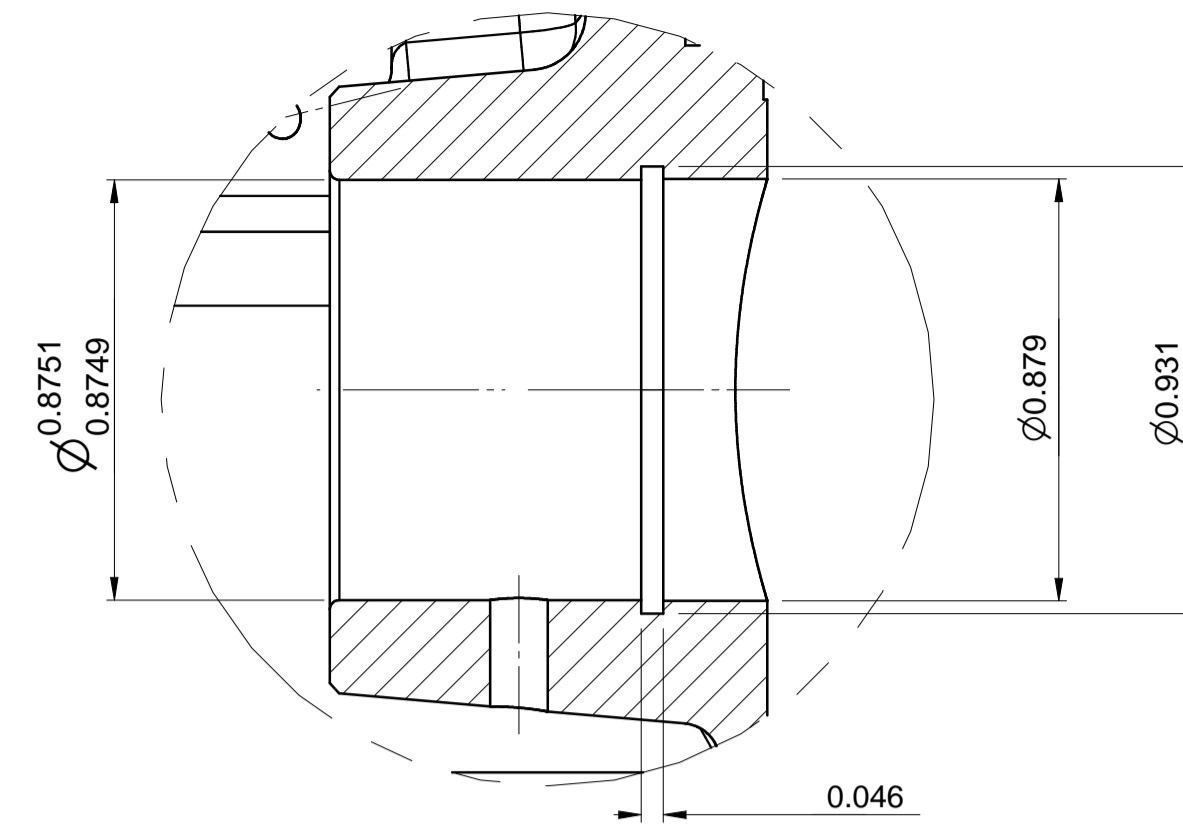
SECTION C-C



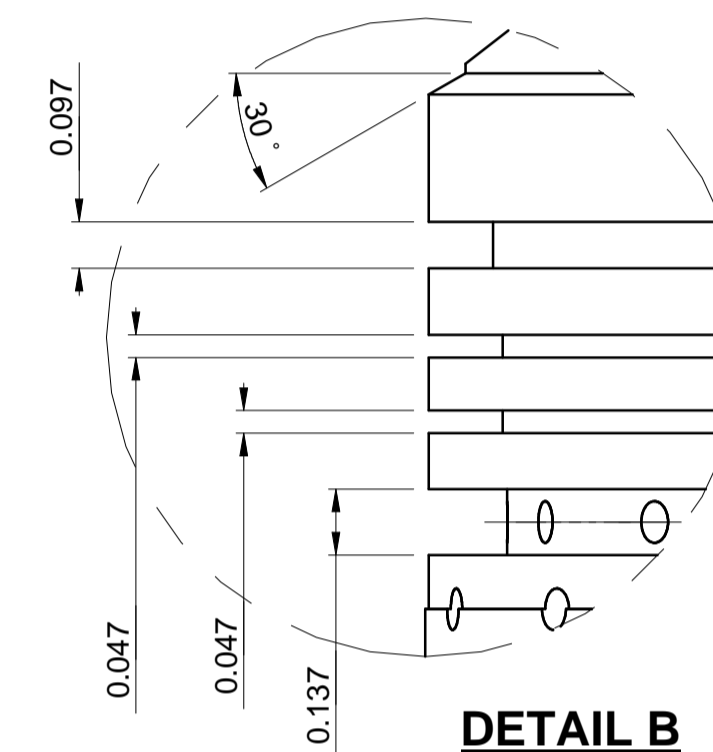
SECTION E-E



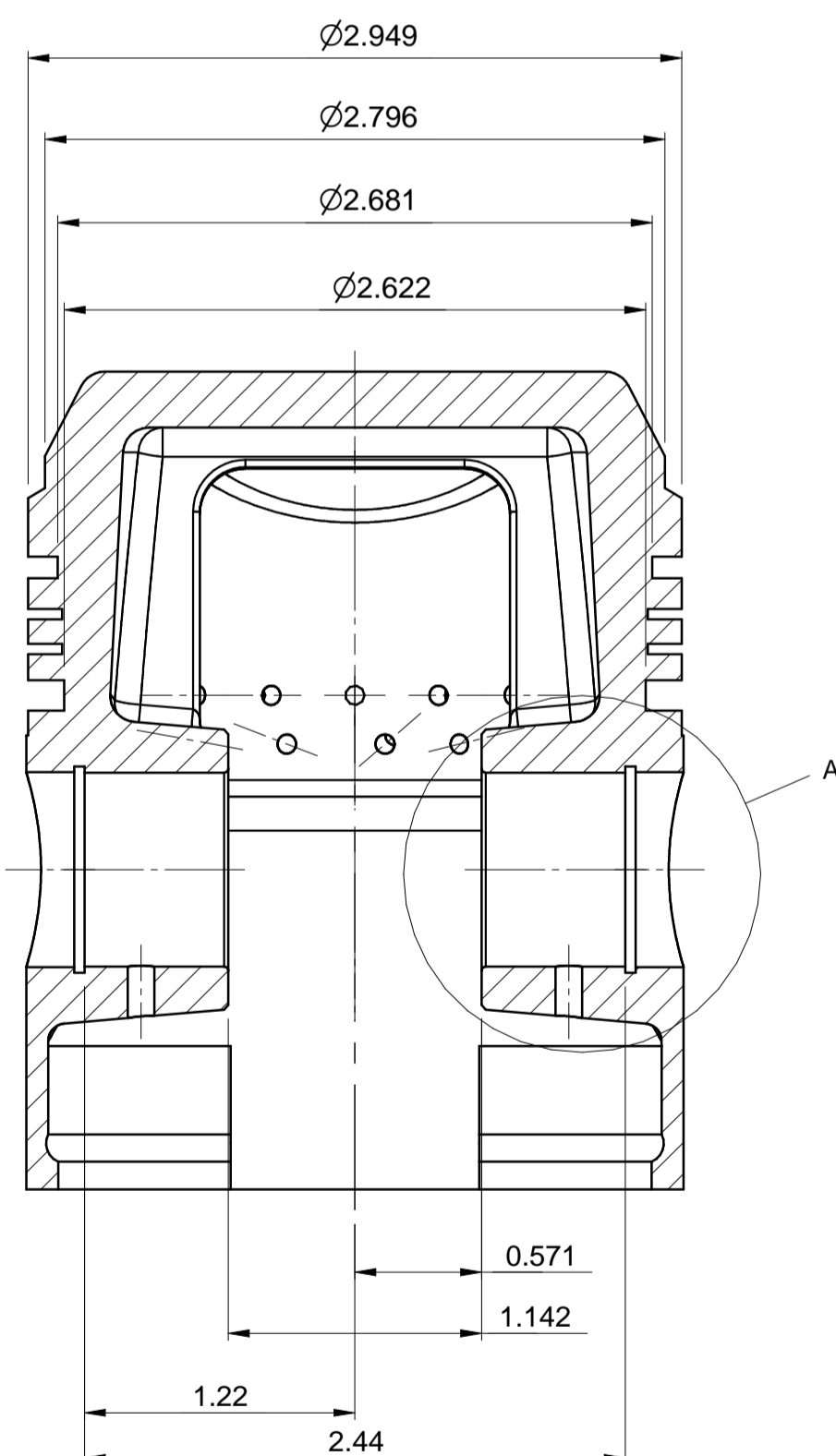
SECTION D-D



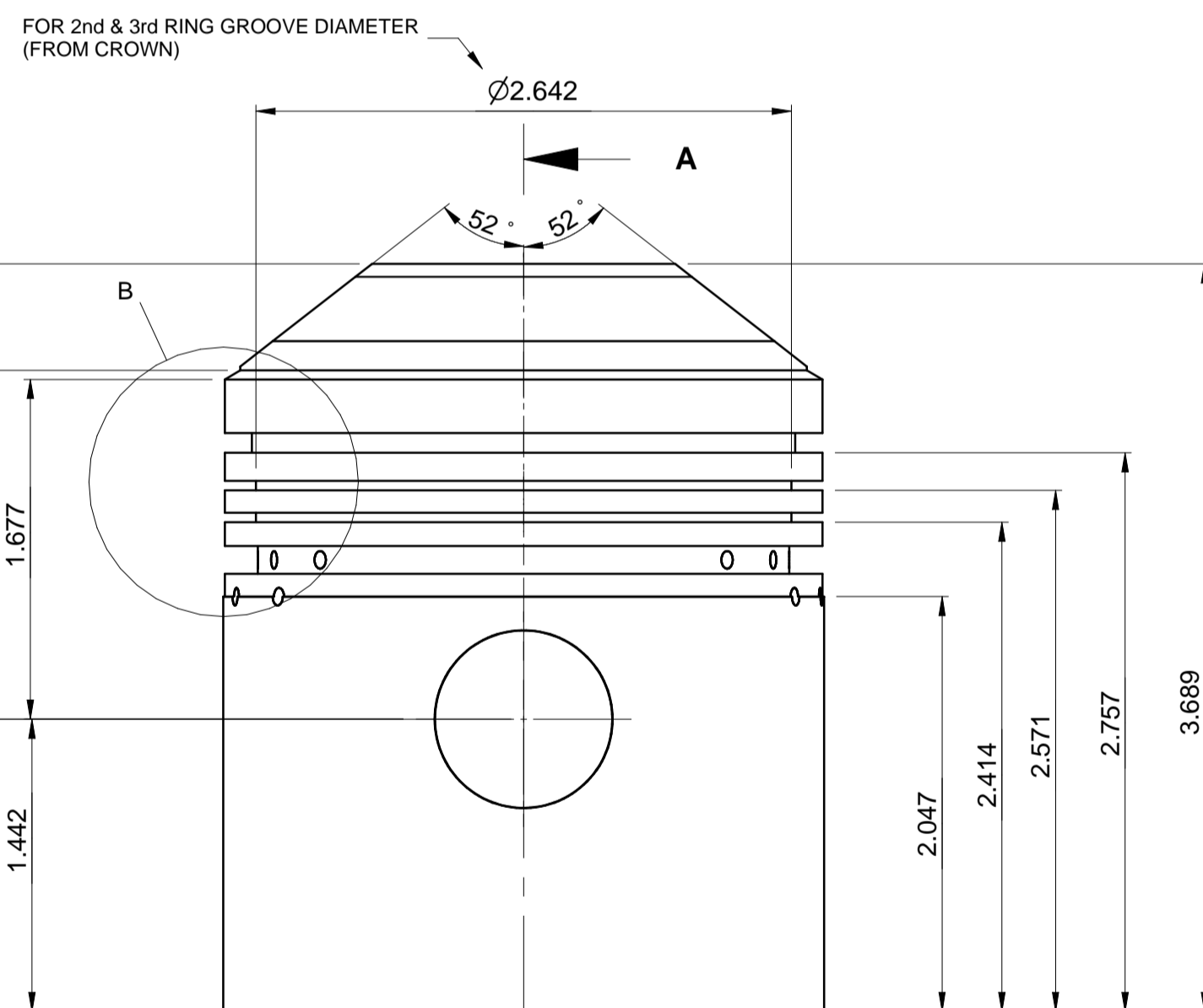
DETAIL A (FOR BOTH BORES)



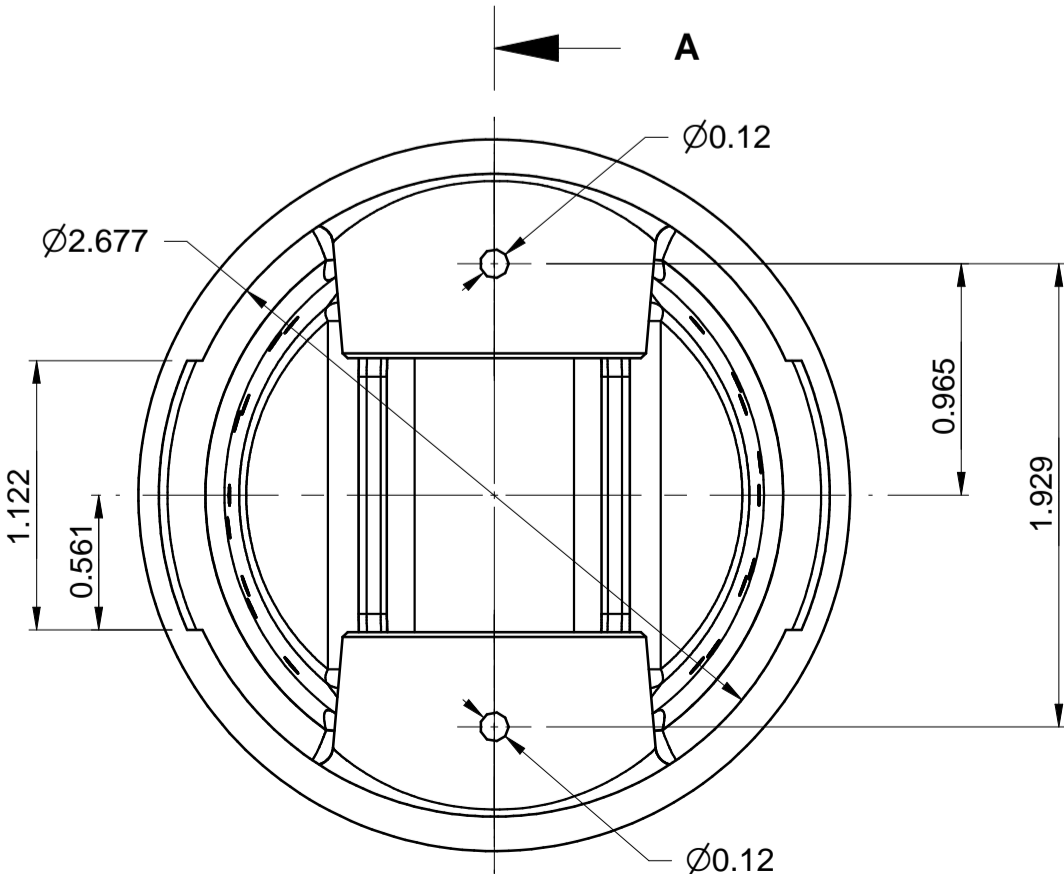
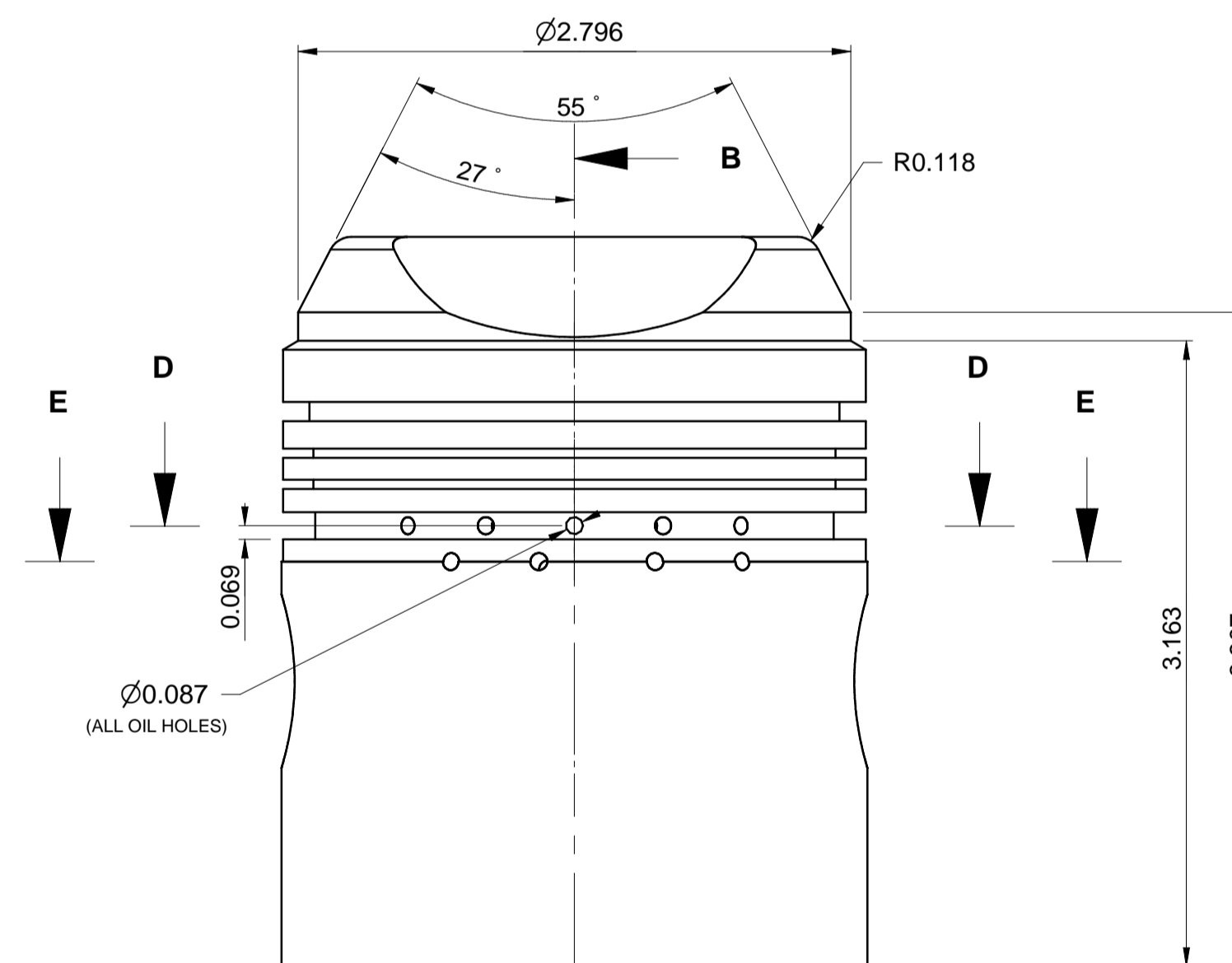
DETAIL B



SECTION A-A



SECTION B-B



NOTES

THIS DRAWING DOCUMENTS EXISTING GEOMETRY/DIMENSIONS OF THE PISTON FOR THE MGA TWIN CAM 9.9 CR. IT DOES NOT DETAIL ANY MANUFACTURING TOLERANCES OF EITHER DIMENSIONS OR GEOMETRIC FEATURES OF THE PISTON. (EXCEPT GUDGEON PIN BORE - IGNORE TOLERANCE & SURFACE FINISH INFORMATION AS SHOWN IN TITLE BLOCK)

REFER TO STEP FILE - *MG-P-1.STP* FOR GEOMETRY/DETAIL OF PISTON CASTING

MATERIAL - TO BE DETERMINED BY MANUFACTURER

FOR SKIRT DIAMETER DETAIL REFER TO DRAWING NUMBER - *MGA-P-02*

PISTON VOLUME - 141636.5 CUBIC MM

TOLERANCES & FINISH

$\pm 0.5\text{mm}$
 $\pm 0.25^\circ$
UNLESS STATED

1.6
UNLESS STATED

DRAWN 23/07/2010

Chris Halliday

CHECKED

PASSED

APPROVED

Engineering Graphics & Design

WEBSITE - www.engd.com.au
EMAIL - info@engd.com.au

PROJECT
MGA TWIN CAM 9.9 CR

FILE NAME
MG-P-1

DWG No.
MGA-P-01

A1 SHEET OF SHEETS

DWG/TOL STD
AS1100

TITLE
DOCUMENTATION OF ORIGINAL GEOMETRY OF PISTON FOR THE MGA TWIN CAM 9.9 CR

REV	DRAWN	DATE	DESCRIPTION	VERT ZONE	HORIZ ZONE
1	CMH	23/07/2010			

1	2	3	4	5	6	7	8	9	10	11	12
---	---	---	---	---	---	---	---	---	----	----	----